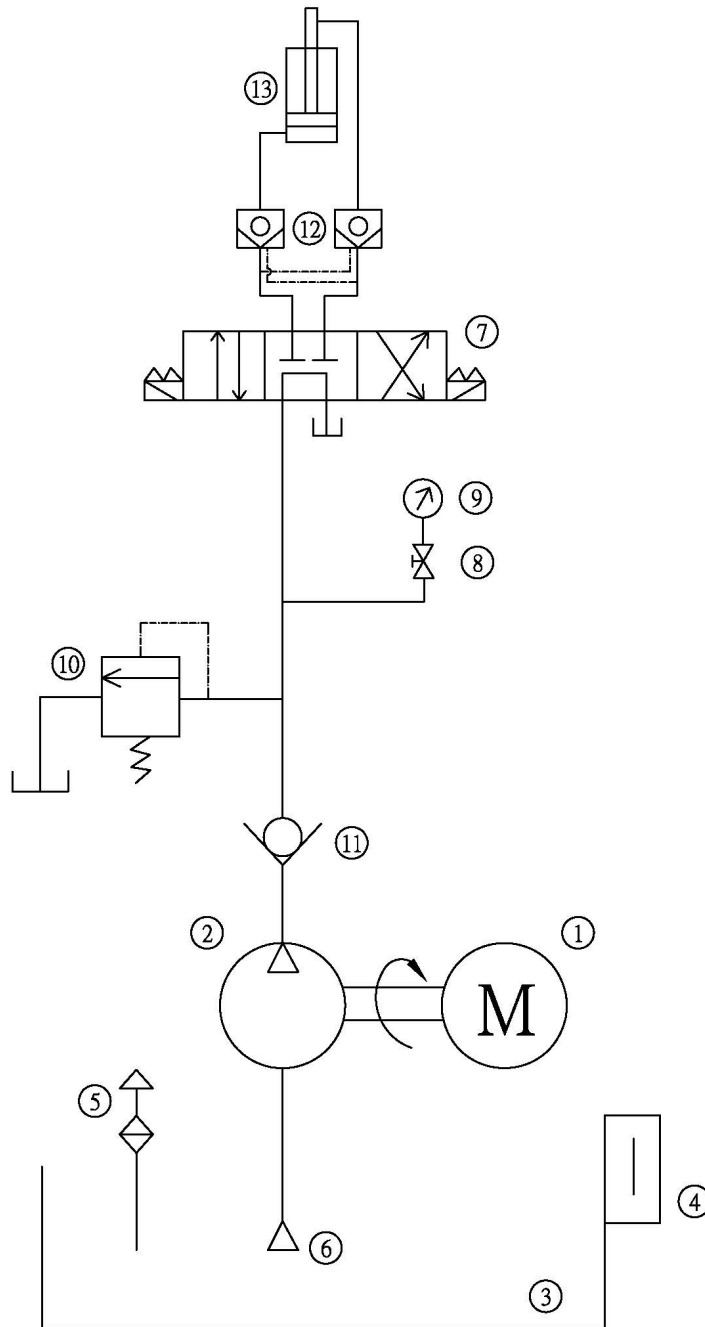


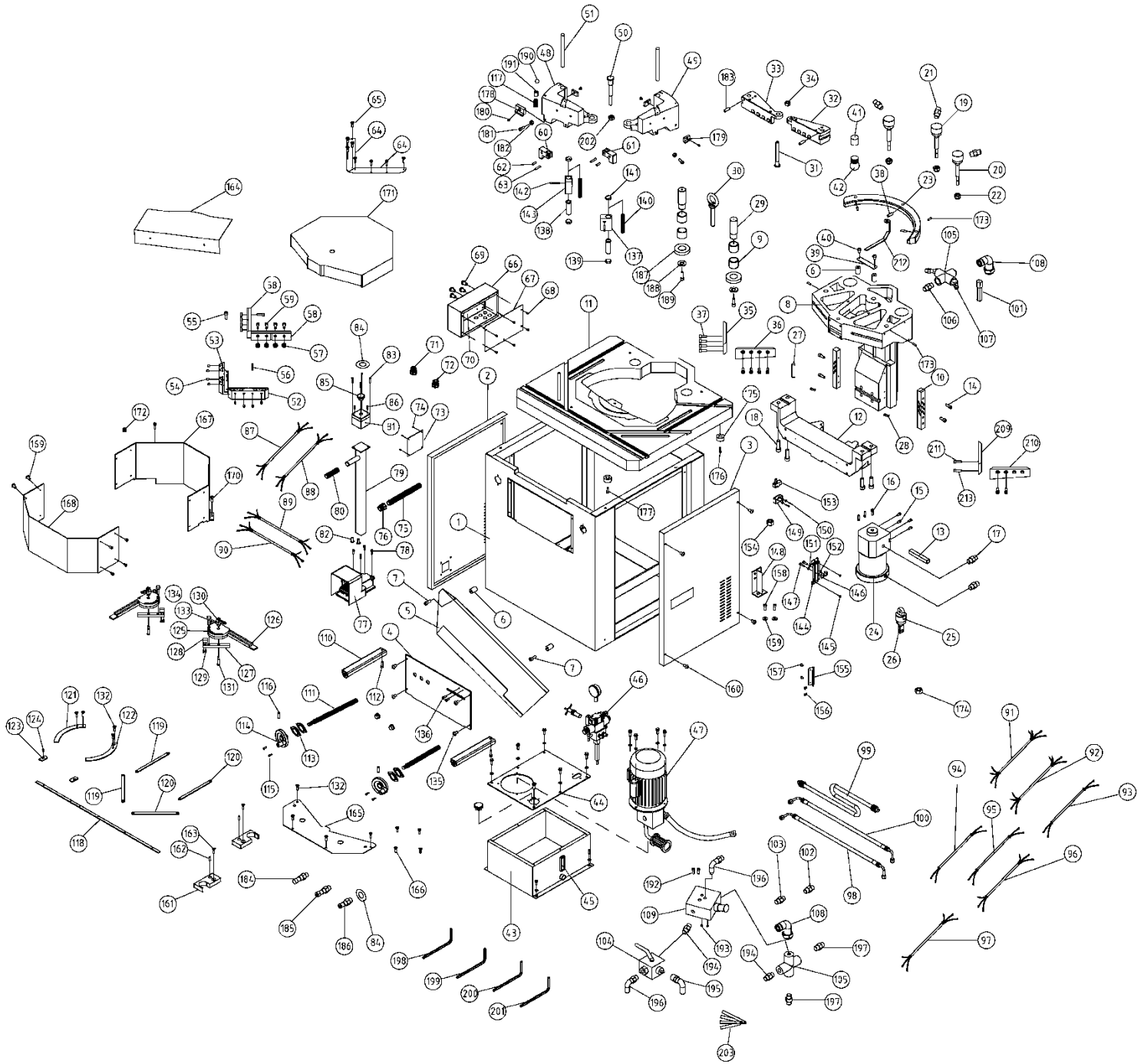
# HYDRAULIC DIAGRAM



REF.	DESCRIPTION
1	4 HP Motor
2	Hydraulic Pump
3	Oil Tank
4	3" Oil Gauge
5	Oil Filling Point
6	1/2" Filter

REF.	DESCRIPTION
7	Solenoid Valve
8	1/4" Pressure Gauge Cut Off
9	250 KGS Oil Gauge
10	Pressure Regulator
11	Check Valve 3/8"
12	Stop Valve
13	Oil Cylinder

# EXPLODED VIEW



## PARTS LIST

<u>Item</u>	<u>Description</u>	<u>Part No.</u>	<u>Qty</u>
1	Base	304128	1
2	Right Cover	-	1
3	Left Cover	-	1
4	Control Box Cover	304132	1
5	Scrap Discharge Chute	-	1
6	Plastic Pad	-	4
7	Cap Screw (M6x50)	-	2
8	Head Set	-	1
9	Copper Rod (Ø70xØ60)	-	4
10	Packing	-	2
11	Table	304131	1
12	Lower Set	-	1
13	Cylinder Key (20x20x150mm)	-	1
14	Cap Screw (M16x35)	-	4
15	Cap Screw (M16x50)	-	4
16	Cap Screw (M16x100)	-	1
17	Oil Bushing (PT3/8"xPT3/8"x90°)	-	2
18	Cap Screw (M16x60)	-	4
19	Single Direction Cylinder	-	3
20	Oil Pressure Rod	-	3
21	Oil Tube Connector (PT1/8"xH1/4")	-	2
22	Lock Nut (M14)	-	3
23	Turning Track	-	1
24	Cylinder	-	1
25	Single Direction Cylinder	-	2
26	Cylinder Fixing Plate	-	2
27	Pin	-	2
28	Key (14x9x60mm)	-	2
29	Main Spindle	-	2
30	Hook (M24)	-	1
31	Blade Setting Rod	-	1
32	Upper Right Blade Kit	-	1
33	Upper Left Blade Kit	-	1
34	Lock Nut (M16)	-	1
35	Left Upper Cutter (30°)	-	1
36	Right Upper Cutter (30°)	-	1
37	Cap Screw (M10x30)	-	8
38	Sets Screw (M8x10)	-	3
39	Bulb Fixing Board	-	1
40	Button Head Screw (M6x10)	-	2
41	Bulb Cap	-	1
42	Bulb	-	1
43	Oil Tank	-	1

<u>Item</u>	<u>Description</u>	<u>Part No.</u>	<u>Qty</u>
44	Oil Tank Cover	-	1
45	Oil Indicator	-	1
46	Electric Distributor	-	1
47	Motor	-	1
48	Right Blade Adjust Set	-	1
49	Left Blade Adjust Set	-	1
50	Blade Setting Rod	-	1
51	Rod	-	2
52	Right Cutter Set	-	1
53	Left Cutter Set	-	1
54	Set Screw (M10x12)	-	8
55	Cap Screw (M10x65)	-	8
56	Key (Ø6 x 20mm)	-	6
57	PU Rod	-	8
58	Cutter	-	2
59	Cap Screw (M10x65)	-	8
60	Right Moving Block	-	1
61	Left Moving Block	-	1
62	Pin (Small)	-	2
63	Pin (Big)	-	2
64	Stainless Cover	-	2
65	Countersunk Phillips Head Screw (M5x8)	-	4
66	Control Box	-	1
67	Control Box Cover	-	1
68	Phillips Head Screw (M4x8)	-	6
69	Button Head Screw (M6x15)	-	4
70	Bottom Board Of Control Box	-	1
71	Connector Of Power Cord	-	4
72	Connector Of Power Cord	-	2
73	Acrylic Board	-	1
74	Rivet	-	4
75	Wire Tube (1/2" x 1050mm)	-	1
76	Bushing (1/2")	-	2
77	Footpad Control Switch	-	1
78	Phillips Head Screw (M5x15)	-	4
79	Emergency Stop Switch Rod	-	1
80	Handle Cap	-	1
81	Emergency Stop Switch Box	-	1
82	Phillips Head Screw (M6x12)	-	2
83	Tapping Screw (M4x42)	-	4
84	Emergency Switch Sticker	-	2
85	Emergency Stop Switch	-	1
86	Phillips Head Screw (M4x8)	-	2
87	Power Cord	-	1
88	Motor Cord	-	1
89	Emergency Switch Cord	-	1

<u>Item</u>	<u>Description</u>	<u>Part No.</u>	<u>Qty</u>
90	Cord Of Footpad Switch	-	1
91	Limit Switch	-	1
92	Limit Switch	-	1
93	Light Cord	-	1
94	Stopping Cord	-	1
95	Solenoid Valve Cord-In	-	1
96	Solenoid Valve Cord-Off	-	1
97	Stopping Cord Of Manual Switch	-	1
98	High Pressure Oil Tube (In) (H3/8"x600)	-	1
99	High Pressure Oil Tube (Out) (H3/8"x1000)	-	1
100	High Pressure Oil Tube (H3/8"x600)	-	1
101	Oil Pipe (H1/8"x1800)	-	1
102	Oil Pipe (H1/8"x700)	-	3
103	Oil Pipe (H1/8"x230)	-	2
104	High Pressure Reduce Bore (1/4")	-	1
105	Cross Joint-(Inner Thread ) (PT1/4")	-	2
106	Bushing (PT1/4"xT1/4")	-	1
107	Bushing (PT1/4"xH1/4"x45°)	-	2
108	Bushing (PT1/4"xH1/4"x90°)	-	2
109	Insert Type-Pressure Reduction Valve	-	1
110	Angle Adjustment Set	-	2
111	Stopping Nut (7/8")	-	2
112	Cap Screw (M12x30)	-	2
113	Bearing Set	-	2
114	Hander Wheel	-	2
115	Button Head Screw (M6x15)	-	4
116	Spring Pin (Ø4 x 30)	-	2
117	Rod Spring	-	2
118	Scale	-	1
119	Left Long Scale	304130	2
120	Right Long Scale	-	2
121	Left Round Scale	-	1
122	Right Round Scale	-	1
123	Short Scale	-	2
124	Phillips Head Screw (M4x8)	-	13
125	Positioning Square	-	2
126	Shoulder Strut	-	2
127	Adjust Moving Plate	-	2
128	Adjust Plate	-	2
129	Cap Screw (M5)	-	4
130	Handle	304121	2
131	Rotator of Protractor	-	2
132	Flat Head Screw (M4x8)	-	8
133	Pin	-	2
134	Knob (M6x10)	304137	2
135	Button Head Screw (M6x30)	-	4

<u>Item</u>	<u>Description</u>	<u>Part No.</u>	<u>Qty</u>
136	Flat Head Screw (M4x10)	-	2
137	Left Pressing Plate	-	1
138	Rod	-	2
139	Round Pad	-	2
140	Spring	-	2
141	Cap	-	2
142	Cap Screw (M8x50)	-	2
143	Right Pressing Plate	-	1
144	Limit Switch Plate	-	1
145	Button Head Screw (M6x10)	-	2
146	Set Block	-	2
147	Flange Bolt (M5x12)	-	4
148	Limit Switch Board	-	1
149	Switch Cover	-	4
150	Phillips Head Screw (M4x30)	-	8
151	Washer (1.5x1/4"x16)	-	2
152	Spring Washer (M5)	-	4
153	Limit Switch	-	4
154	Nut (M4)	-	8
155	Fixing Plate	-	1
156	Button Head Screw (M8x10)	-	2
157	Button Head Screw (M6x10)	-	2
158	Cap Screw (M6x15)	-	2
159	Washer (1.5x1/4"x18)	-	2
160	Button Head Screw (M6x50)	-	8
161	Fixing Block	-	2
162	Fixing Pin (Ø6 x 20)	-	2
163	Countersunk Phillips Head Screw (M4x16)	-	2
164	Chip Leading Board	-	1
165	Angel Plate	-	1
166	Flat Head Screw (M4x8)	-	4
167	Safety Cover	304129	1
168	Head Set Acrylic Cover Board	-	1
169	Button Head Screw (M6x10)	-	12
170	Cap Screw (M6x15)	-	2
171	Head Set Cover	-	1
172	Bushing (PG-16)	-	1
173	Set Screw (M6x20)	-	3
174	Nut (M10)	-	2
175	PU Pad	-	4
176	Flat Head Screw (M10x30)	-	2
177	Cap Screw (M10x30)	-	2
178	Right Anti-Chip Plate	-	2
179	Left Anti-chip Plate	-	2
180	Flat Head Screw (M4x8)	-	4
181	Cap Screw (M6x40)	-	2

<u>Item</u>	<u>Description</u>	<u>Part No.</u>	<u>Qty</u>
182	Nut (M6)	-	2
183	Set Screw (M6x20)	-	2
184	Power Light	-	1
185	Start Switch	-	1
186	Key Lock Switch	-	1
187	Main Spindle Packing	-	2
188	Spring Washer (M16)	-	2
189	Cap Screw (M16x40)	-	2
190	Steel Ball (Ø6)	-	2
191	Bearing	-	2
192	Cap Screw (M6x50)	-	2
193	Nut (M6)	-	2
194	Vertical Bushing (PT3/8"xPT1/4")	-	2
195	Bushing (PT1/4"xH3/8"x90°)	-	2
196	Bushing (PT3/8"xH1/4"x90°)	-	2
197	Vertical Bushing (PT1/4"xH1/4")	-	2
198	Allen Wrench (2.5mm)	-	1
199	Allen Wrench (4mm)	-	1
200	Allen Wrench (5mm)	-	1
201	Allen Wrench (8mm)	-	1
202	Lock Nut (M18)	-	1
203	0.05mm-.08mm Thickness Gauge	-	1
209	Left Upper Cutter (15°)	-	1
210	Right Upper Cutter (15°)	-	1
211	Cap Screw (M10x25)	-	2
212	Flipping Plate	-	1
213	Cap Screw (M10x20)	-	2

*Please contact factory for current prices.*

## ORDERING INFORMATION

Parts are available for direct purchase from Dake or through a distributor. When placing a parts order, you will need to provide the part number, name of part, and model number. All parts shipped F.O.B. Factory in Grand Haven, MI.