



DAKE ELEC-DRAULIC I PRESS

Model 5-075

INSTRUCTIONAL MANUAL



WARNING!

Read and understand all instructions and responsibilities before operating. Failure to follow safety instructions and labels could result in serious injury.

TABLE OF CONTENTS

DAKE STANDARD LIMITED WARRANTY	2
RETURN & REFUND POLICY	4
SAFEGUARDING THE POINT OF OPERATION.....	5
SPECIFICATIONS.....	6
SAFETY.....	7
SET UP.....	8
FIRST TIME SET UP	8
MOVING THE TABLE	9
OPERATION	10
CONTROLS	10
MAINTENANCE	11
LUBRICATION	11
CHECKING HYDRAULIC OIL LEVEL.....	11
REPLACING HYDRAULIC OIL	11
TROUBLESHOOTING	11
HYDRAULIC DIAGRAM	14
ELECTRICAL DIAGRAMS	16
EXPLODED VIEWS & PARTS LISTS	17
ORDERING INFORMATION	Error! Bookmark not defined.

DAKE STANDARD LIMITED WARRANTY

Finished Machines

Dake warrants to the original purchaser the finished machine manufactured or distributed by it to be free from defects in material and workmanship under normal use and service within 1 year (12 months) from the delivery date to the end user.

Parts

Dake warrants to the original purchaser the component part manufactured or distributed by it to be free from defects in material and workmanship under normal use and service within 30 days from the delivery date to the end user.

The standard limited warranty includes the replacement of the defective component part at no cost to the end user.

Sale of Service (Repairs)

Dake warrants to the original purchaser the component part repaired by Dake Corporation at the manufacturing facility to be free from defects in material and workmanship under normal use and service within 90 days from the return date to the end user, as it pertains to the repair work completed. The standard limited warranty includes repair of the defective component part, at no cost to the end user.

Warranty Process

Subject to the conditions hereinafter set forth, the manufacturer will repair or replace any portion of the product that proves defective in materials or workmanship. The manufacturer retains the sole right and option, after inspection, to determine whether to repair or replace defective equipment, parts or components. The manufacturer will assume ownership of any defective parts replaced under this warranty.

All requested warranty claims must be communicated to the distributor or representative responsible for the sale. Once communication has been initiated, Dake Customer Service must be contacted for approval:

Phone: (800) 937-3253

Email: customerservice@dakecorp.com

When contacting Dake, please have the following information readily available:

- Model #
- Serial #
- Sales Order #

Purchasers who notify Dake within the warranty period will be issued a Case number and/or a Return Material Authorization (RMA) number. If the item is to be returned per Dake's request, the RMA number must be clearly written on the exterior packaging. Any item shipped to Dake without an RMA will not be processed.

Warranty Exceptions:

The following conditions are not applicable to the standard limited warranty:

- (a) Part installation or machine service was not completed by a certified professional, and is not in accordance with applicable local codes, ordinances and good trade practices.
- (b) Defects or malfunctions resulting from improper installation or failure to operate or maintain the unit in accordance with the printed instructions provided.
- (c) Defects or malfunctions resulting from abuse, accident, neglect or damage outside of prepaid freight terms.
- (d) Normal maintenance service or preventative maintenance, and the parts used in connection with such service.
- (e) Units and parts which have been altered or repaired, other than by the manufacturer or as specifically authorized by the manufacturer.
- (f) Alterations made to the machine that were not previously approved by the manufacturer, or that are used for purposes other than the original design of the machine.

RETURN & REFUND POLICY

Thank you for purchasing from Dake! If you are not entirely satisfied with your purchase, we are here to help.

Returns

All Dake manufactured / distributed machines, parts and couplings include a 30-day return option. These policies are valid from the date of final shipment to the end user.

To be eligible for a return, the item must be unused and in the same condition as received.

All requested warranty claims must be communicated to the distributor or representative responsible for the sale. Once communication has been initiated, Dake Customer Service must be contacted for approval:

Phone: (800) 937-3253

Email: customerservice@dakecorp.com

Once the return request has been approved by Customer Service, a representative will supply a Return Material Authorization (RMA) number. The returned item must have the provided RMA number clearly marked on the outside packaging. Any item received without an RMA number clearly visible on the packaging will not be processed.

An RMA number can only be provided by the Dake Customer Service team and must be obtained prior to the return shipment.

Refunds

Once the item has been received and inspected for damages, a representative will notify the requestor referencing the provided RMA number.

If the return is approved, a refund will be issued to the original method of payment, less a 20% restocking fee. The restocking fee may be waived if an order is placed at the time of return with like-value merchandise.

Transportation costs are the responsibility of the end user and will not be credited upon return approval.

Any item that is returned after the initial 30 days or has excessive/obvious use will not be considered for a full refund.

SAFEGUARDING THE POINT OF OPERATION

ANSI B11.2 - Hydraulic Power Presses - Safety Requirements for Construction, Care, and Use

It is important that Dake press users have a clear understanding of their responsibility involving the care and use of their Dake hydraulic press, including point-of-operation safe guards. Dake strongly recommends that Dake press users obtain a copy of the current American National Standard Institute (ANSI) B11.2 standard, for a more complete understanding of their responsibilities.

ANSI B11.2 states the following, relative to point of operation safeguarding:

“Normally, only the employer (press user) can determine the requirements of the press productions system components, including the dies and methods for feeding. Therefore, the employer is ultimately responsible to designate and provide the point-of-operation safeguarding system.”

The standard also discusses additional responsibilities of the employer. Some of the key responsibilities are:

- The employer is responsible for the safety, use, and care of the hydraulic power press production system.
- The employer is responsible to consider the sources of hazards for all tasks to be implemented on the hydraulic power press production system.
- The employer is required to eliminate or control identified hazards in the scope of their work activity.
- The employer is responsible for the training of personnel, caring for, inspecting, maintaining, and operating hydraulic press production systems to ensure their competence.
- The employer is responsible to provide and ensure that point-of-operation safeguarding is used, checked, maintained, and where applicable, adjusted on every production operation performed on a press production system.

A complete and current copy of the ANSI B.11.2 standard can be obtained by contacting the following:

American National Standards Institute
1430 Broadway
New York, NY 10018

AMT – The Association For Manufacturing Technology
7901 Westpark Drive
McLean, VA 22102

SPECIFICATIONS

Number	905075
Capacity	75 tons
Horsepower	2
Voltage	220V/440V 3-Phase
Width between uprights	44"
Width between table channels	8-1/4"
Min. ram to table	6"
Max. ram to table	36"

Ram travel	10"
Ram advance speed	28 ipm
Base	55-1/2" x 36"
Height	86"
Weight	1,650 lbs
Horizontal work head travel	24"
Pressing speed	5 ipm
RPM	1,800

In the space provided record the serial number and model number of the machine. This information is only found on the black and gold Dake tag shown below. If contacting Dake this information must be provided to assist in identifying the specific machine.

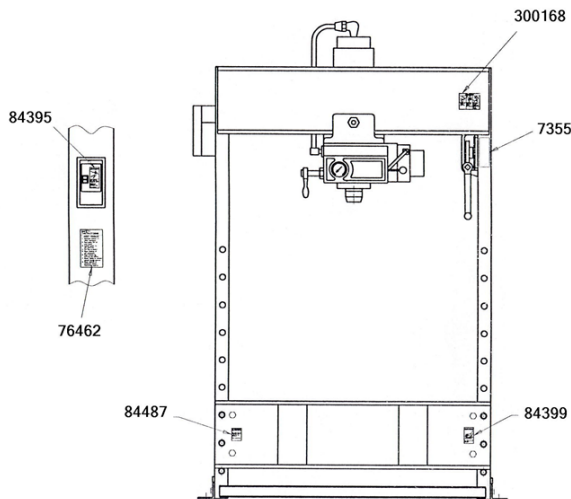


Serial No.	
Model No.	
Install Date:	

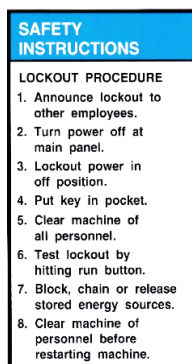
SAFETY

⚠ This is the safety alert symbol. When you see this symbol on your press be alert to the potential for personal injury.

Employer is responsible to perform a hazard/PPE assessment before work activity.



Label Part No. 300168



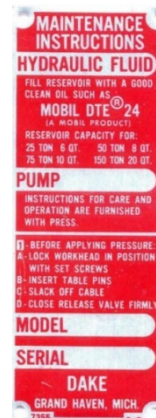
Label Part No.
76462



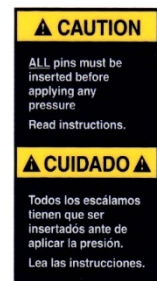
Label Part No.
84399



Label Part No.
84395



Label Part No.
6767



Label Part No.
84487

Additional Warnings:

- **Carefully read all safety messages in these instructions and on your press safety signs.** Keep safety labels in good condition. Replace missing or damaged safety labels.
- Do not alter this press from its original design.
- Do not make repairs or adjustments to any hydraulic system unless you are competent or working under competent supervision.
- Only use Dake original parts.
- This machine is intended to be operated by one person. This person should be conscious of the press ram movement not only for themselves but also for persons in the immediate area of the machine.

- This press is designed for one operator.
- Operator must never place hands in the area of the ram during pressing operations.
- All work requiring the piece to be supported by the operator while being pressed is forbidden.
- Do not use this press for pulling operations.
- It is strictly forbidden to cut, press, or do anything else with pieces whose dimensions or physical nature may explode or produce splinters.
- It is strictly forbidden to tamper with, modify, or elaborate parts of the machine that alter its regular operation.
- A machine not subject to maintenance and periodical structural inspection is a danger for the operator and the persons working nearby.

SET UP

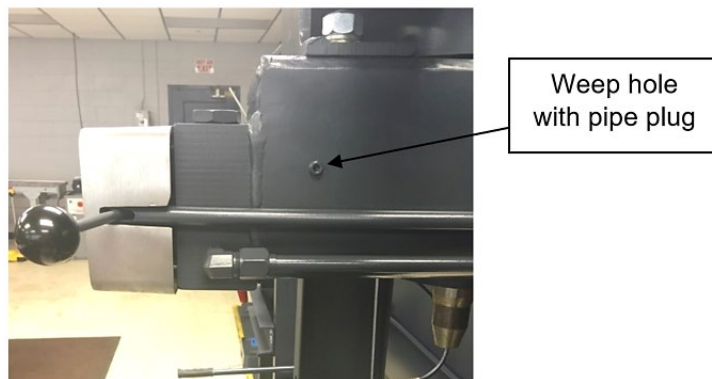
FIRST TIME SET UP

For shipping convenience, the hoist crank was removed from the press and will need to be attached upon arrival.

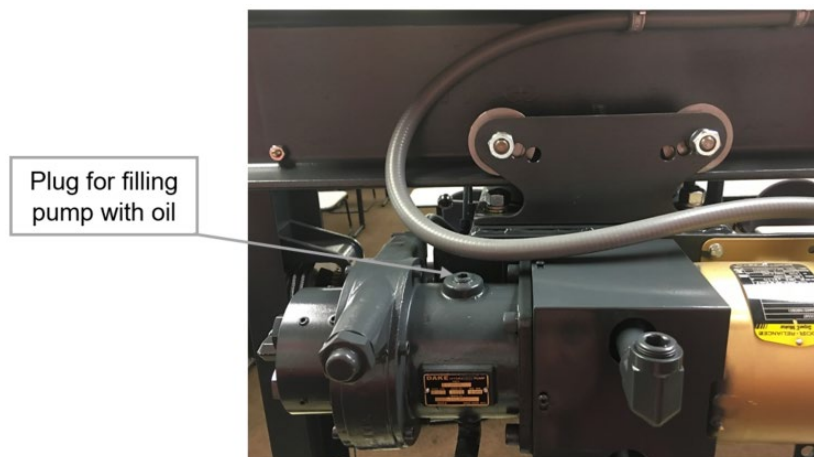
1. The press should be set on a level floor with the base angles touching the floor at all points, using shims where necessary.
2. Bolt the press to the floor using 4 anchor bolts.
3. Motor starter box is mounted on left upright. Have electrician connect power to motor starter. Pump can rotate in either direction.
4. Fill the press with oil. Use Mobil DTE oil No. 24 or equivalent. Remove the NPT pipe plug from the weep hole located on the right side of the reservoir. Start to fill the reservoir using the pour spout at the back of the press. Once oil starts to run out of the weep hole stop filling and replace the pipe plug.

****Filter all oil before adding to press****

Model 5-075 requires 10 quarts of oil.




5. Prime the pump by removing the plug on the top of the pump and filling it with oil. Wait until the oil levels equalize between the reservoir and the pump, then replace the plug and making sure the seal is tight.



6. Attach nose piece to ram by inserting shank into ram and tightening the set screw.

MOVING THE TABLE

CAUTION!

1. Place the hoist crank on the lift drum shaft. Turn the hoist crank to relieve the pressure on the table pins. Keeping tension on the hoist crank, remove the table pins one at a time. After removing the table pins, turn the crank that controls the table and run it top to bottom.
2. Ensure that the cable is tracking correctly, this means the cable should be on each of the two upper pulleys and should track back and forth on the cable drum.
 - a) If tracking problems exist, contact the Dake for instructions.
3. Be sure the table pins are fully inserted in place before applying pressure, servicing, cable tracking, or set up for desired work opening.  **Always be sure to put slack into the cable before operating the press.**




OPERATION



WARNING: DO NOT OVERSTROKE THE RAM. Overstroking will cause premature seal failure.

Model 5-075 maximum stroke is 10 inches.

CONTROLS

- Three set screws (Item 100) are used to lock the workhead in the desired position along the head channels.
- The hand crank (Item 19) is used to raise and lower the table channels to the proper work height. When desired height is reached insert the table pins, three pins on each side.
 -  **Be sure all the table pins are in place and inserted as far as they can go before pressure is applied.**
 -  **Be sure to put slack into the cable before pressure is applied.**
- The handle on the left side of the workhead (Item 67) opens and closes the ball valve, which releases pressure on the ram. This valve should be kept firmly closed and only opened when it is time to move the ram to its up position.
- The two table plates (Item 6) and two V-blocks (Item 7) are used for supporting the work in process.
- The control handle (Item 86 & 91) on the right side of the panel regulates the speed of ram travel. The handle will return to the off position when released. It is not necessary to stop the motor after each operation.
- The relief valve (Item 79) has been factory set to open when maximum tonnage of the press is reached. The valve should only be adjusted by a professional technician.
 -  **Never exceed the rated tonnage of the press.**

MAINTENANCE

LUBRICATION

- Keep all working parts of the press well-oiled for easier operation.
- Keep a light film of oil over the entire surface of the ram to prevent rust.

CHECKING HYDRAULIC OIL LEVEL

Hydraulic oil should be checked and refilled as needed once a week.

Amount needed may vary dependent on machine use

To check, open the weep hole, if oil leaks out then the press is still filled properly. If it is not, use step 4 in the "SET UP" section of the manual to add oil.

REPLACING HYDRAULIC OIL

Recommended to replace hydraulic oil every 6 months of machine use.

Amount needed may vary dependent on machine use

To empty oil, remove the pipe plug located in front of the ram and use a bucket to catch the old oil. To fill use step 4 in the "SET UP" section of the manual.

Priming the pump is not necessary after replacing oil in the machine.

TROUBLESHOOTING



CAUTION!

- Use extreme caution when disconnecting any parts of the machine to not introduce any dirt/dust into the hydraulic system, ensure all parts stay clean.
 - Filter any oils before adding into the machine.
- When performing any maintenance make sure proper lockout procedure is followed.
- High pressure fluid is present in operational hydraulic systems. Fluids under high pressure are dangerous and can cause serious injury or death. Do not make modifications, repairs or adjustments to a hydraulic system unless you are competent or working under competent supervision. If in doubt, consult a qualified technician, engineer, or contact the Dake factory.

1. If the press loses pressure:

- a. Check all tubing joints for leaks and tighten tube nuts.
- b. Leakage past the release valve (Item 67). Drain reservoir and remove packing nut (Item 66), valve rod (Item 64), and ball valve (Item 63). Clean out valve seat and reseat ball valve using a brass rod as a drift, striking sharply with a hammer. Reassemble valve rod, packing, and packing nut. Refill reservoir with appropriate oil amount.
- c. Leakage past eductor inlet check ball (Item 60). Drain reservoir, remove large pipe plug (Item 62), valve seat (Item 61), and check ball (Item 60). Clean and inspect seat. Reset ball on seat or replace seat with new part if necessary. Reassemble with ball above the seat tightening plugs securely.
- d. Worn leather cup or T-ring seal. If none of the previous conditions seem to have been the cause, the leather cup or T-ring may be worn or damaged. To inspect, drain oil and remove the work head from the press frame. Remove tube assembly (Item 123). Set two 4x4 blocks on the table then raise the table channels with the block up to the bottom of the reservoir applying pressure to the reservoir. Remove roller brackets from the reservoir and lower the work head using the table.

WARNING: Be sure the stroke indicator rod support is installed in the side of the piston. If not, insert 1/2"-13 stud or cap screw into the tapped hole in the piston. This will hold the piston down under spring pressure.

Next remove nuts from cylinder flange and lift cylinder off piston. The piston leather or T-ring seal can now be inspected and replaced if necessary. Press may be reassembled in reverse order being careful not to damage the lip of the leather cup or T-ring seal as it enters the cylinder.

Note: A leather cup will only be in presses made before 1992 or has a serial number before 192522.

2. Press will not develop rated tonnage.

- a. Dirt under ball valves. Refer to 1 – c above.
- b. Worn leather cup or T-ring seal. See 1 – d above.
- c. Relief valve is not set properly. This valve is located on the top side near the right end of the control block at the front of the reservoir. The valve is set at the factory to bypass oil from the pump back to the reservoir when the press reaches its rated capacity. The load on the spring (Item 75), which governs the pressure at which the valve will bypass oil, is adjusted by turning the screw (Item 79) in to increase pressure or out to decrease pressure. Replace seal (Item 74) and cap nut (Item 78).

Note: We advise that the relief valve not be tampered with after it is set to the capacity of the press.

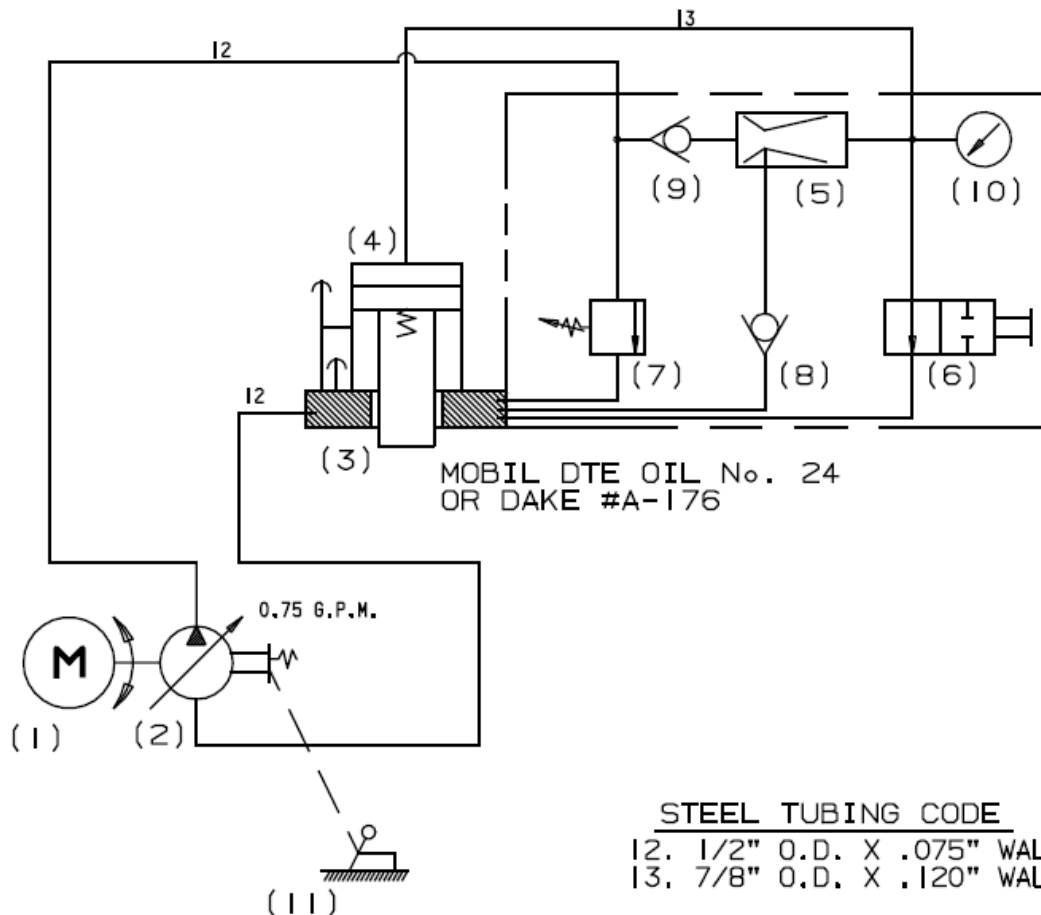
3. Nothing happens when press is operated.

- a. If motor does not run, the electrical circuit should be investigated.
- b. Release valve is open. Be sure to have release valve firmly closed when using press.
- c. If the ram will come down only a fraction of its rated stroke, check the oil level in the reservoir with the ram at the top of its stroke.
- d. Eductor nozzle is plugged. If motor labors and ram does not move when pump control knob is turned, the orifice in the eductor nozzle (item 73) may be plugged. Drain reservoir, remove tube assembly (Item 123), eductor bushing (item 70), eductor body (item 72), and eductor nozzle (Item 73). Clean out orifice with a 1/32" drill. Replace parts being sure not to install item 72 backwards. See parts drawing. Check O-ring and back-up washer (items 71A & 71B) to be sure it has not been damaged.

4. Press is operating slow.

- a. Improper oil. It is essential that the recommended oil (Mobil DTE 24 or equivalent) be used. Heavier oils cause a marked reduction in the ram speed.
Note: DO NOT USE HYDRAULIC JACK OIL.
- b. Release valve not closed properly. Release valve must be firmly closed when using the press.
- c. The seal on the piston rod for the 50-101 pump is worn. A worn seal will pull air into the pump causing the pump to slowly lose its prime. To test, place grease around the control rod where it goes in and out of the seal (Item 129). Then replace seal part number 26573.
- d. The piston rod for the 50-101 pump is bent or rusted. Contact Dake for rebuilding the pump. **Note: Adjustments to the pump are not necessary and the pump should not be tampered with because expensive damage could occur.**

HYDRAULIC DIAGRAM



Drawing #9351036

1	Motor	2 H.P.
2	Pump	950101
3	Reservoir Assembly	716869P
4	Workhead 220V	905076-2
	Workhead 440V	905076-4
5	Eductor Assembly	
	Nozzle	1287
	Eductor Body	2241
6	Release Valve Assem.	
	Ball Valve	1936
	Release Valve Rod	2257
7	Relief Valve Assem.	
	Valve Seat	891
	Ball Valve	918
	Spring	893
	Adjusting Screw	2237

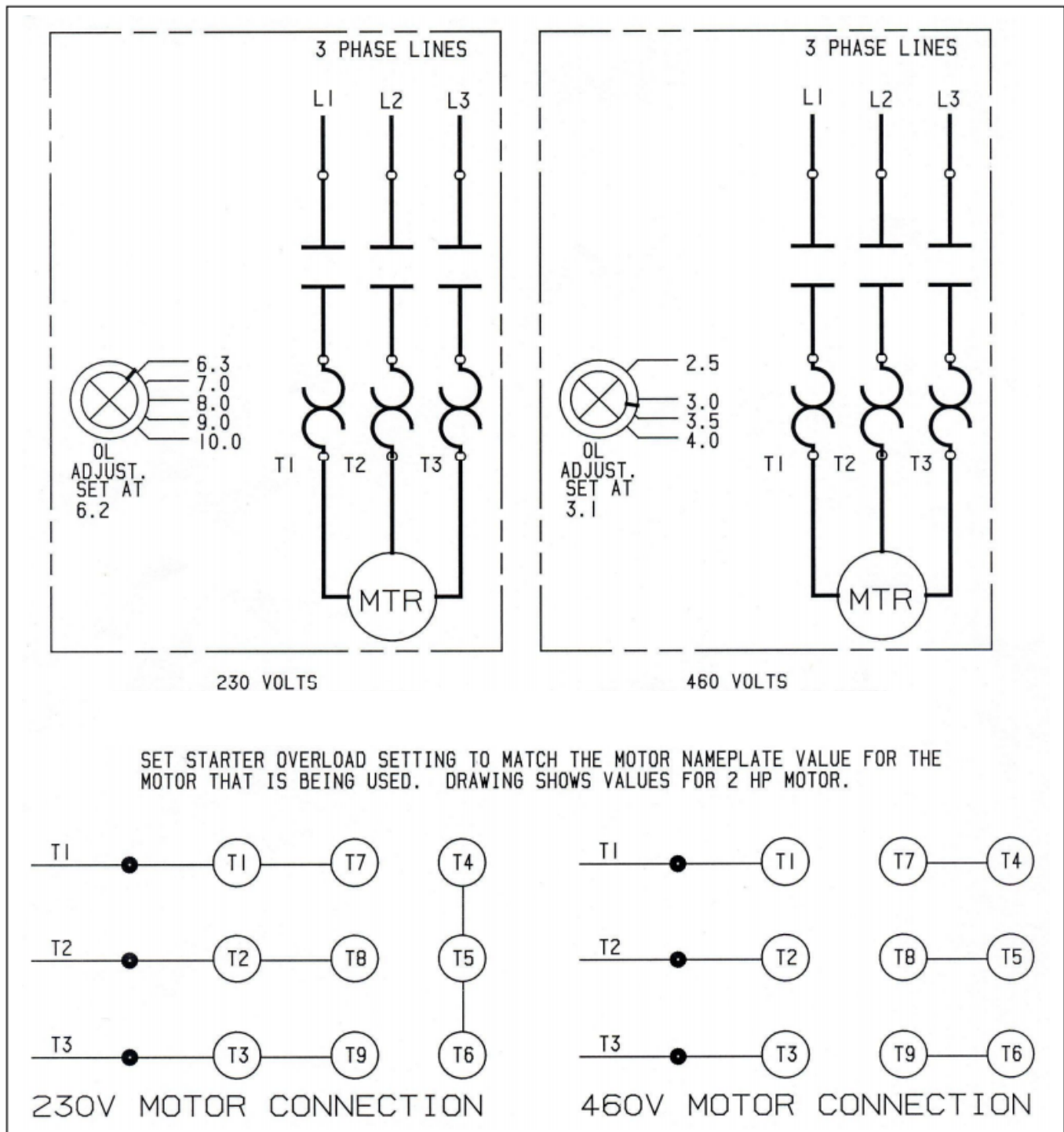
8	Intake Check Valve Assem.	
	Ball Valve	586
	Valve Retainer	1953
9	Check Valve Assem	
	Ball Valve	586
	Spring	579
	Seat	1300
10	Gauge	71272
11	Control Rod Assem.	
	Control Handle	27433
	Control Rod	27621

Sequence of Operation:

1. Press Idle – Dake Elec-draulic presses are operated through lever (11) after turning the electric motor switch to “ON”. This lever operated through its range provides ram speeds from zero to the maximum rated pressing speed of the press. This is done entirely within the pump (2) and does not require a variable speed electric motor.
2. Advance – When release valve (6) is closed, the fluid flows through the manifold and check valve (9) to the eductor (5). As the oil passes through the restricted orifice of the eductor (5). It “picks up” oil through the check valve (8), giving rapid advance.
3. Pressing – When the ram meets resistance, check valve (8) closes and maximum pressure can be built.
4. Return – When pressing is completed and lever (11) is returned to zero speed, check valve (9) closes and holds the hydraulic fluid above the ram until it is released back to the reservoir (3) by opening the release valve (6). The ram spring then returns the ram to its up position. In doing this the ram exerts a pressure on the oil and returns it to the reservoir through the open release valve (6).

The relief valve (7) will automatically by-pass the oil back to the reservoir (3) when the oil pressure exceeds system pressure. Check valve (9) holds pressure in the cylinder (4) when relief valve (7) is open. The relief valve (7) is made so the pressure can be reduced to 1/2 its normal operating pressure. By-pass hole in cylinder wall limits travel of ram and protects press from breakage.

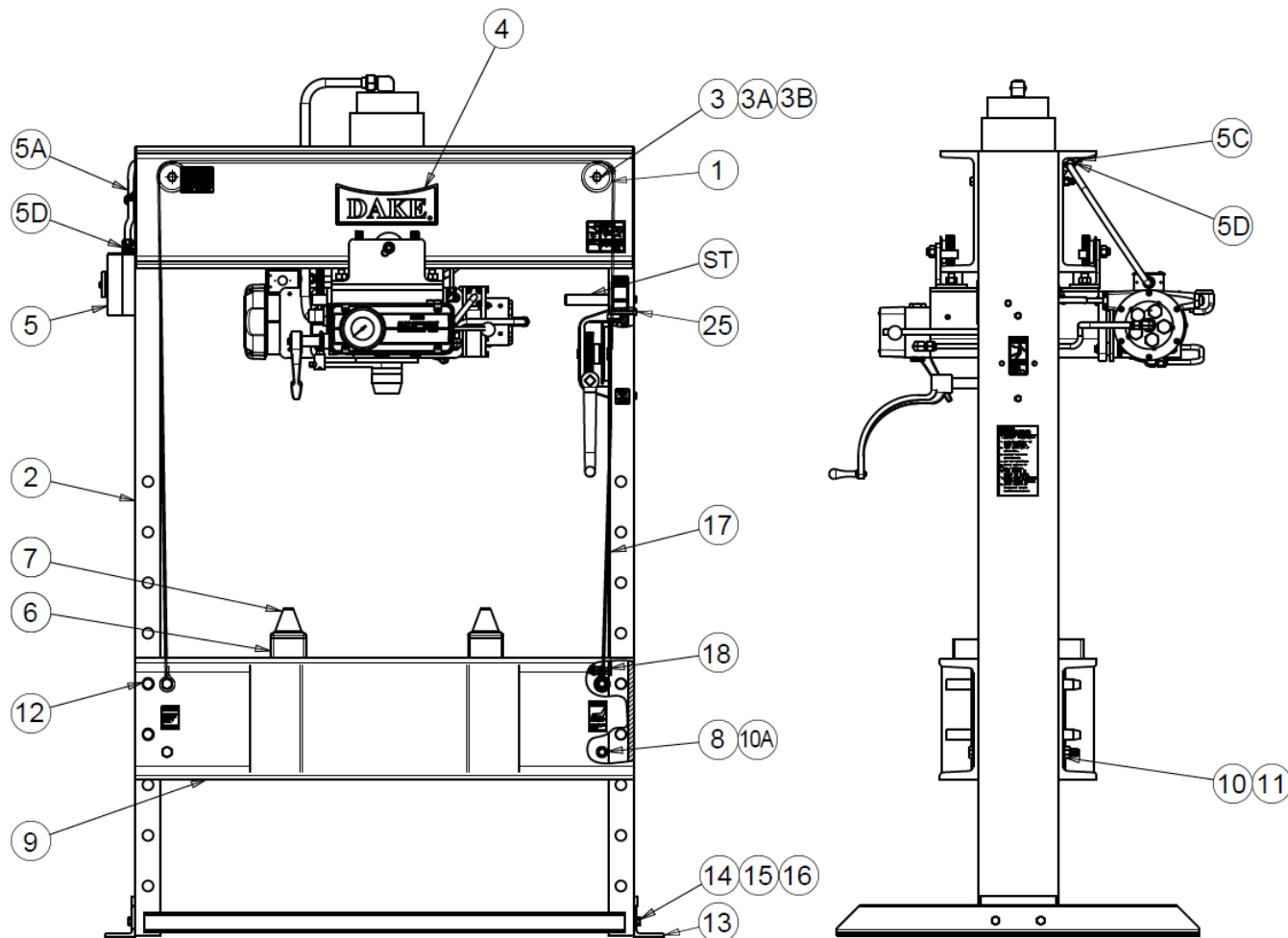
ELECTRICAL DIAGRAMS



Drawing # 33720S1

EXPLODED VIEWS & PARTS LISTS

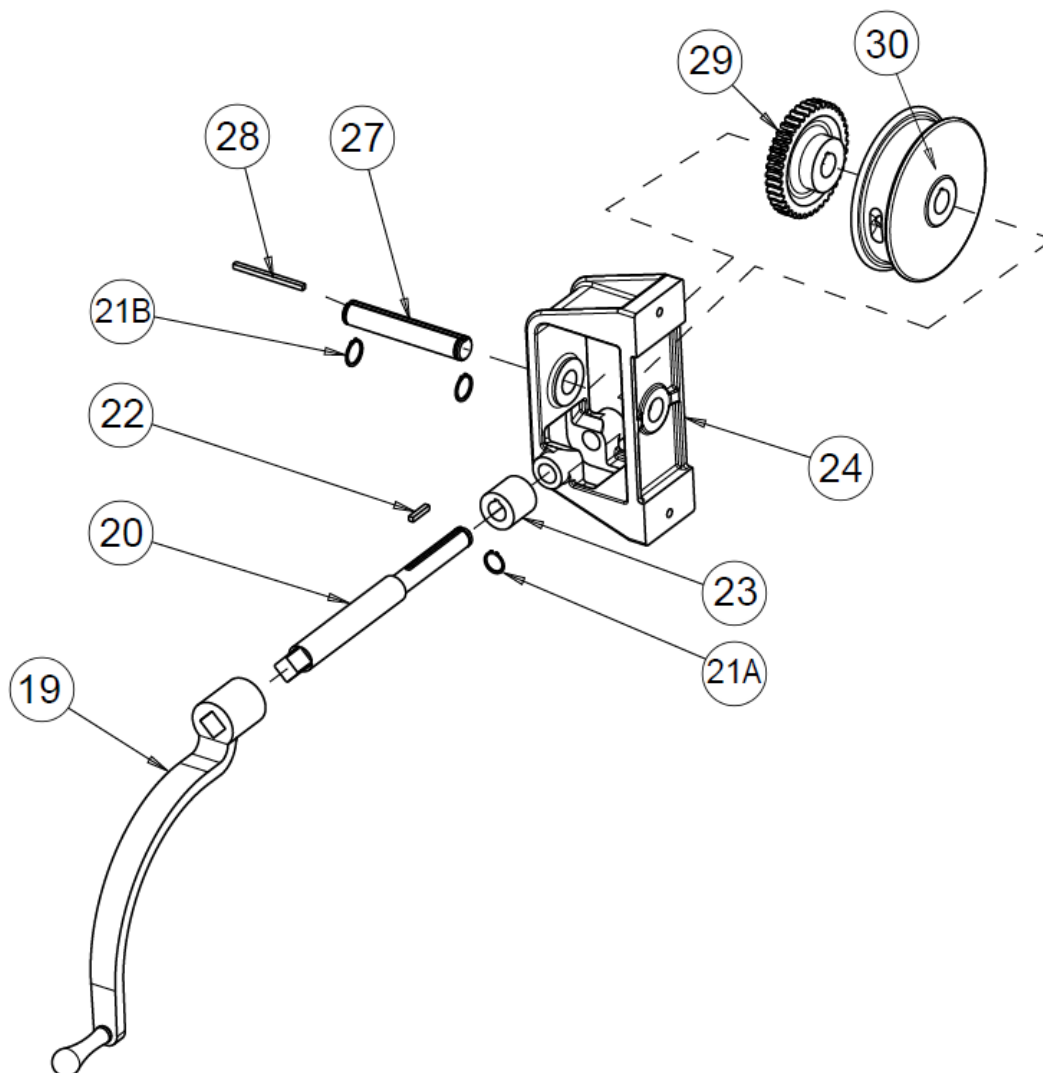
FRAME ASSEMBLY



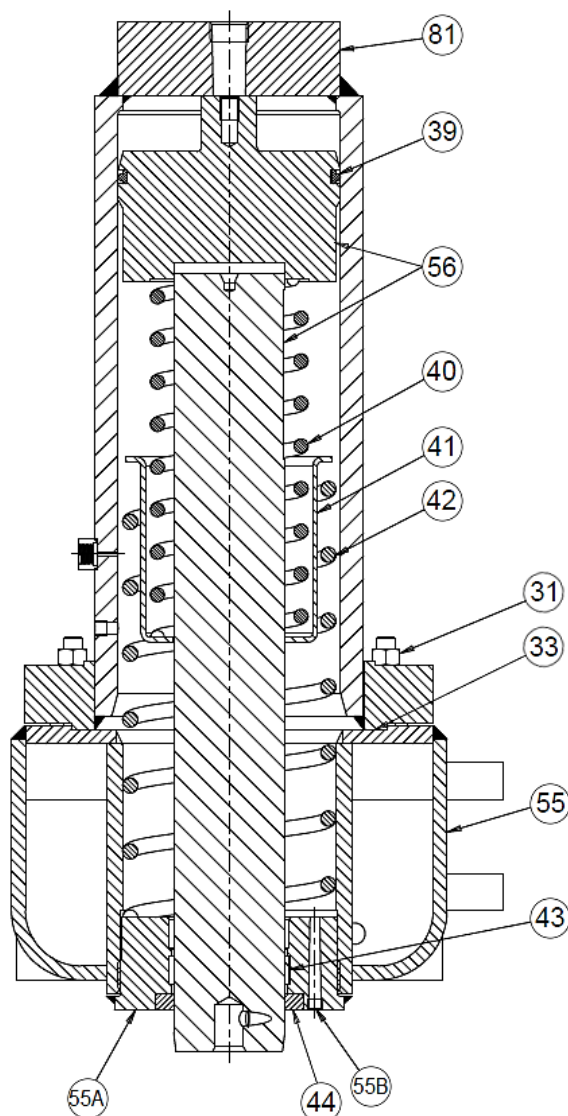
<u>Item</u>	<u>Part Name</u>	<u>Part No.</u>	<u>Qty</u>
1	Pulley	727	2
2	Frame	701152	1
3	Hex Cap Screw (3/8"-16 x 8-1/2")	43361	2
3A	Lock Washer (3/8")	75151	2
3B	Hex Nut (3/8"-16)	303387	2
4	Name Plate	81003	1
5	Starter Enclosure 220V (Used with 302187 or 302189)	302062	1
5	Starter Enclosure 440V (Used with 304090)	303979	1
5*	Starter/Motor Protection 6.3-10Amp 220V	302187	1
5*	Starter/Motor Protection 2.5-4.0Amp 440V	304090	1
5A	Connector with Cord	75151	1
5B	Clamp	303387	3
5C	Screw Clamp	43867	3

5D	Connector (3/8")	41200-01	2
6	Table Plate	702A	2
7	V-Block	336	2
8	Table Spacer	86488	4
9	Table Channel	2243	2
10	Lock Washer (5/8")	43648	4
10A	Bolt (5/8"-11 x 9-1/2")	79983	4
11	Hex Nut (5/8"-11)	43917	4
12	Table Pin	2256	4
12A	Retaining Ring	43982	4
13	Base Angle	566	2
14	Hex Head Bolt (1/2"-13 x 1-1/2")	43349	4
15	Lock Washer (1/2")	43647	6
16	Hex Nut (1/2"-13)	43916	4
17	Cable	45953	1
18	Cable Clamp	991	4
25	Hex Cap Screw (3/8"-16 x 2-1/2")	43335	2
ST	Workhead Travel Stop	62536	1

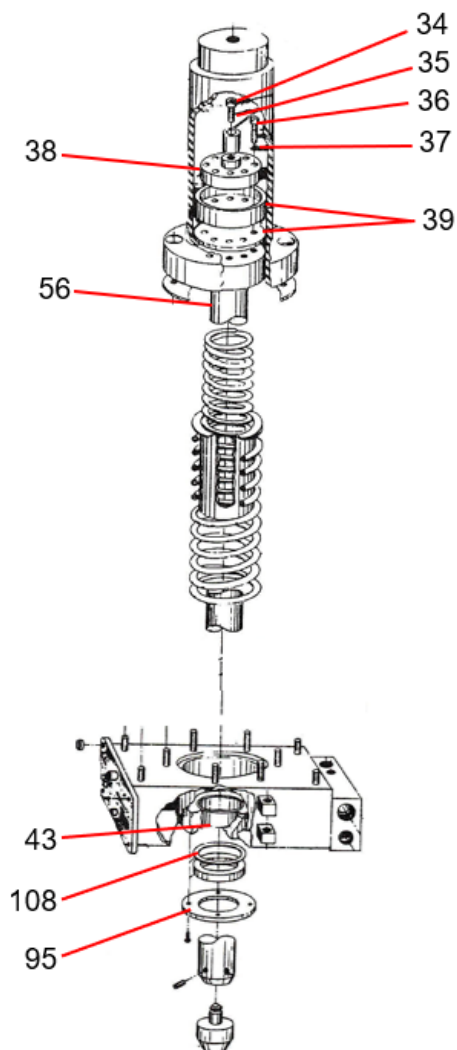
TABLE HOIST ASSEMBLY



<u>Item No.</u>	<u>Part Name</u>	<u>Part No.</u>	<u>Qty</u>
19	Crank Assembly	701653	1
20	Worm Shaft	7530	1
21A	Retaining Ring	43992	1
21B	Retaining Ring	27437	2
22	Key	47364	1
23	Worm	385	1
24	Hoist Frame	725	1
27	Drum Shaft	724	1
28	Drum Key	737	1
29	Worm Gear	736	1
30	Cable Drum	723	1
-	Table Hoist Assembly	701677-S	1



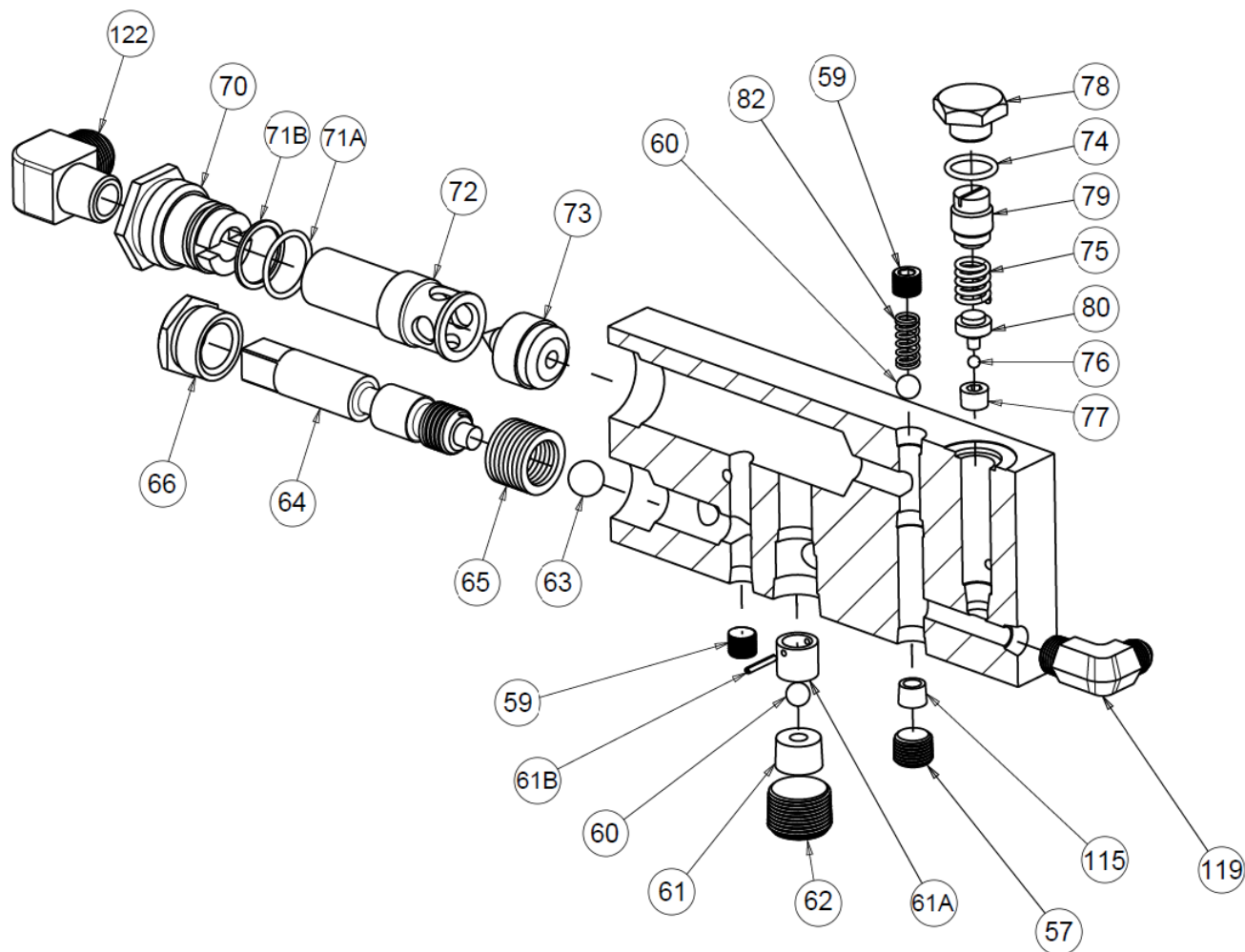
<u>Item No.</u>	<u>Part Name</u>	<u>Part No.</u>	<u>Qty</u>
31	Hex Nut (1/2" - 13)	43916	4
33	Cylinder Gasket	9777	1
39	T-Ring - Serial No. > 192523	17942	1
40	Ram Spring (Small)	2231	1
41	Spring Spacer	2233	1
42	Ram Spring (Large)	2232	1
43	Wear Ring	76807	1
44	Oil Seal	6021	1
55	Reservoir Assembly	716869P	1
55A	Piston Guide	87112	1
55B	Pipe Plug (1/8" NPTF)	589	1
56	Piston Assembly - Serial No. > 192523	716227	1
81	Cylinder	2213	1
-	Cylinder Repair Kit (Includes items: 33, 39, 44, 60, 63, 65, 71A, 71B, 74, 76 & 108)	706555	-



* For presses with serial numbers lower than 192522 or made before 1992 refer to the exploded view and parts list on this page for accurate part information. All other parts that are not listed below are the same for all the 75-ton Elec-draulic l's and can be found in this manual. *

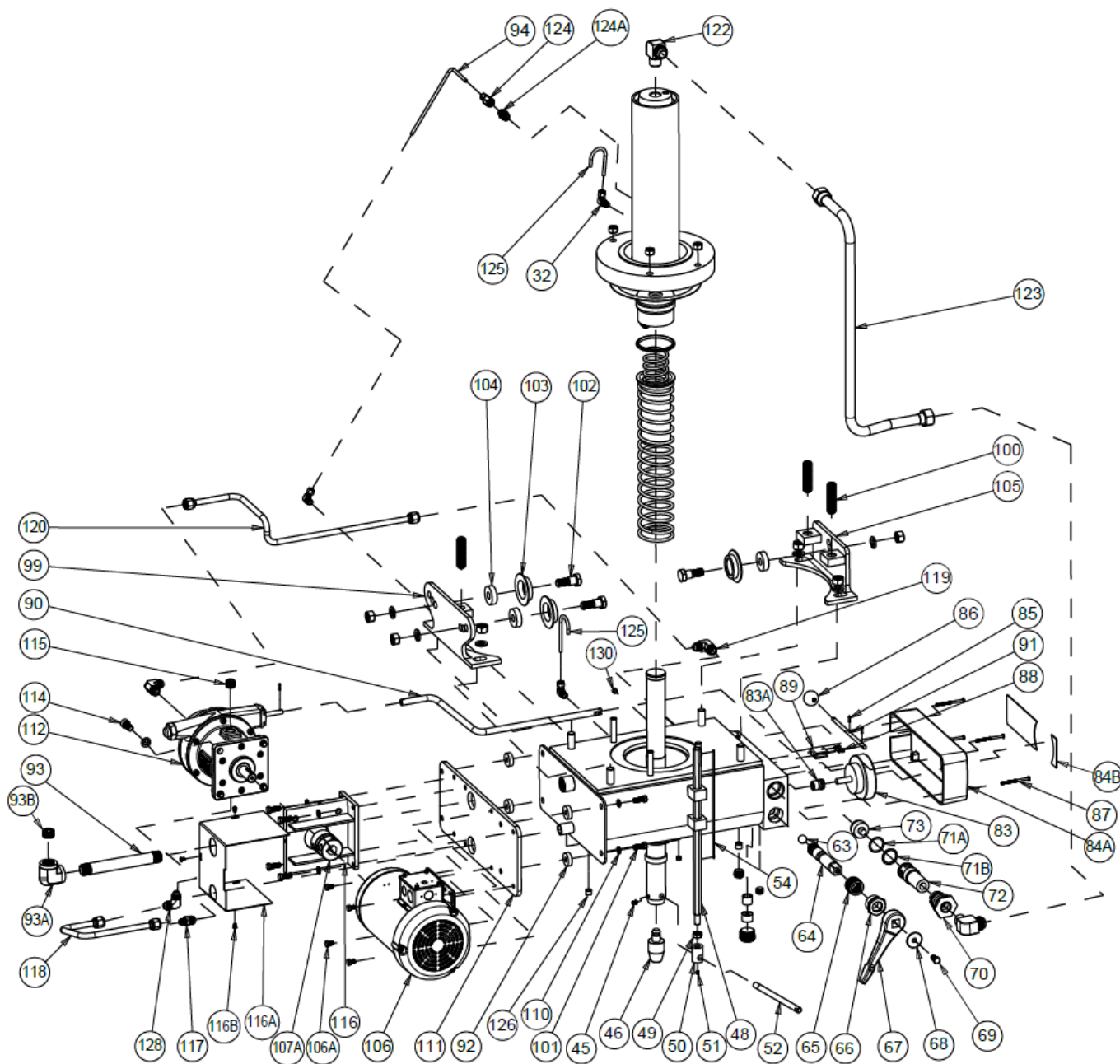
<u>Item No.</u>	<u>Part Name</u>	<u>Part No.</u>	<u>Qty</u>
34	Socket Cap Screw (1/2"-13 x 1-1/2")	43471	8
35	Piston Bumper	2221	1
36	Hex Head Screw (3/8"-16 x 1-3/4")	43332	8
37	Lock washer (3/8")	43645	8
38	Supporting Ring	2222	1
39	Leather Cup	706	1
43	Piston Bushing	2229	1
56	Piston Assembly	701403	1
95	Retaining Plate	6514	1
108	Gasket	6518	1
-	Cylinder Repair Kit (Includes items: 33, 39, 44, 60, 63, 65, 71A, 71B, 74, 76 & 108)	706555	-

EDUCTOR BLOCK ASSEMBLY



<u>Item No.</u>	<u>Part Name</u>	<u>Part No.</u>	<u>Qty</u>
57	Check Valve Seat	1300	1
59	Pipe Plug (3/8")	588	2
60	Ball Valve (Ø 1/2")	586	2
61	Relief Valve Seat	1301	1
61A	Valve Guide	10752	1
61B	Roll Pin	44333	1
62	Socket Head Pipe Plug (1" NPTF)	44282	1
63	Ball Valve (Ø 3/4")	1936	1
64	Release Valve Rod	2257	1
65	Valve Rod Packing	1937	1
66	Packing Nut	1931	1
70	Eductor Bushing	1288	1
71A	O-Ring (1-1/2" OD x 1-1/4" ID x 1/8")	916	1
71B	Back-Up Washer	11223	1
72	Eductor Body	2241	1

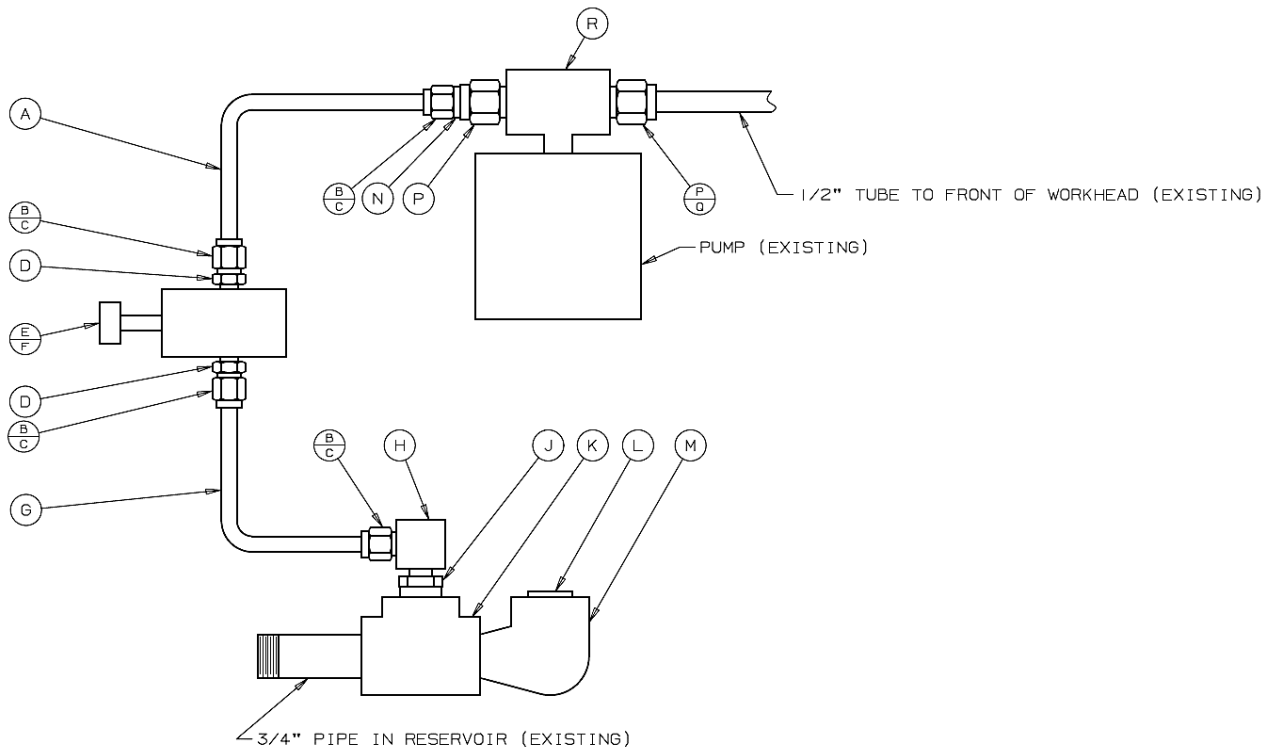
73	Eductor Nozzle	1287	1
74	O-Ring (1-1/8" OD x 7/8" ID x 1/8")	3965	1
75	Relief Valve Spring	893	1
76	Ball Valve (Ø 1/4")	918	1
77	Relief Valve Seat	897	1
78	Valve Cap Nut	2236	1
79	Relief Valve Adjusting Screw	2237	1
80	Ball Retainer	892	1
82	Check Valve Spring	579	1
115	Pipe Plug (1/2" NPTF)	596	1
119	Tube Elbow (1/2" x 3/8" NPTF)	1252	1
122	Tube Elbow (7/8" x 3/4" NPTF)	1944	1
-	Cylinder Repair Kit (Includes items: 33, 39, 44, 60, 63, 65, 71A, 71B, 74, 76 & 108)	706555	-



<u>Item No.</u>	<u>Part Name</u>	<u>Part No.</u>	<u>Qty</u>
32	Tube Fitting – Compression Elbow (1/4" x 1/8" NPTF)	19576	1
45	Set Screw (5/16")	43575	1
46	Nose Piece	701708	1
48	Stroke Indicator Rod	2260	1
49	Hex Jam Nut (1/2"-13)	43940	1
50	Stroke Indicator Rod Nut	2259	1
51	Socket Set Screw (1/4"-20 x 1/4")	43558	1

52	Stroke Indicator Support Stud	2258	1
54	Stroke Indicator Scale	2261	1
63	Ball Valve	1936	1
64	Release Valve Rod	2257	1
65	Valve Rod Packing Washer	1937	8
66	Valve Rod Packing Nut	1931	1
67	Release Valve Handle	2230A	1
68	Spindle Washer	348	1
69	Hex Cap Screw (3/8"-16 x 3/4")	43324	1
70	Eductor Valve Bushing	1288	1
71A	O-Ring (1-1/2" OD x 1-1/4" ID x 1/8")	916	1
71B	Back-Up Washer	11223	1
72	Eductor Body	2241	1
73	Eductor Nozzle	1287	1
83	Gauge	71272	1
83A	Special Gauge Bushing	81384	1
84A	Control Panel (New Style 4")	80744	1
84A	Control Panel (Old Style 3-1/2")	27618	-
84B	Control Panel Decal	27620	1
85	Roll Pin	28524	3
86	Control Handle Knob	27879	1
87	Machine Screw (#10-24 x 1/4")	300248	4
88	Socket Cap Screw (#10-24 x 3/8")	43396	2
89	Control Handle Mounting Bracket	27622	1
90	Control Rod	27621	1
91	Control Handle	27433	1
92	Washer	2248	4
93	Pipe Nipple (3/4" x 8")	44205	1
93A	Elbow Pipe Fitting (3/4" NPTF)	74017	1
93B	Pipe Plug (3/4" NPTF)	1745	1
94	Tubing (1/4" OD x 20 Gauge Wall)	6038	1
99	Rear Roller Bracket	9472	1
100	Set Screw (3/4"-10 x 3")	43616	3
101	Screw (3/8"-16 x 1")	43328	8
102	Roller Screw	1297A	3
103	Flanged Roller	2244	3
104	Ball Bearing	6023	3
105	Front Roller Bracket	9473	1
106	Motor	29744	1
106A	Screw (5/16"-18 x 1/2")	43313	4
107A	Coupling	28498	1
110	Lock Washer (3/8")	43645	8
111	Pump & Motor Base	25915	1
112	Hydraulic Piston Pump	950101	1
114	Hex Cap Screw (1/2"-13 x 1")	43469	4
115	Pipe Plug (1/2" NPTF)	589	2
116	Pump Support	25916	1

116A	Coupling Cover	36912	1
116B	Self-Tapping Screw (#10-24 x 3/8")	43881	3
117	Straight Tube Fitting (1/2" x 3/8" NPTF)	1251	1
118	Tube Assembly	705921	1
119	Tube Fitting – Elbow (1/2" x 3/8" NPTF)	1252	2
120	Tube Assembly	701160	1
122	Elbow Tube Fitting (7/8" x 3/4" NPTF)	1944	2
123	Tube Assembly	701164	1
124	Tube Fitting – Compression Straight (1/4" x 1/8" NPTF)	597	1
124A	Pipe Reducer Bushing	1100	1
125	Tubing (1/4" OD x 24 Gauge Wall)	6038	2
126	Pipe Plug (1/4" NPTF)	1567	1
128	Tube Fitting – Elbow (1/2" x 1/2" NPTF)	17999	1
130	Pipe Plug (1/8")	589	1
-	V-Nose Piece	701712	1
-	Complete Workhead Assembly (Specify Voltage)	905076	-



Optional Relief Valve 713510

<u>Item</u>	<u>Part Name</u>	<u>Part No.</u>	<u>Qty</u>
A&G	Tubing, Hydraulic (3/8")	45923	30"
B	Nut (3/8-37°)	51452	4
C	Fitting (3/8" Inch Sleeve, SAE 6)	51453	4
D	Fitting, Straight O-Ring (3/8" SAE 4-6)	20727	2
E	Relief Valve	61789	11
F	Screw, Hex Cap (1/4-20 x 1-3/4)	43308	4
H	Fitting, Elbow (3/8 x 1/4 NPTF)	1248	1
J	Reducer Bushing (3/4 x 1/4)	733	1
K	Pipe Tee	1742	1
L	Pipe Plug (3/4 NPTF)	1745	1
M	Fitting, Pipe Street Elbow	1740	1
N	Fitting, Tube End Reducer (SAE 8-6)	46615	2
P	Fitting, Tube Nut (1/2-37 Deg. Flare Style "B")	46614	2
Q	Fitting, Tube (1/2" Flare Sleeve, Inch Sleeve SAE 8)	51454	1
R	Fitting, Male Branch Tee (1/2 X 3/8 NPTF)	18249	1
	Relief Valve Assembly - Includes items A-N & R	713510	-

Please contact factory for current prices.

ORDERING INFORMATION

Parts are available for direct purchase from Dake or through a distributor. When placing a parts order, you will need to provide the part number, name of part, and model number. All parts shipped F.O.B. Factory in Grand Haven, MI.

INSTRUCTIONS AND PARTS LIST FOR MODEL 50-101

3/4 GPM Hydraulic Pump Variable Volume – Step Control

DESCRIPTION

This unit is a five-piston axial type piston pump designed for heavy-duty industrial application up to 6000 psi continuous and 8000 psi intermittent. The pump should be coupled directly to the driving source and can be rotated in either direction.

TYPICAL VARIABLE VOLUME CONTROLS

- A) Stem Control – with control stem out (return spring), output delivery is zero gpm – pushing in on the control stem increases pump delivery from zero to the maximum gpm.
- B) Knob Control – with the control knob adjusted out (counterclockwise rotation), output delivery is zero gpm – turning the control knob clockwise increases pump delivery from zero to the maximum gpm.
- C) Pressure Compensated – circuit operating pressure is controlled by setting the compensator valve mounted on the pump. Turning the knob clockwise increases circuit pressure, counterclockwise decreases circuit pressure. Output delivery of the pump at zero circuit pressure is maximum gpm – when circuit pressure reaches the setting of the compensator valve pump output automatically decreases to supply the exact flow rate required by the system.

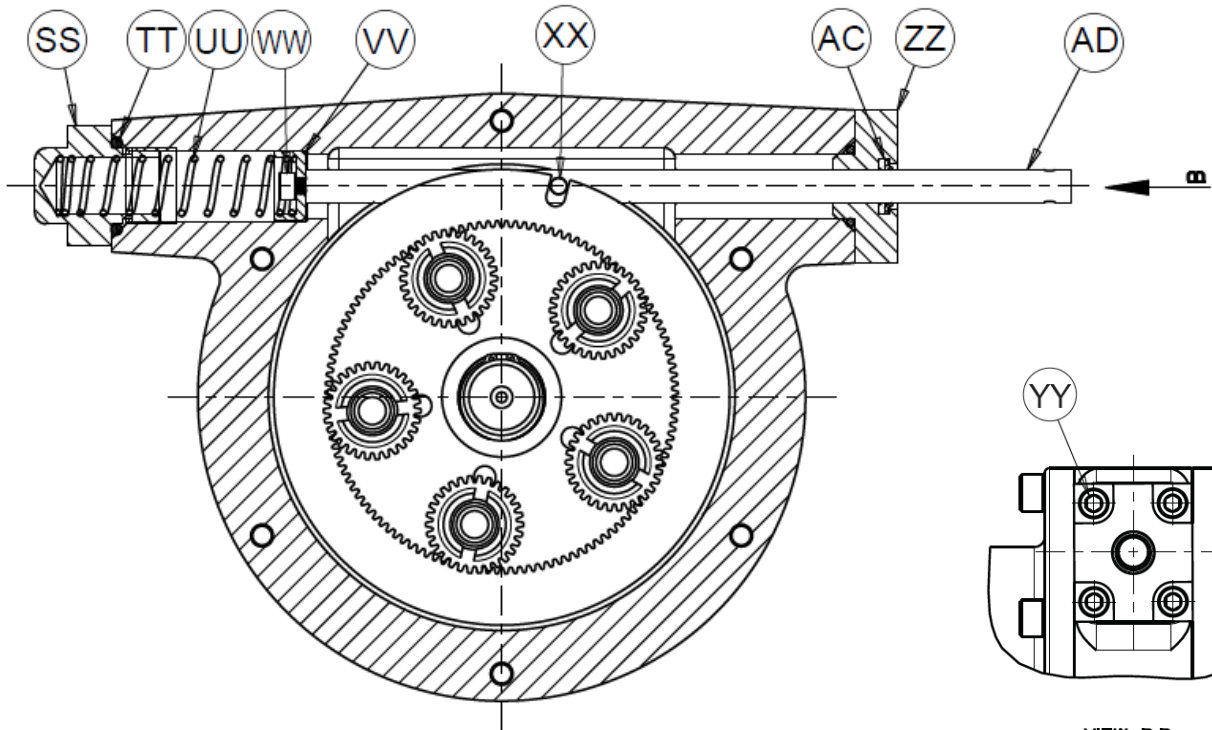
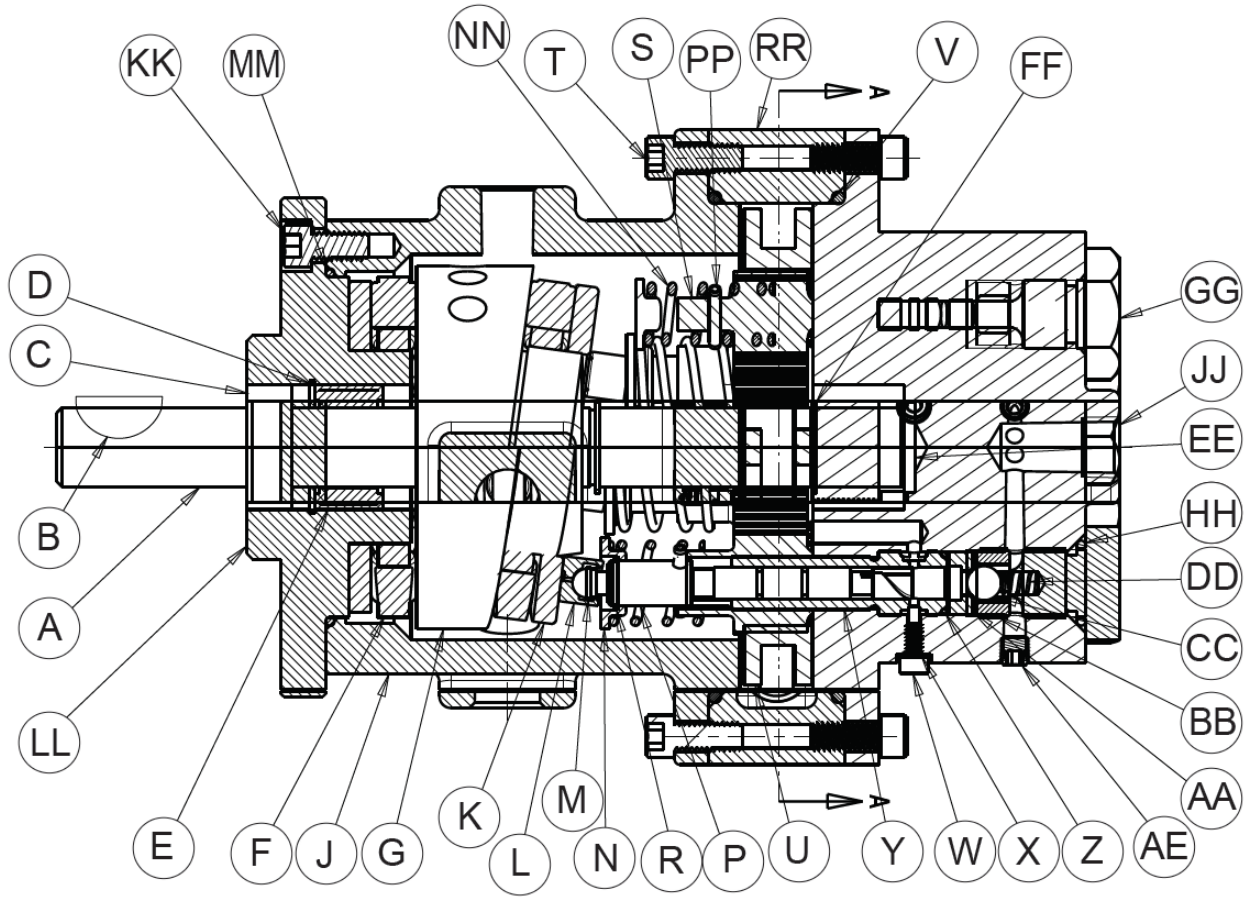
INSTALLATION

- 1) Rotation – Pump shaft rotation can be in either direction.
- 2) Shaft Alignment & Pump Mounting – The alignment of the pump and motor is critical, having a direct relation to pump bearing, shaft seal and coupling life.
- 3) Fluid Connections – Pressure and intake line piping should correspond to port size to keep fluid velocities in an acceptable range. Do not bush down to a smaller size.
- 4) Safety Valves – The high-pressure line must have a relief valve close to the high-pressure outlet to prevent damage to the pump. In a circuit using the pressure compensated pump, the relief valve should be set several hundred psi above the compensator pressure to minimize transient pressures due to compensator overtravel.
- 5) Filtration – Cleanliness of fluid and components is of extreme importance in high-pressure hydraulic circuits. A suction strainer of 140 microns or less and a twice pump capacity should be used in the pump inlet line.

MAINTENANCE

- A) Minor Repairs – Minor repairs are considered those that do not involve total disassembly of the pump. External leaks around the pump, for example, can usually be eliminated by tightening screws and/or fittings around the leakage area. Replacement of leaking shaft or O-ring seals is a minor repair that can be done in the field. The Dake service manual should be consulted for the necessary part numbers.
- B) Major Repairs – Major field repairs can be accomplished in an emergency; however, it is recommended that the Dake factory be contacted for necessary assistance. Dake pumps are built to give long-term dependable service. If they should eventually require overhaul, factory rebuilding is recommended when possible since disassembly and assembly can damage many parts. This minimizes replacements with net savings to the user. Trained Dake personnel with complete rebuilding and testing facilities permit rapid overhaul and testing, resulting in minimal downtime for the customer as well as the added advantage of complete factory testing after repair.

SYMPTOM	CAUSE	SOLUTION
Inadequate or no flow from pump	Inlet line is above fluid level	Check fluid level and provide adequate fluid to fill entire system
	Air in suction pump	Check for loose inlet line connections
	Pump not primed	Fill pump cast with Mobil DTE 24 or equivalent and run until pump picks up prime
	Broken drive shaft or coupling or loose coupling	Replace broken parts and tighten setscrews in coupling
	Oil viscosity is too high	Use proper viscosity fluid for operating temperature conditions
	Dirty or clogged oil suction filter	Clean filter and check at least once a month
	Broken piston return spring (item NN) or check valve spring (item DD)	Replace broken parts and reassemble
Pump will not build pressure	Loose check valve seat retainers (items BB)	Retighten loose parts, use thread-locker when retightening
	System relief valve stuck open	Check valve for contamination
Pump is running hot	System relief valve constantly spilling	Check relief valve setting and work cycle
	Duty cycle excessively at high pressure	Install oil cooler on fluid reservoir
Noisy pump or system	Air in system	Bleed all circuit trapped areas
	Pump cavitation	Check for restriction in pump inlet or for loose fittings in inlet line
	Coupling misaligned	Realign couplings
	Broken piston return spring (item NN)	Replace broken parts and reassemble
	Loose piston shoe (item L)	Replace with new parts (items L & M)
Pump will not prime or loses prime	Loose cylinder locking screws (items W)	Tighten screws
	Worn or damaged shaft seals (items C or AC)	Replace with new parts
	Faulty O-ring (items V, MM, TT, or AB)	Replace with new parts
	Air in suction	Check for loose fittings and tighten



SECTION A-A

VIEW B-B

<u>Item No.</u>	<u>Part Name</u>	<u>Part No.</u>	<u>Qty</u>
A	Pump Shaft	25110	1
B	Woodruff Key 608	300449	2
C	Oil Seal	26184	2
D	Retaining Ring – Truarc	27468	1
E	McGill Roller Bearing MR-14	26186	2
F	Rollway Thrust Bearing T618	26185	1
G	Wobble Plate	25200	1
J	Pump Body	25109	1
K	Rollway Thrust Bearing T619	26187	1
L	Piston Shoe	25117A	5
M	National Retaining Ring	26188	5
N	Spring Retainer	25116A	5
P	Piston	25114	5
R	National Retaining Ring	27751	5
S	Piston Rotating Gear	25115	5
T	Socket Head Cap Screw (5/16"-18 x 3/4")	43433	12
U	Control Gear	25120	1
V	O-Ring (5-3/8" ID x 5-5/8" OD)	26183	2
W	Cylinder Locking Screw	25121	5
X	Metallic Screw	26629	5
Y	Cylinder	25113	5
Z	O-Ring (9/16" ID x 11/16")	26564	5
AA	Valve Seat	25122A	5
BB	Seat Retainer	25123A	5
CC	Check Valve Ball	1222	5
DD	Check Valve Spring	25126	5
EE	Thrust Washer	27439	1
FF	Truarc Retaining Ring	27437	2
GG	Pump End Cap	25124	5
HH	O-Ring (3/4" ID x 15/16" OD)	3966	5
JJ	Pump Head	25111	1
KK	Socket Head Cap Screw (5/16"-18 x 5/8")	43432	6
LL	Flange	27424	1
MM	O-Ring (3-3/4" ID x 3-15/16")	27438	1
NN	Piston Spring	25119	5
PP	Spiral Pin (1/8" x 7/8")	28688	5
RR	Center Pump Body	26181	1
SS	Control End Cap	27440	1
TT	O-Ring (7/8" ID x 1-1/8")	3965	1
UU	Spring	27441	1
VV	Control Rod End Spacer	25132	1
WW	Socket Head Cap Screw (10-24 x 3/8")	43397	1
XX	Control Pin	25131	1
YY	Socket Head Cap Screw (1/4"-20 x 1/2")	43412	4
ZZ	End Cap	25129	1
AB	O-Ring (3/4" ID x 15/16")	3966	1
AC	Oil Seal	26573	1
AD	Control Rod	25912	1
AE	Pipe Plug (1/16" NPTF)	44276	5
-	Label	26190	1
-	Drive Screws for Label	43573	2
Pump Repair Kit – Includes Items: B, C, V, Z, HH, MM, TT, AC, & AD		712740	-