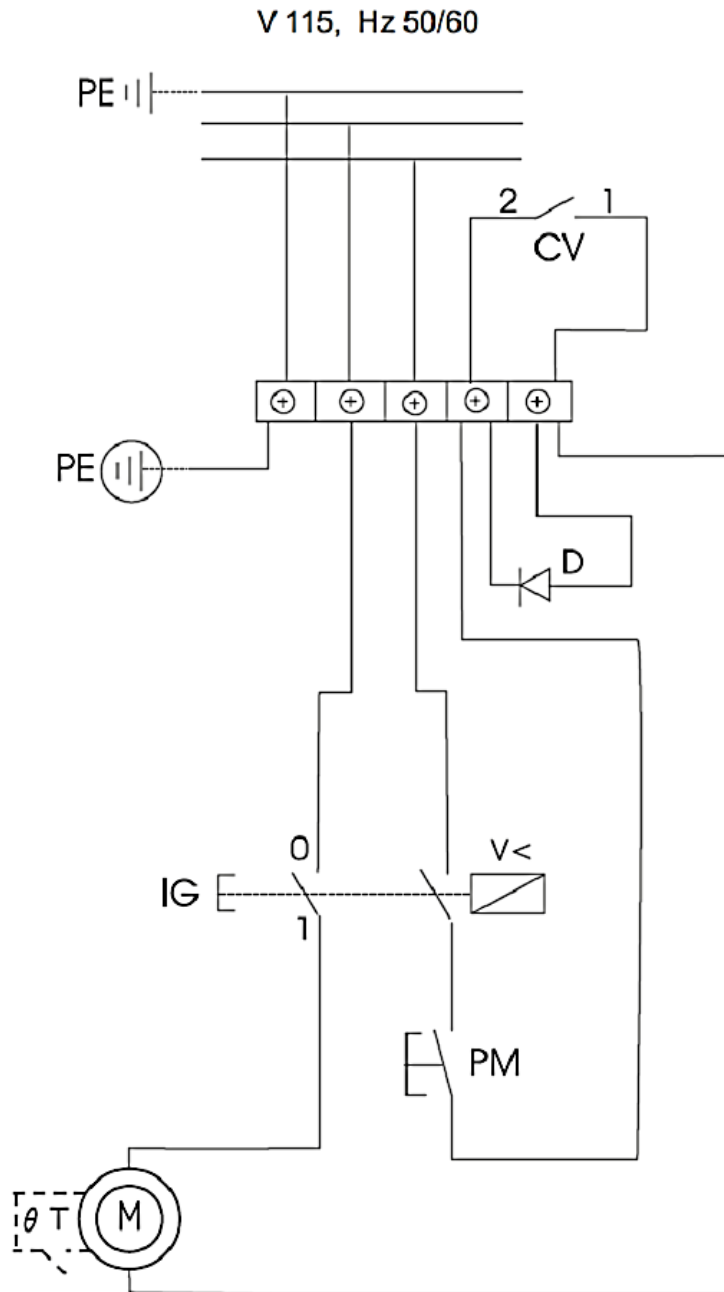
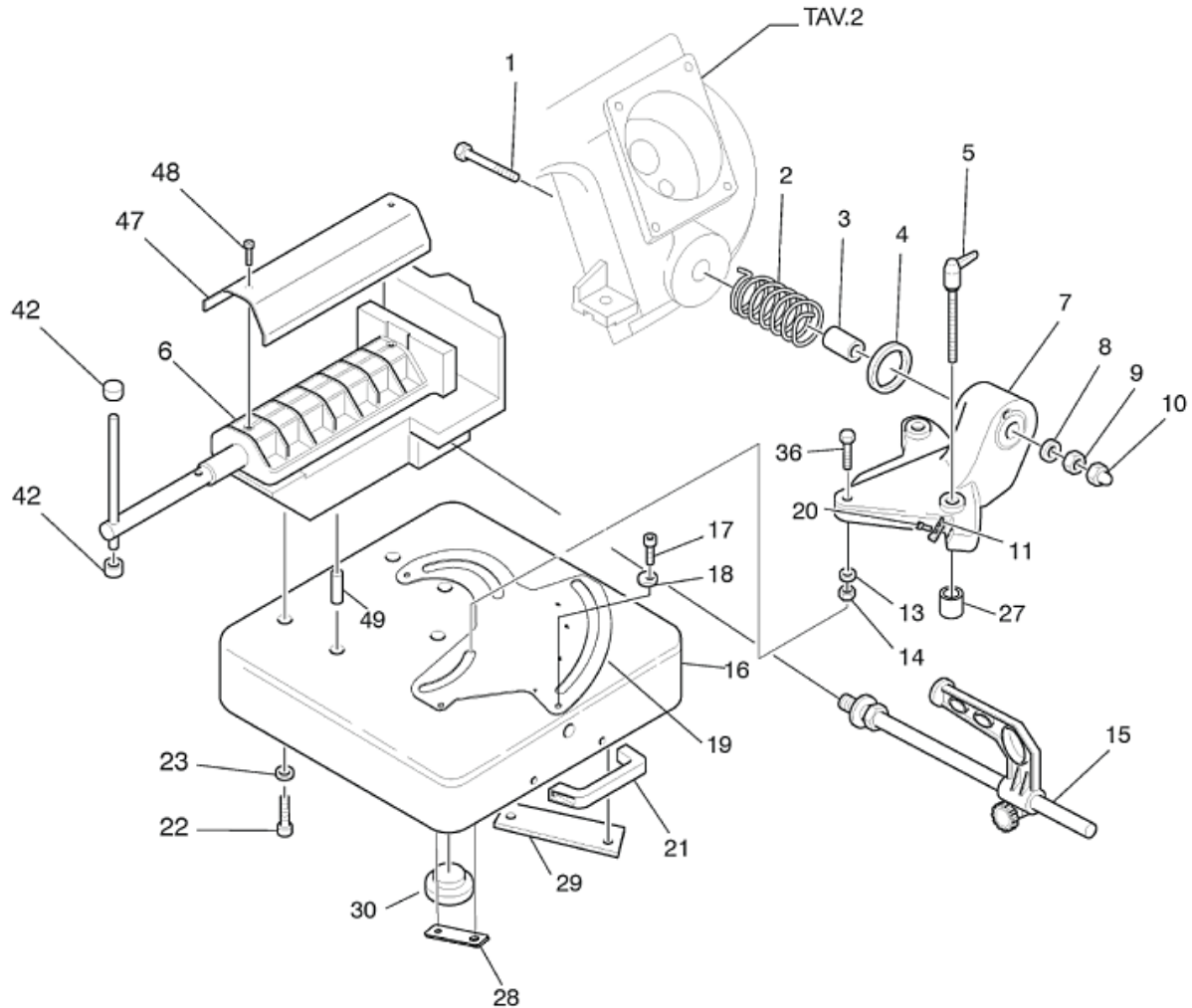


## ELECTRICAL DIAGRAM



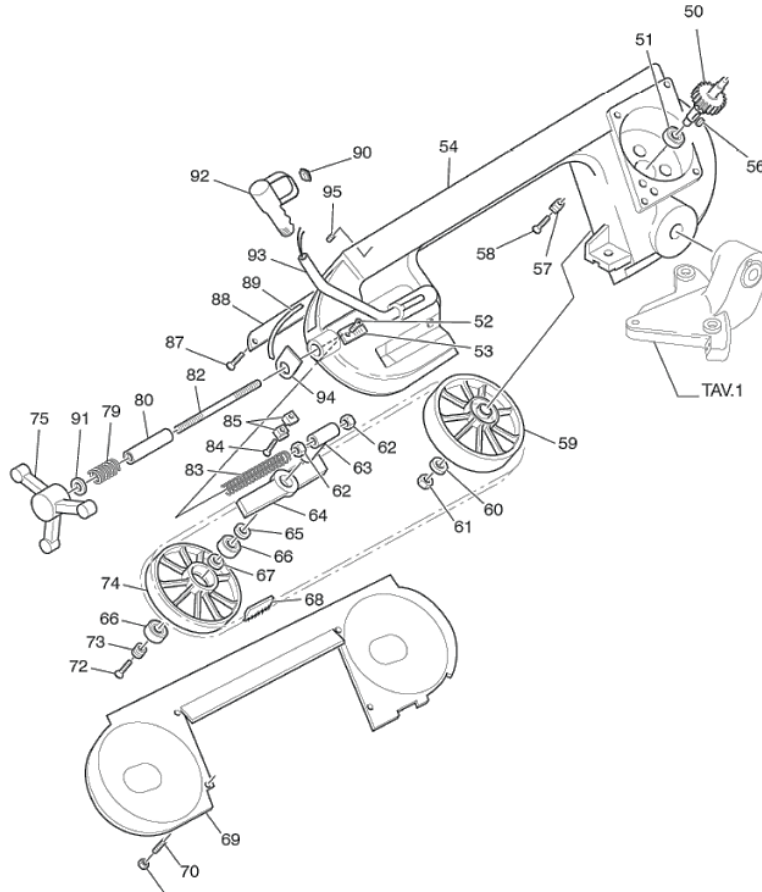
PE	Protection circuit
PM	Run button
Vv	Cutting speed adjustment
FCC	End of cut micro-switch
IG	Magnetic main switch
T	Thermal circuit breaker
M	Motor
D	Electric Diode

## EXPLODED VIEWS & PART LIST



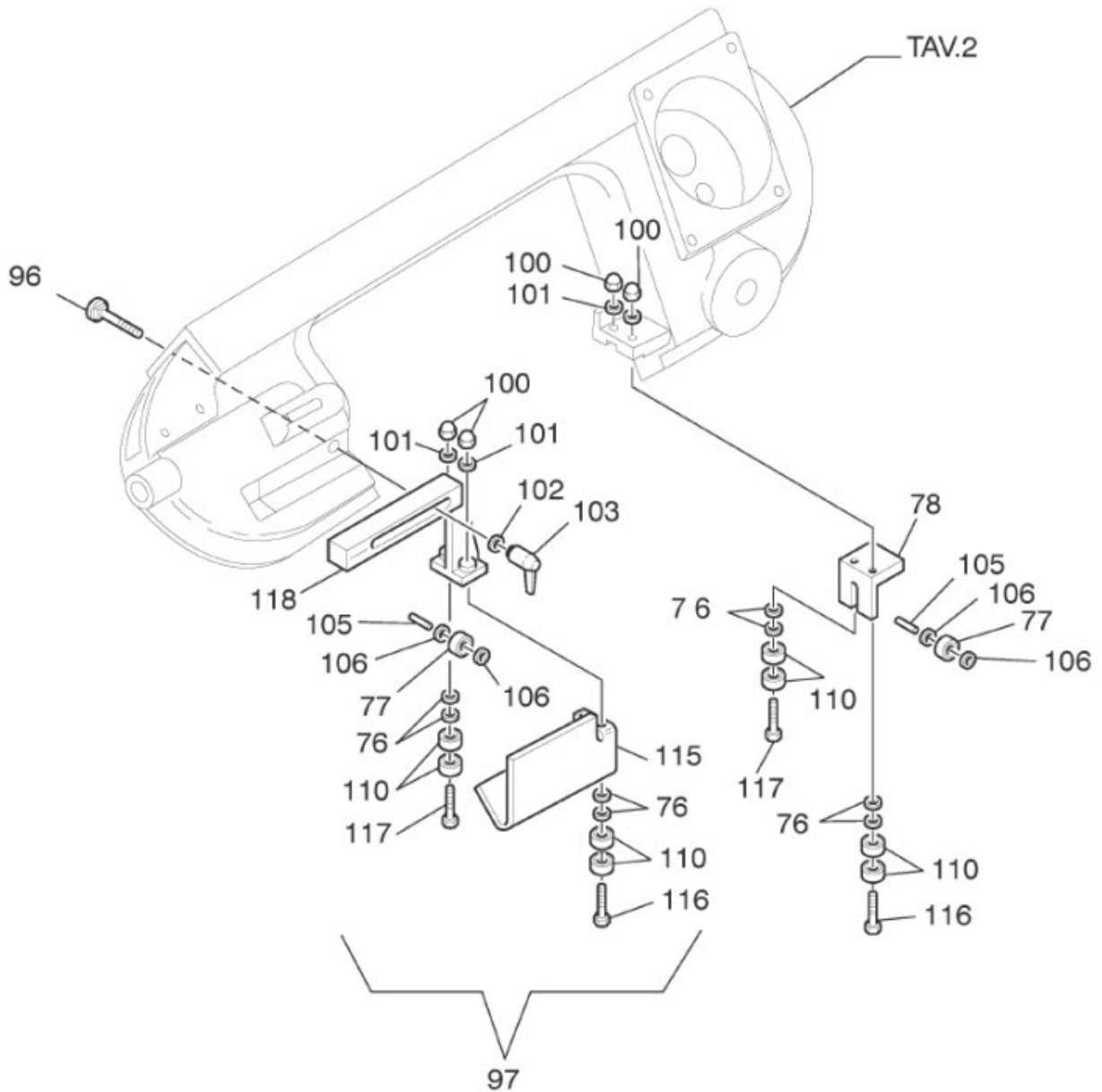
<u>Pos.</u>	<u>Description</u>	<u>Part #</u>
1	Uni 5737 M14x100	
2	5.08.01.32	
3	0.06.30.40	
4	5.12.40.50	
5	0.14.70.03	
6	Complete Vise	303417
7	Swivel Support	303416
8	Uni 6592 Ø14	
9	Uni 5587 M14	
10	Uni 5721 M14	
11	5.15.95.03	
13	0.12.07.18	
14	Uni 7473 M8	
15	7.13.05.52	303788
16	5.13.38.25	
17	Uni 5931 M6x16	

<u>Pos.</u>	<u>Description</u>	<u>Part #</u>
18	5.12.40.29	
19	5.13.80.42	
20	0.40.29.05	
21	0.14.40.03	
22	Uni 5931 M8x25	
23	Uni 6592 Ø8	
27	5.06.30.67	
28	5.14.21.05	
29	5.13.77.78	
30	Rest Foot	303414
36	5.17.10.87	
42	Vise Handle	303415
47	5.18.28.28	
48	0.40.06.05	
49	0.15.07.01	



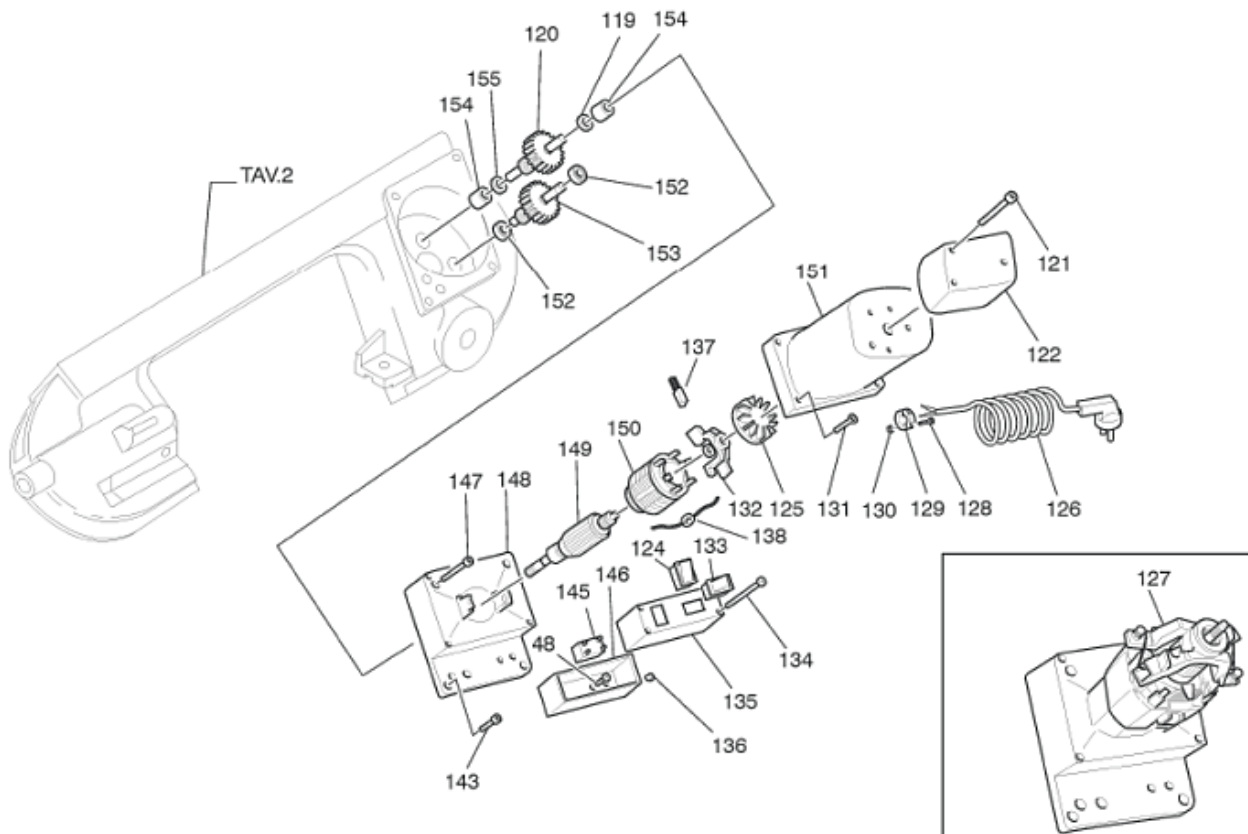
<u>Pos.</u>	<u>Description</u>	<u>Part #</u>
50	Gear group	303413
51	0.60.60.05	
52	Uni 7687 M4x6	
53	Blade tension index cover	303412
54	5.04.29.20	
56	0.15.01.49	
57	5.15.41.03	
58	0.40.05.11	
59	Drive wheel	303411
60	Uni 6592 Ø12	
61	Uni 7474 M12	
62	Uni 5588 M10	
63	5.00.15.58	
64	5.13.78.08	
65	0.15.51.49	
66	0.60.62.04	
67	0.15.51.16	
68	3.27.74.02	
69	5.18.17.36	
70	Uni 5923 M5x16	
71	0.10.20.05	303400
72	Uni 5933 M8x20	80521

<u>Pos.</u>	<u>Description</u>	<u>Part #</u>
73	5.12.40.47	
74	5.21.42.22	
75	Handwheel	303410
76	5.12.06.38	81938
77	0.59.06.24	303838
78	5.18.17.39	
79	0.08.02.59	
80	5.12.20.24	
82	5.10.05.04	
83	5.08.10.05	
84	Uni 5933 M5x25	
85	5.13.07.34	
87	0.40.05.13	
88	5.18.17.37	
89	5.87.10.48	
90	Trigger switch	303409
91	Uni 6592 Ø10"	
92	Pull handle	303408
93	5.14.20.79	
94	5.15.95.04	
95	0.17.99.01	



<u>Pos.</u>	<u>Description</u>	<u>Part #</u>
96	UNI 5731 M8x35	
97	7.13.07.43	303829
100	Uni 5721 M6	303836
101	Uni 1751 Ø6	43643
102	0.12.07.18	
103	Hand lever	303418
105	0.17.40.16	303833

<u>Pos.</u>	<u>Description</u>	<u>Part #</u>
106	0.12.90.04	
110	Ball bearing	303726
115	5.18.16.74	
116	5.10.00.64	
117	5.10.00.65	303830
118	5.13.07.71	303693



<u>Pos.</u>	<u>Description</u>	<u>Part #</u>
119	5.13.07.71	
120	Gear Group	303438
121	0,42,40,60	
122	Motor cover	303406
123		
124	Speed selector switch	303407
125	Motor fan	303405
126	5.87.10.81	
127	Complete motor	303442
128		
129	5.15.45.01	
130		
131	Uni 5931 M5x40	
132	5.85.00.05	
133	Power switch	303404
134	Uni 6954 P8x45	
135	5.18.25.17	
136	0.16.85.07	
137	Motor brushes	303394
138	Thermostat	303440

<u>Pos.</u>	<u>Description</u>	<u>Part #</u>
139		
140		
141		
142		
143	Uni 5931 M6x16	
144		
145	Diode	303441
146	5.18.28.23	
147	Uni 5931 M6x30	
148	5.18.25.09	
149	7.01.31.49	
150		
151	5.18.28.39	
152	Cage bearing	10X14X12
153	Gear group	303439
154	Cage bearing	HK0609B (6X10X9)
155	5.18.19.34	
156	5.18.19.35	
157	5.18.10.04	



### **Blade Types Available**

<b><u>Part #</u></b>	<b><u>Description</u></b>
303293	1/4 " x 1/2 " x .035" x 6 TPI Lexon Die Master
303295	1/4 " x 1/2 " x .035" x 14 TPI Lexon Die Master
303297	1/4 " x 1/2 " x .035" x 10-14 TPI Lexon Die Master
303299	1/4 " x 1/2 " x .035" x 6-10 TPI Lexon Die Master

***Please contact factory for current prices.***

### **ORDERING INFORMATION**

Parts are available for direct purchase from Dake or through a distributor. When placing a parts order, you will need to provide the part number, name of part, and model number. All parts shipped F.O.B. Factory in Grand Haven, MI.