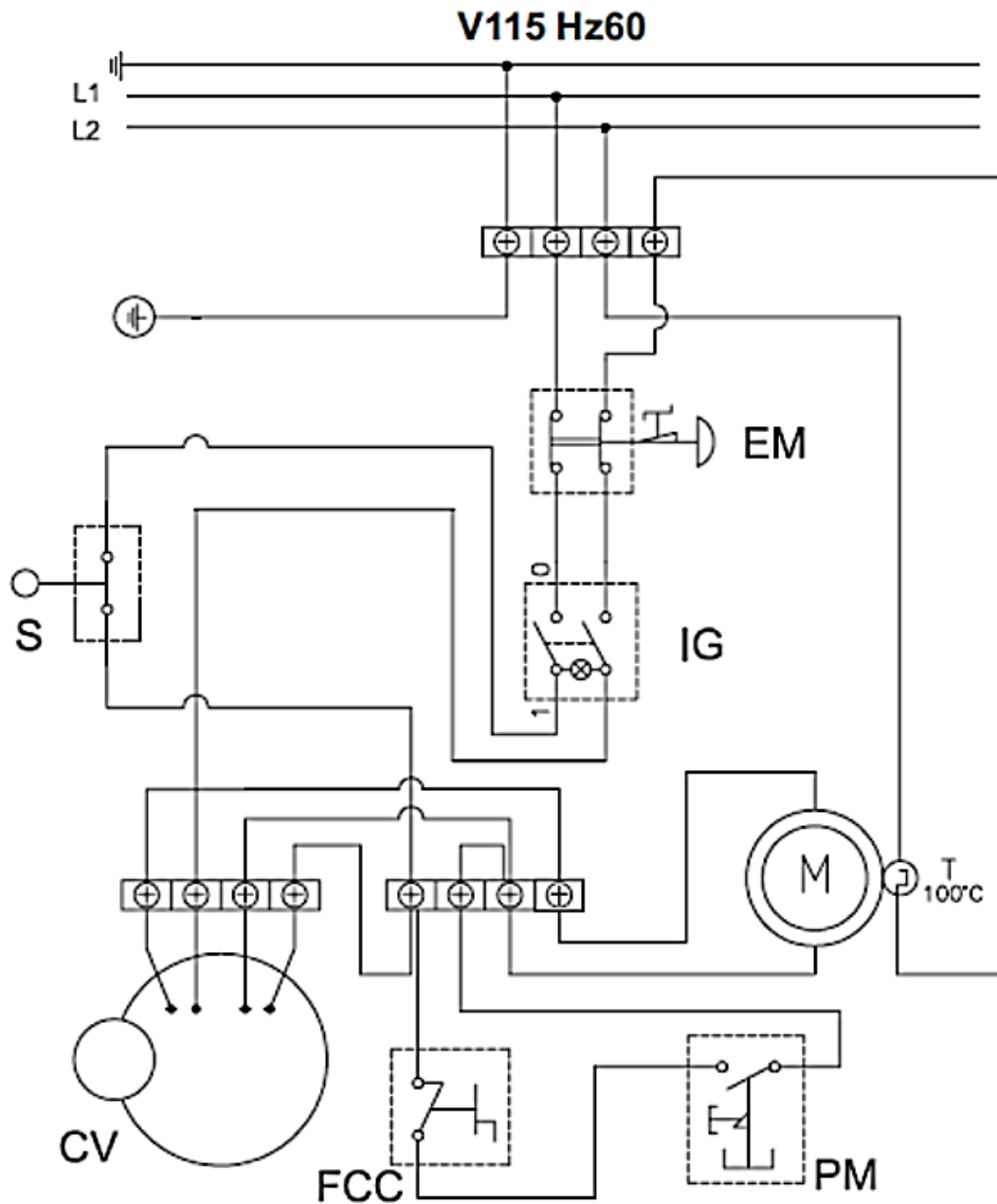


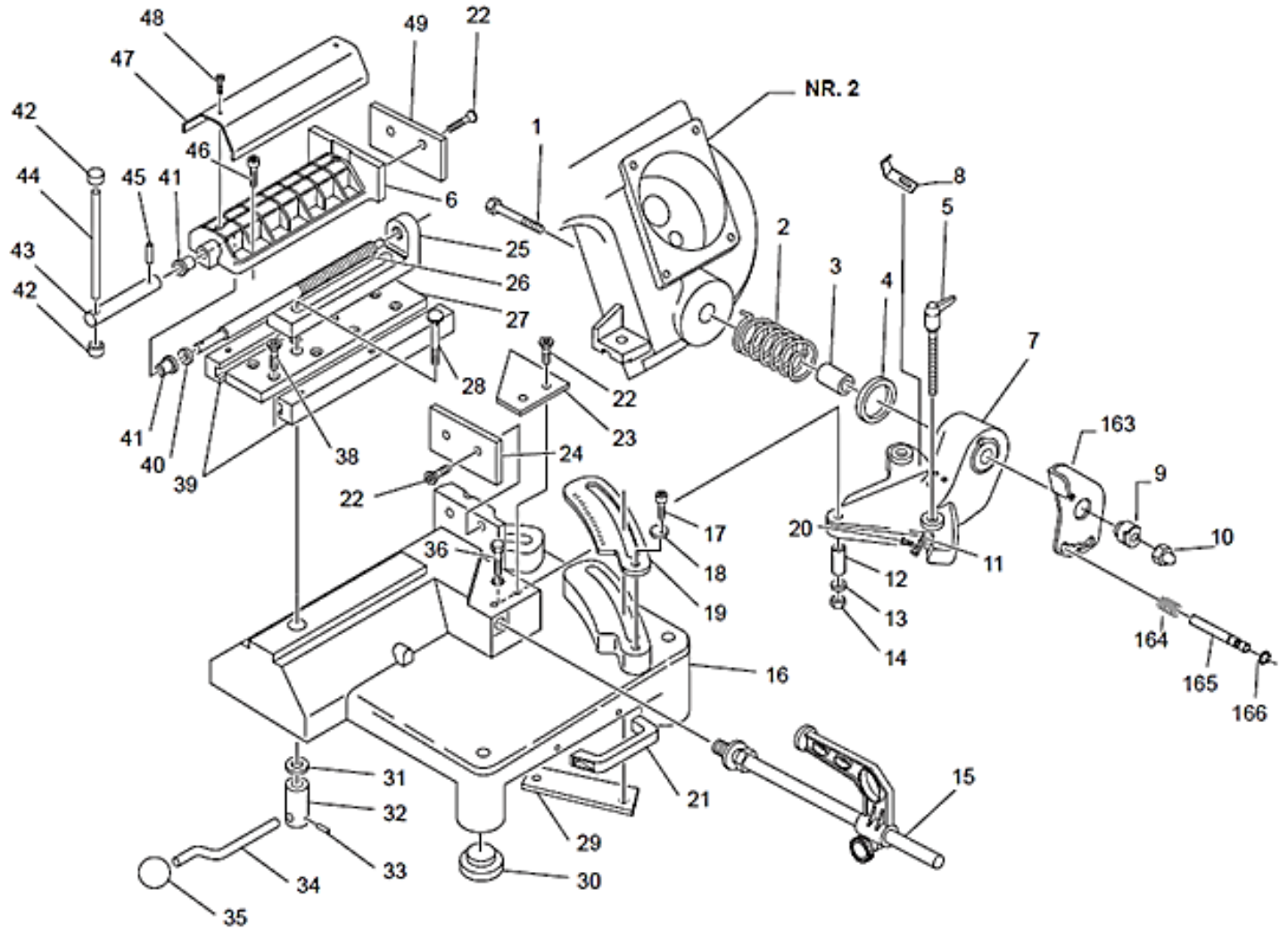
ELECTRICAL SCHEMATIC



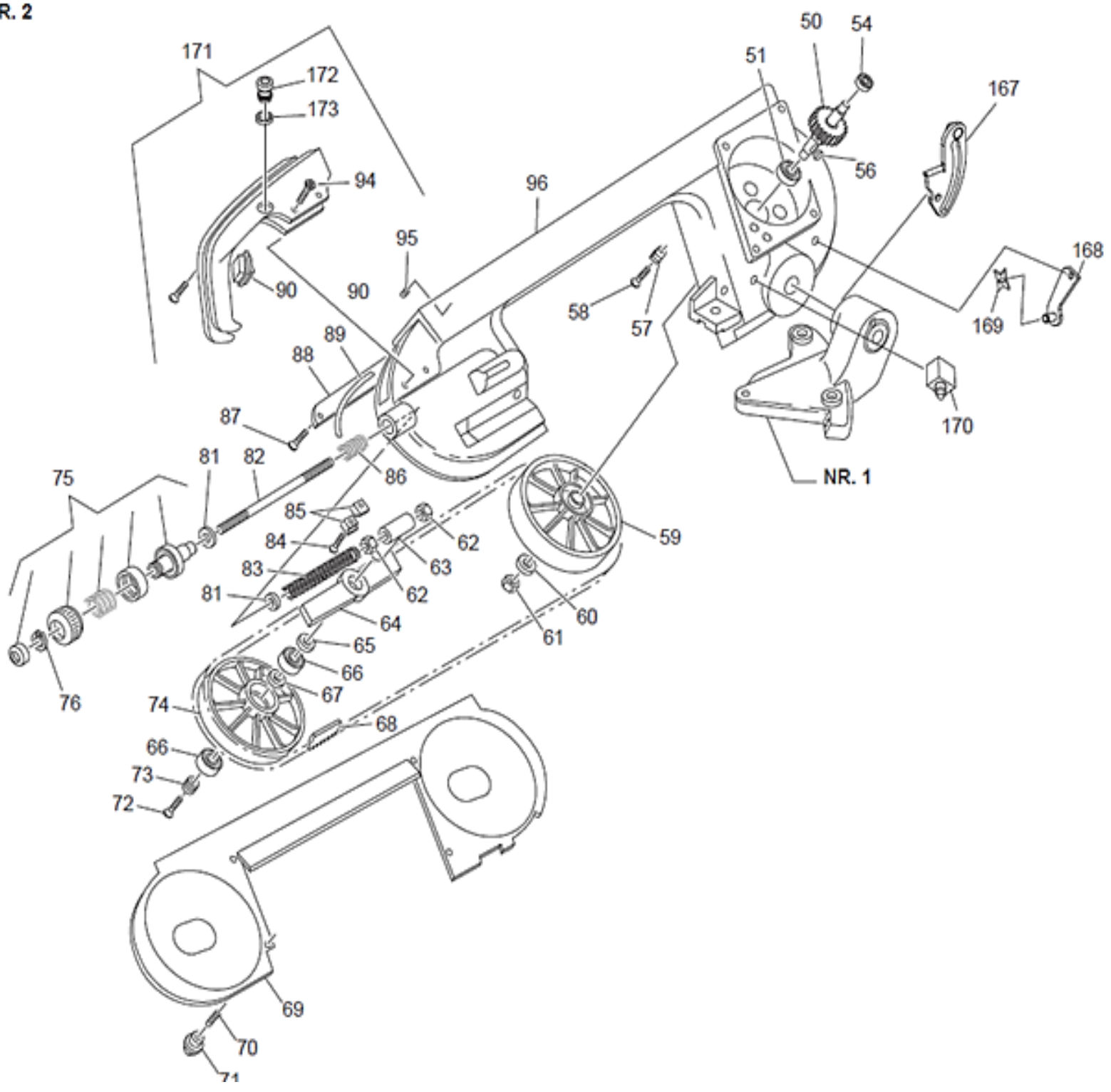
EM	Emergency stop button
IG	Main switch
S	Limit switch
CV	Speed changer
PM	Run button
M	Motor MF
T	Thermal circuit breaker
FCC	End of cut micro switch

EXPLODED VIEWS & PART LIST

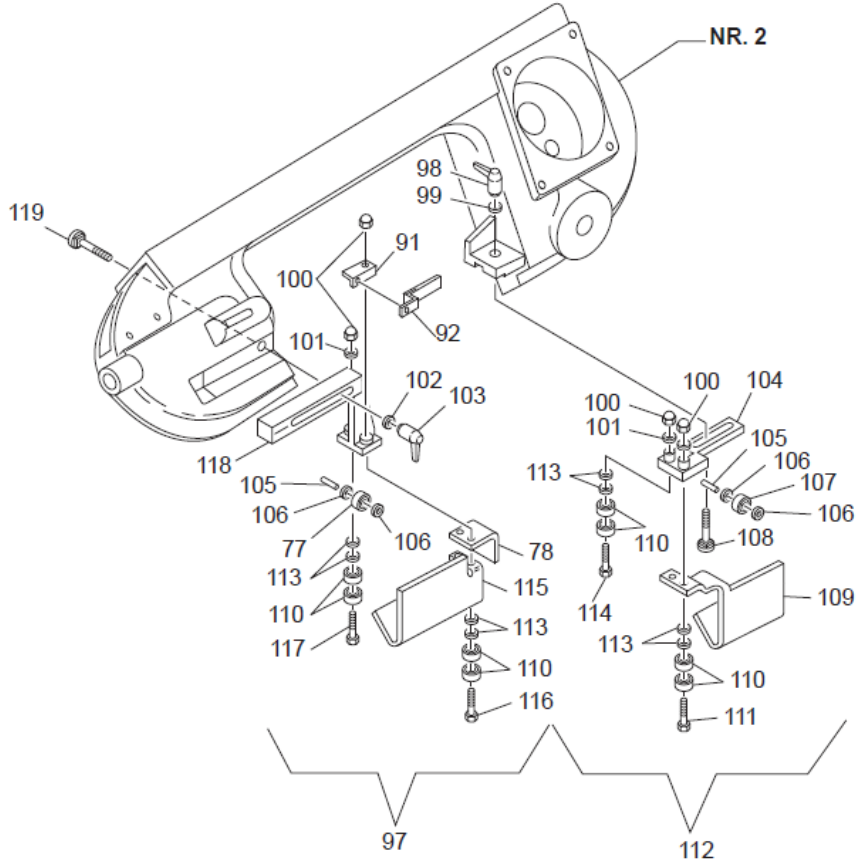
NR. 1



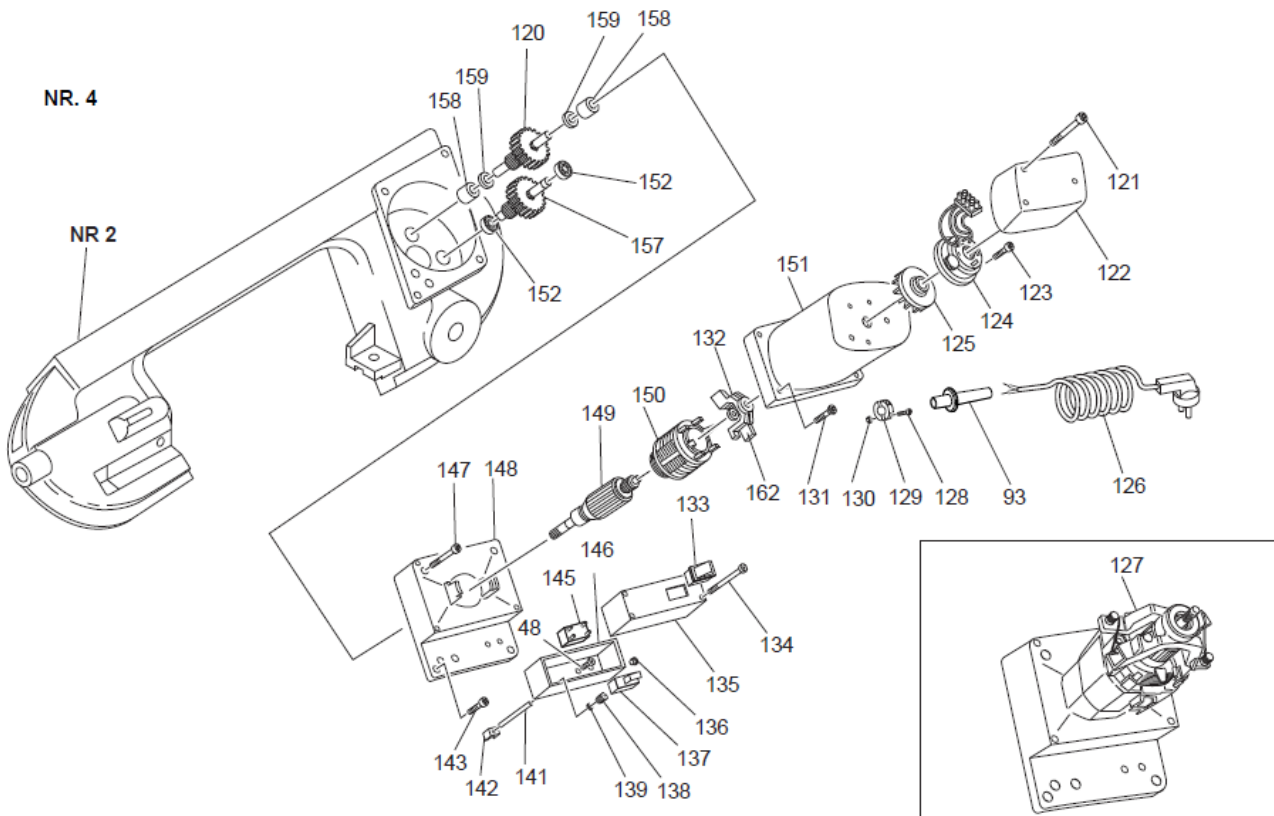
NR. 2



NR. 3



NR. 4



<u>Pos.</u>	<u>Description</u>	<u>DAKE Part #</u>
1	UNI 5737 M14x100	
2	5.08.01.81	
3	0.06.30.40	
4	5.12.40.50	
5	0.14.70.06	
-	0.45.08.80	
6	5.04.29.22	
7	5.13.81.02	
8	Support Bracket	303403
9	5.17.10.94	
10	UNI 5721 M14	
11	5.15.95.13	
13	0.12.07.18	
14	UNI 7473 M8	
15	Stock Stop	303788
16	5.13.38.29	
17	UNI 5931 M6x16	
18	5.12.40.29	
19	5.40.40.12	
20	0.40.29.05	
21	Hand Grip	303402
22	UNI 5933 M8x20	
23	5.13.77.96	
24	5.15.26.36	
25	5.13.08.34	
26	5.10.03.29	
27	5.13.03.93	
28	UNI 5732 M12x100	
29	5.13.77.78	
30	Rest Foot	303414
31	5.12.40.56	
32	5.17.10.56	
33	0.15.26.30	
34	5.14.20.80	
35	Handle for Vise Lock	303401
36	UNI 5739 M8x40	
37		
38	UNI 5933 M10x30	
39	5.13.03.94	
40	5.12.40.48	
41	0.06.30.39	
42	Lever End Cap	303437
43	5.13.07.44	
44	5.14.20.23	
45	0.15.26.31	
46	UNI 5961 M6x25	
47	5.18.28.29	
48	0.40.05.13	
49	5.15.26.37	

<u>Pos.</u>	<u>Description</u>	<u>DAKE Part #</u>
50	Gear group	303436
51	0.60.60.05	
54	0.58.62.00	
56	0.15.01.39	
57	5.15.41.03	
58	0.40.05.11	
59	Drive wheel	303411
60	UNI 6592 Ø12	
61	UNI 7474 M12	
62	UNI 5588 M10	
63	5.00.15.58	
64	5.13.78.08	
65	0.15.51.49	
66	0.60.62.04	
67	0.15.51.16	
68		
69	Blade Guard	303427
70	UNI 5923 M5x16	
71	Cover Wing Nut	303400
72	UNI 5933 M8x20	
73	5.12.40.47	
74	5.21.42.22	
75	Blade Tensioning Group	303430
76	UNI 1751 Ø16	
77	Bearing	303838
78	5.18.17.39	
81	UNI 6592 Ø10	
82	5.10.05.04	
83	5.08.10.05	
84	UNI 5933 M5x25	
85	5.13.07.34	
86	0.08.02.59	
87	0.40.05.13	
88	5.18.17.37	
89	5.87.08.87	
90	"ON" Switch	303431
91	5.18.19.34	
92	Moveable Blade Guard	5181938
94	0.40.05.03	
95	0.17.99.01	
96	5.04.29.21	
97	Blade Guide - Front	7132549
98	1.14.70.27	
99	0.12.07.06	
100	UNI 5721 M6	
101	UNI 1751 Ø6	
102	0.12.07.18	
103	0.14.70.29	
104	5.13.07.74	

<u>Pos.</u>	<u>Description</u>	<u>DAKE Part #</u>
105	Roll Pin	303833
106	Special Washer	303834
107	0.59.06.34	
108	UNI 5732 M6x20	
109	5.18.19.36	
110	Ball bearing	303726
111	5.10.00.75	
112	Blade Guide - Rear	7132548
113	5.12.06.38	
114	5.10.00.74	
115	5.18.19.37	
116	Bearing Locking Screw	303831
117	5.10.00.65	
118	Guide Bar	303693
119	UNI 5731 M8x30	
120	Gear	
121	0.42.40.60	
122	Motor cover	303406
123	0.42.07.69	
124	7.82.01.53	
125	585.01.11	
126	5.87.10.81	
127	Complete motor	303433
129	5.15.45.01	
131	0.40.04.00	
132	5.85.00.06	
133	0.80.23.16	
134	UNI 6954 P8x45	
135	5.18.25.04	

<u>Pos.</u>	<u>Description</u>	<u>DAKE Part #</u>
136	0.16.85.07	
137	Microswitch	303434
138	5.08.10.08	
139	0.16.85.13	
141	5.13.08.33	
142	5.13.08.06	
143	UNI 5931 M6x16	
146	5.18.29.31	
147	UNI 5931 M6x40	
148	5.18.25.05	
149	7.01.31.60	
151	5.18.28.39	
152	0.58.62.00	
157	Gear	303435
158	Cage Bearing	HK 1212
159	0.12.40.26	
162	Motor Brushes	303395
163	Speed Selection Bracket	303429
164	5.08.01.29	
165	5.17.10.90	
166	5.13.09.63	
167	Cam Support	303399
168	Throttle Support	303398
169	Throttle Plate	303397
170	End-Run Microswitch	303396
171	Head Handle Assembly (Items 90, 94, 172 & 173)	303428
172	0.80.60.29	
173	5.12.40.91	
N/A	Idle Wheel Assembly	303426

-	Blade	¼" x ½" x .035" x 6 TPI Lenox Die Master	303293
-	Blade	¼" x ½" x .035" x 14 TPI Lenox Die Master	303295
-	Blade	¼" x ½" x .035" x 10-14 TPI Lenox Die Master	303297
-	Blade	¼" x ½" x .035" x 6-10 TPI Lenox Die Master	303299

Please contact factory for current prices.

ORDERING INFORMATION

Parts are available for direct purchase from Dake or through a distributor. When placing a parts order, you will need to provide the part number, name of part, and model number. All parts shipped F.O.B. Factory in Grand Haven, MI.