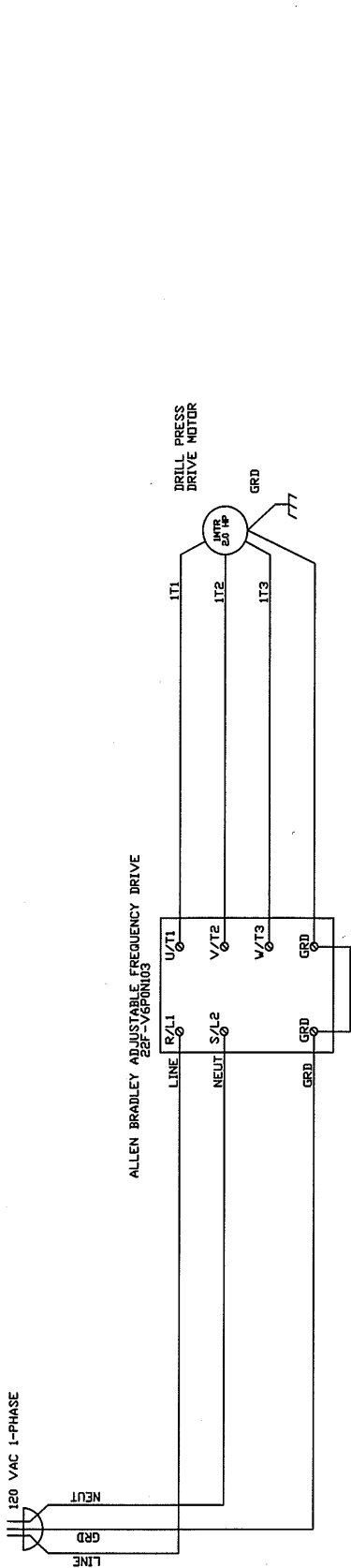


ELECTRICAL DIAGRAM

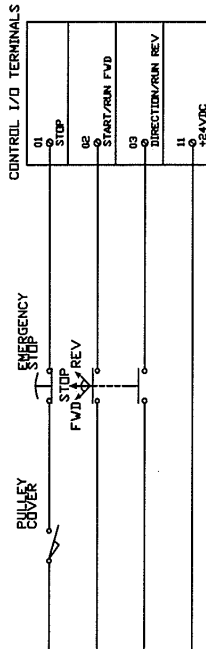


REFER TO UNIT OPERATIONS MANUAL FOR FURTHER INSTALLATION AND PROGRAMMING DETAILS

PARAMETER/NUMBER SETTING

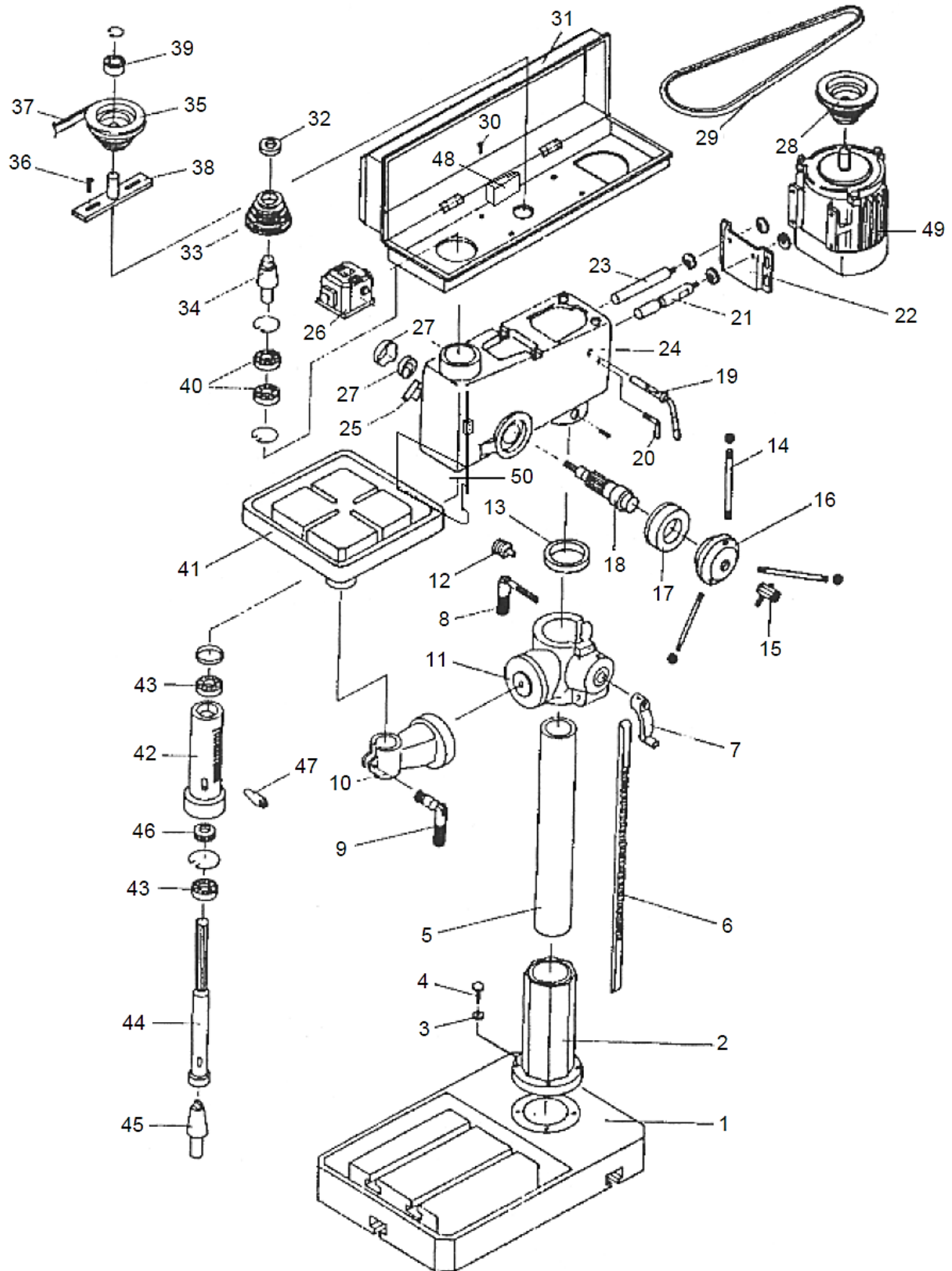
PI0	MOTOR NAMEPLATE VOLTS	230
PI2	MOTOR NAMEPLATE HERTZ	60
PI3	MOTOR OVERLOAD CURRENT	6.0
PI4	MINIMUM FREQUENCY	10.0
PI5	MAXIMUM FREQUENCY	90
PI6	START SOURCE	2
PI7	STOP MODE	0
PI8	SPEED REFERENCE	0
PI9	ACCELERATION TIME 1	1.0
PI10	DECELERATION TIME 1	1.0
PI11	MOTOR OVERLOAD RETENTION	0
PI2	RESET TO DEFAULTS	0

SET THE FOLLOWING PARAMETERS TO SHOWN VALUE ALL OTHER PARAMETERS REMAIN AT FACTORY DEFAULT SETTING



DAKE CORPORATION
GRAND HAVEN, MICHIGAN 49417
DAKE MODEL SB-25 DRILL PRESS 120 VOLT 1-PHASE
DAKE DRAWING 87384 09/05/2013

EXPLODED VIEWS & PART LISTS

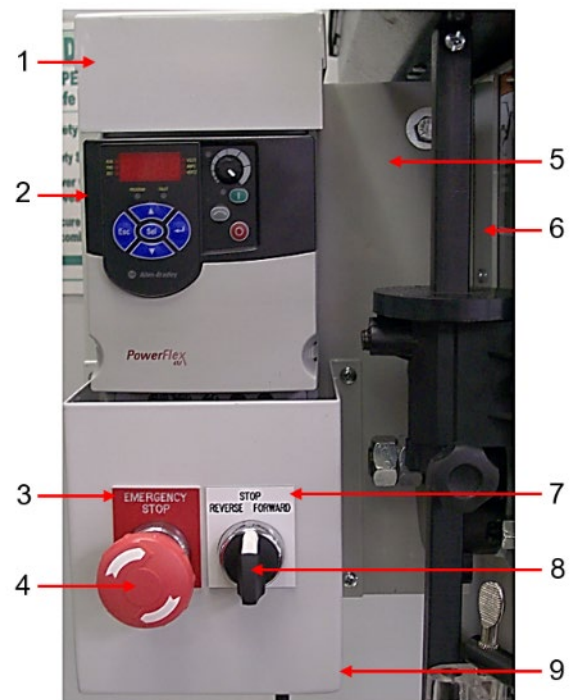


<u>Item No.</u>	<u>Part Description</u>	<u>Part No.</u>
1	Base	301041
2	Flange	301043
3	Spring Washer (4x)	13mm
4	Screw (M13 x 16mm L)	300999
5	Column	301045
6	Rack	301046
7	Handle	301048
8	Clamp Bolt	301049
9	Clamp Bolt	301051
10	Table Arm	301053
11	Table Bracket	301054
12	Worm	301056
13	Collar	301058
14	Feed Handle (3x)	301059
15	Lock Handle	301070
15A	Lock Screw	302818
16	Feed Head	301069
17	Spindle Scale	301072
18	Feed Shaft	301074
19	Belt Adjust Handle	301076
20	Wing Bolt	301078
21	Road – A	301080
22	Motor Plate	301081
23	Road – B	301083
24	Head	301084
25	Spring Base	N/A
26	Switch	301062
27	Spring & Cap	301064
28	Motor Pulley	301065
29	Belt	301066
30	Screw (4x)	300998
31	Pulley Cover	301068
32	Insert Pulley Nut	301086
33	Spindle Pulley	301087
34	Insert Pulley Shaft	302217
35	Middle Pulley	301090
36	Screw & Spring (2x)	301092
37	Belt A23	301093
38	Middle Pulley Shaft	301094
39	Bearing 6203Z	300987

<u>Item No.</u>	<u>Part Description</u>	<u>Part No.</u>
40	Bearing 6203Z	300987
41	Table	301096
42	Quill	301097
43	Bearing	300990
43	Bearing	300989
44	Spindle	301100
45	Arbor	301102
46	Seal	N/A
47	Wedge	301103
48	Belt Cover Interlock Switch	300992
49	Motor	300994
50	Plexiglass Chuck Guard	300995
N/A	Chuck (16mm)	301966
N/A	Key (16mm)	301967

Additional Parts:

<u>Item No.</u>	<u>Part Description</u>	<u>Part No.</u>
1	Top Cover	87377
2	Drive Unit	302704
3	E-Stop Name Plate	301904
4	E-Stop Button	716538
5	Back Mounting Plate	87378
6	Bracket	87382
7	Selector Name Plate	302746
8	Selector Switch	302730
9	Switch Mounting Box	87379



Parts not shown:

Part Description	Part No.	Qty.
Cord set with Plug	300529	1
Motor Grommet	300540	1
Contact Block N.O.	301782	2
Metal Latch	301785	1
Cable 4 Wire	302683	1
Bolt for Mounting Bracket (5/16"-18 x 3/4")	43314	2
Washer for Mounting Bracket (5/16" Flat)	43632	2
Lock Washer for Mounting Bracket (5/16")	43644	2
Nut for Mounting Bracket (5/16"-18, heavy)	43911	2
Top Mounting Screw for Top Bracket (#10-24 x 24)	43847	2
Nut for Top Mounting Screw (#10-24)	43905	2
Self-tapping Screw	43881	7
Connector Cord	75151	2
Conduit Locknut (1/2")	75257	2

Please contact factory for current prices.

ORDERING INFORMATION

Parts are available for direct purchase from Dake or through a distributor. When placing a parts order, you will need to provide the part number, name of part, and model number. All parts shipped F.O.B. Factory in Grand Haven, MI