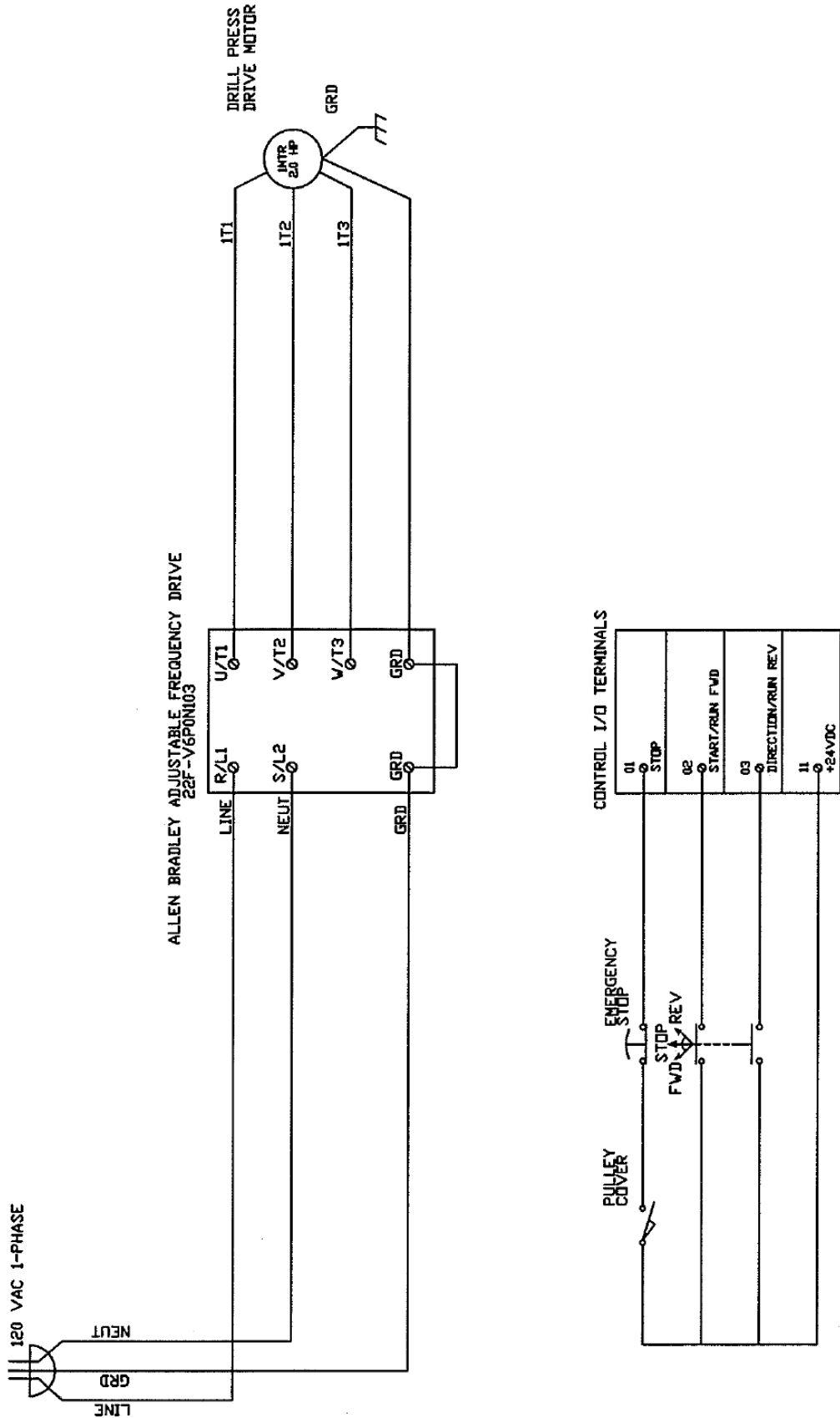
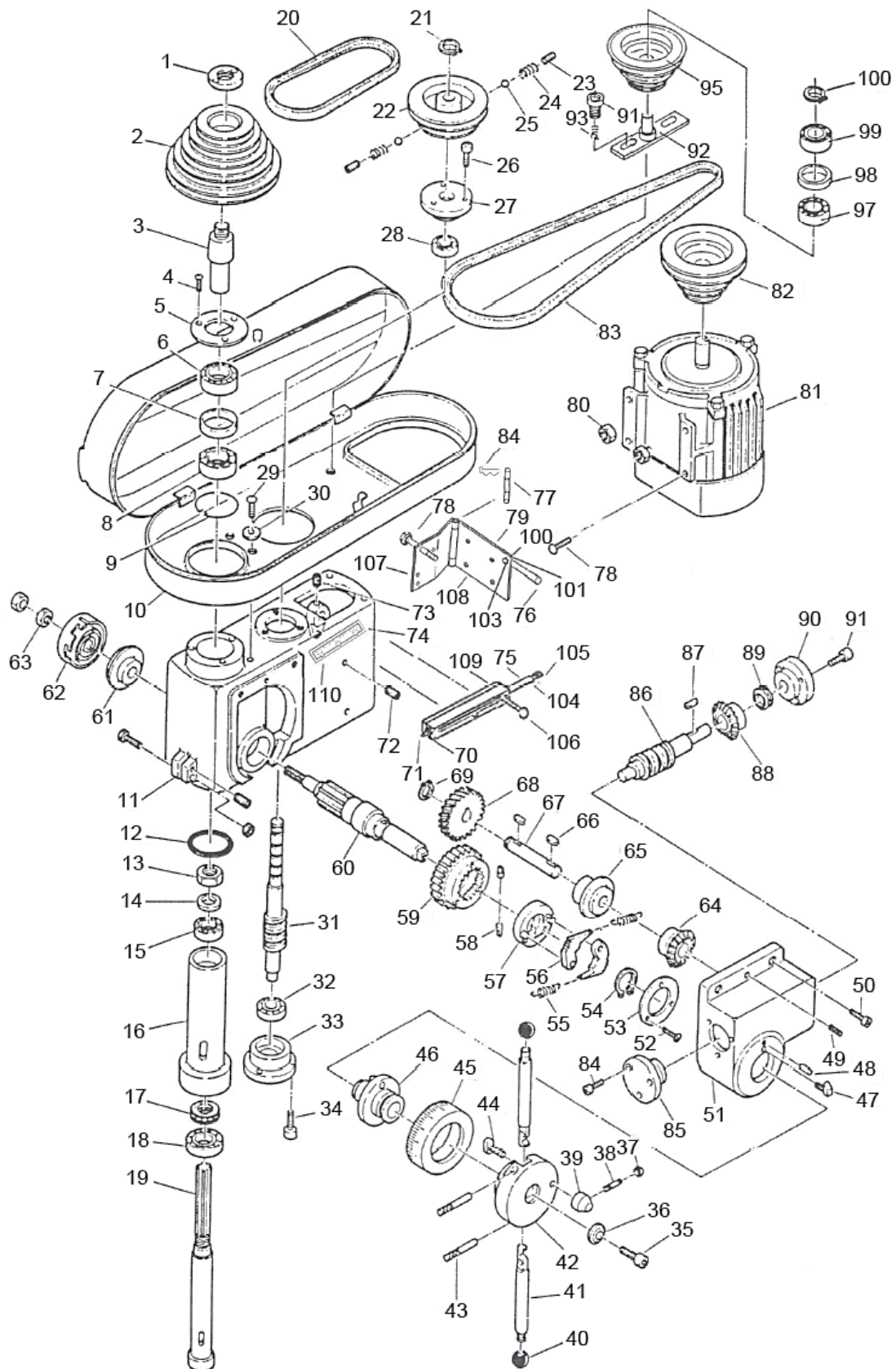


ELECTRICAL DIAGRAMS



EXPLODED VIEWS & PARTS LISTS

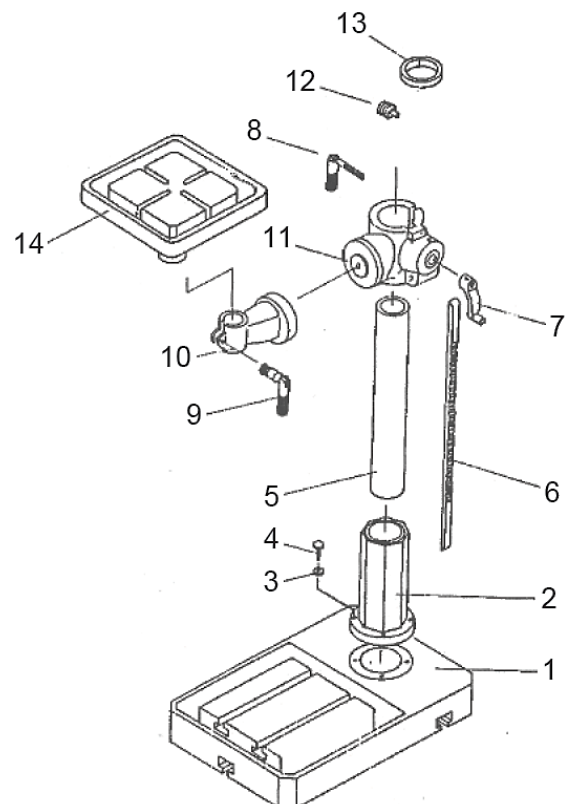


Item No.	Part Description	Part No.
1	Nut	
2	Spindle Pulley	301088
3	Insert Pulley Shaft	302218
4	C-Ring	
5	Ring	
6	Bearing 6203Z	300987
7	Ring	
8	Bearing	
9	Snap Ring	
10	Pulley Cover	303889
11	Head	303675
12	Rubber Pad	
13	Nut	
14	Nut	
15	Bearing 6006Z & 6208Z	303860 & 303861
16	Quill (2.42")	303859
17	Thrust Bearing	303862
18	Bearing	303863
19	Spindle	301099
20	Belt	301093
21	Snap Ring	
22	Pulley	
23	Set Screw	
24	Spring	
25	Ball	
26	Bolt	
27	Cover	
28	Bearing	
29	Button Head Screw	
30	Washer	
31	Worm Shaft (Vertical)	
32	Bearing	
33	Cover	
34	Bolt	
35	Bolt	
36	Washer	
37	Lock Handle	
38	Lock Handle	
39	Lock Handle	

Item No.	Part Description	Part No.
40	Knob	
41	Handle	303872
42	Handle Base	303876
43	Pin	
44	Lock Screw	
45	Scale Sleeve	301071
46	Clutch	
47	Block	
48, 49	Pin	
50	Hex Screw	
51	Gear Box	
52	Screw	
53	Fixed Plate	
54	C-Ring	
55	Spring	
56	Clutch Claw	
57	Clutch Claw Base	
58	Pin	
59	Gear Clutch	
60	Pinion Shaft	
61	Spring Cap Base	
62	Spring & Cap	
63	Nut	
64	Gear Bevel	
65	Gear Bevel Base	
66, 67	Key	
68	Gear	
69	C-Ring	
70	Nut	43938
71	Set Screw	302761
74	Can	
75	Adjusting Rod	87391
76	Handle	554
77	Hinge Pin	87388
78	M14-2.0 x 150mm	302757
81	Motor	300996
82	Motor Pulley	302749
83	Belt	302748
84	Hitch Pin	302760

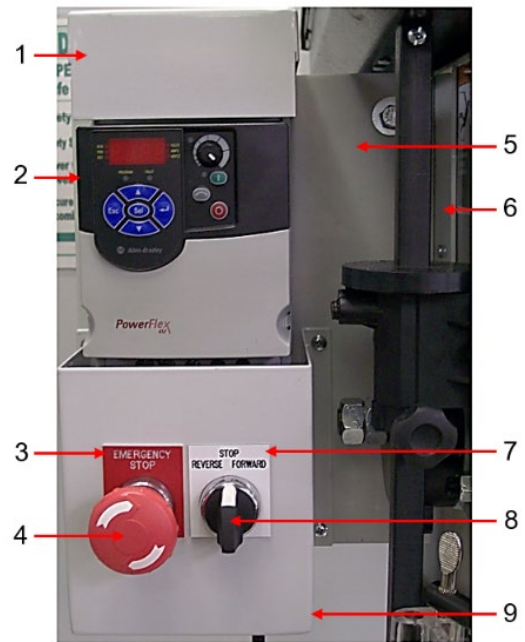
Item No.	Part Description	Part No.
86	Worm Shaft (Horizontal)	
87	Key	
88	Bevel Gear	
89	Bearing	
90	Worm Shaft Base	
91	Screw	
92	Pulley Holder	
93	Spring	
94	Bolt	
95	Pulley	301089
97	Bearing	
98	Spacer	
99	Bearing	
100	Handle Washer & Snap Ring	43632
101	Nylock Nut	300827
103	Handle Bolt	43317
104	Bolt	43330
105	Locknut	43937
106	Handle with Ball	300702
107	Hinge Plate	87386
108	Motor Mounting Plate	87387
109	Belt Tension Adjuster	87390
110	Range Change Label	87402

Item No.	Description	Part No.
1	Base	301040
2	Flange	301042
3	Spring Washer (4x)	13 mm
4	Screw	300999
5	Column	301044
6	Rack	301047
7	Handle	301048
8	Clamp Bolt	301049
9	Clamp Bolt	301051
10	Table Arm	301052
11	Table Bracket	301055
12	Worm	301056
13	Collar	301057
14	Feed Handle (3x)	301059



Additional Parts:

Item No.	Part Description	Part No.
1	Top Cover	87377
2	Drive Unit	302704
3	E-Stop Name Plate	301904
4	E-Stop Button	716538
5	Back Mounting Plate	87378
6	Bracket	87382
7	Selector Name Plate	302746
8	Selector Switch	302730
9	Switch Mounting Box	87379



Parts not shown:

Part Description	Part No.	Qty.
Cord set with Plug	300529	1
Motor Grommet	300540	1
Contact Block N.O.	301782	2
Metal Latch	301785	1
Cable 4 Wire	302683	1
Bolt for Mounting Bracket (5/16"-18 x 3/4")	43314	2
Washer for Mounting Bracket (5/16" Flat)	43632	2
Lock Washer for Mounting Bracket (5/16")	43644	2
Nut for Mounting Bracket (5/16"-18, heavy)	43911	2
Top Mounting Screw for Top Bracket (#10-24 x 24)	43847	2
Nut for Top Mounting Screw (#10-24)	43905	2
Self-tapping Screw	43881	7
Connector Cord	75151	2
Conduit Locknut (1/2")	75257	2

Please contact factory for current prices.

ORDERING INFORMATION

Parts are available for direct purchase from Dake or through a distributor. When placing a parts order, you will need to provide the part number, name of part, and model number. All parts shipped F.O.B. Factory in Grand Haven, MI