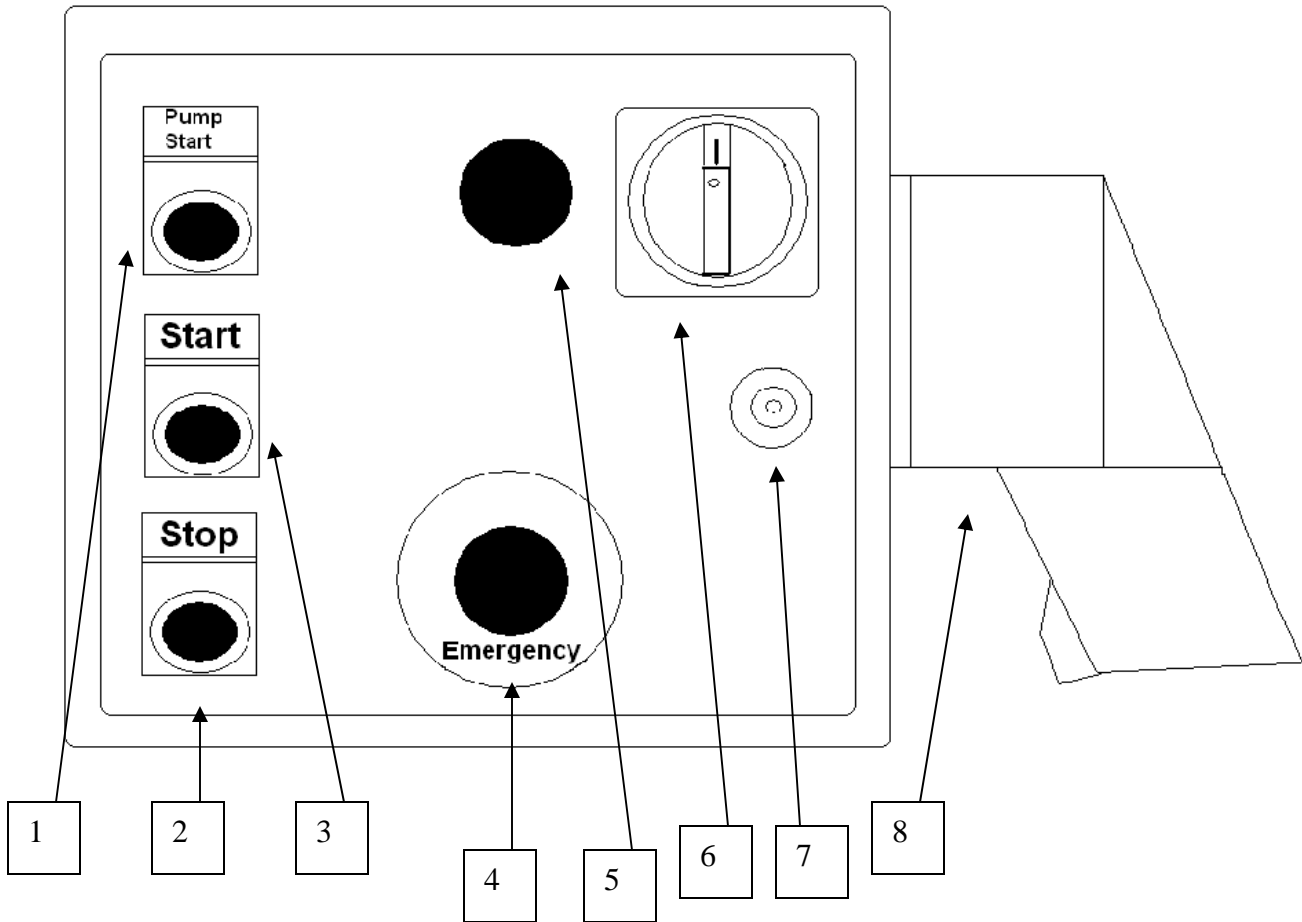
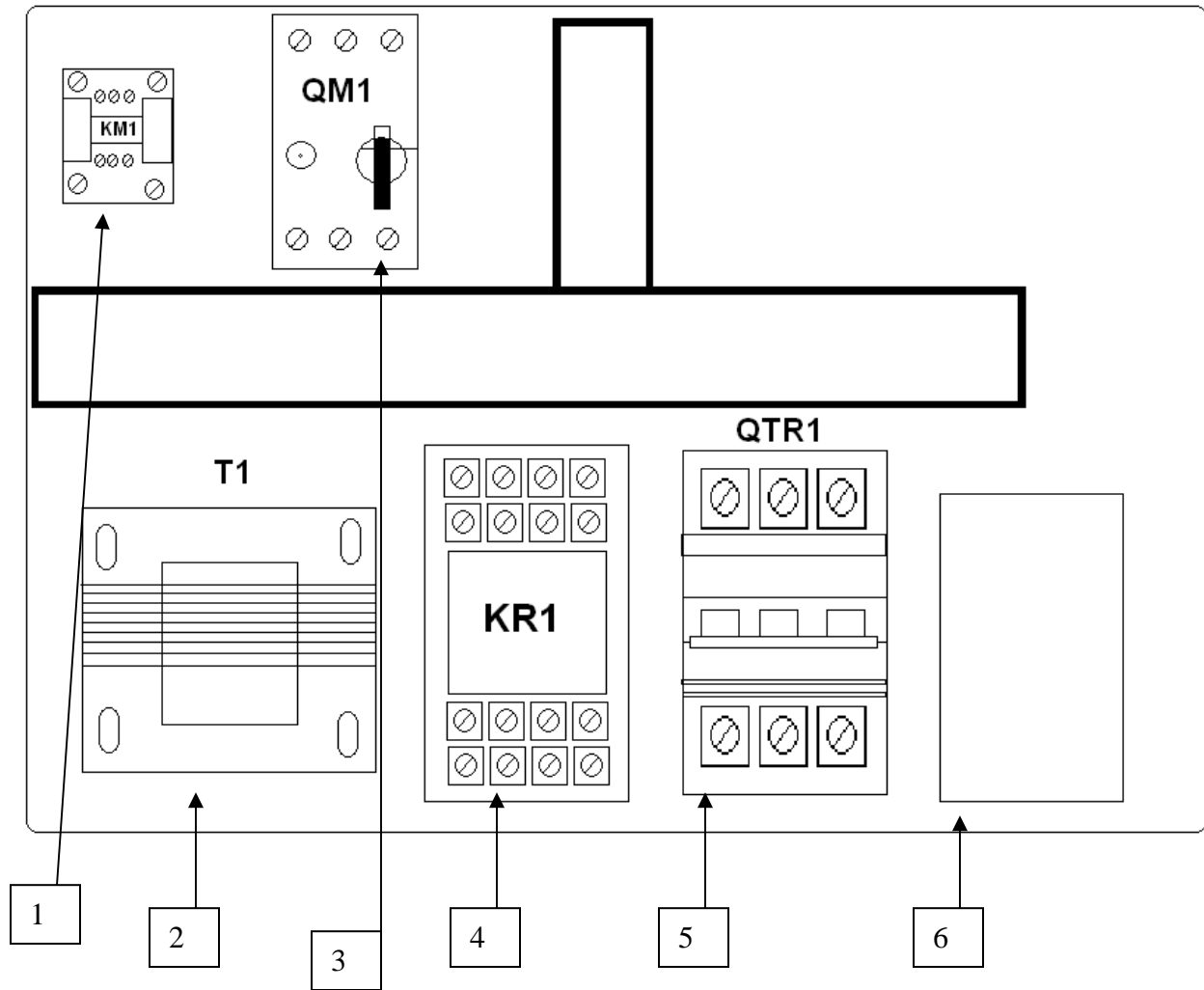


## Electrical box Parts breakdown



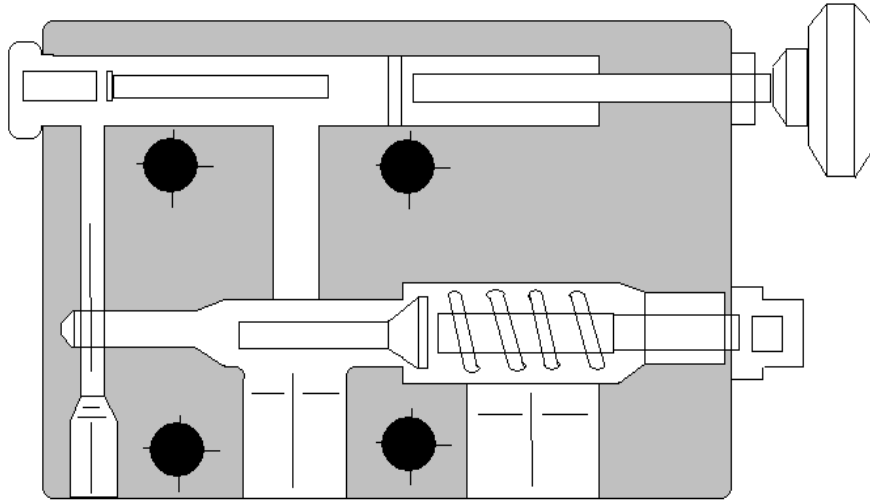
Item #	Part Name	Part number	Qty.
1	Pump Start button	716542	1
2	Stop button	716539	1
3	Start button	716556	1
4	Emergency button	716538	1
5	Power light	300298	1
6	Main power switch	302169	1
7	Elect. Box lock	300628	1
7A	Door key	80511	
8	Female plug		1
N/A	Male plug	301547	1
N/A	Electrical box w/ all components	300387	1
N/A	Electrical box w/ no components	300389	1
N/A	Power Switch Shaft	302729	

## Electrical box components parts



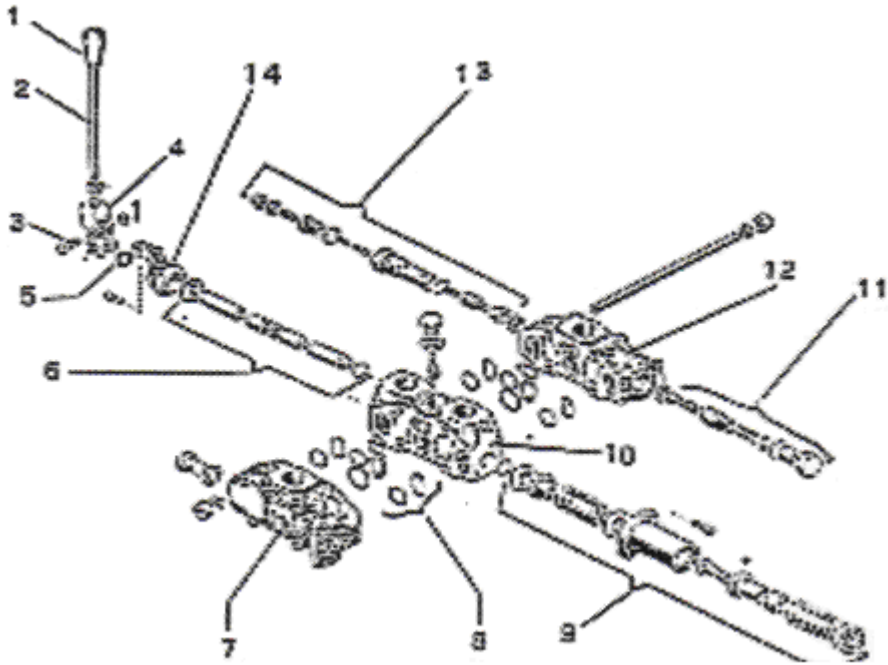
Item #	Part Name	40 Ton	70 Ton	100 Ton	150 Ton	Qty
1	Contactor					1
2	Transformer	300842	300842	300842		1
3	Overload 220 volt	302187	302187	302187		1
3	Overload 440 volt	302189	302189	302188		1
3A	N.O. contact block	302192	302192	302192		1
4	Relay	72300000	72300000	72300000		1
5	Fuse block	300843	300843	300843		1
5B	Fuse 2 amp	77523	77523	77523		3
6	Terminal block ground					2
6A	Terminal block black					3
	On-Off Switch Body	302728	302728	302728		1

## 2.6 Exchange valve



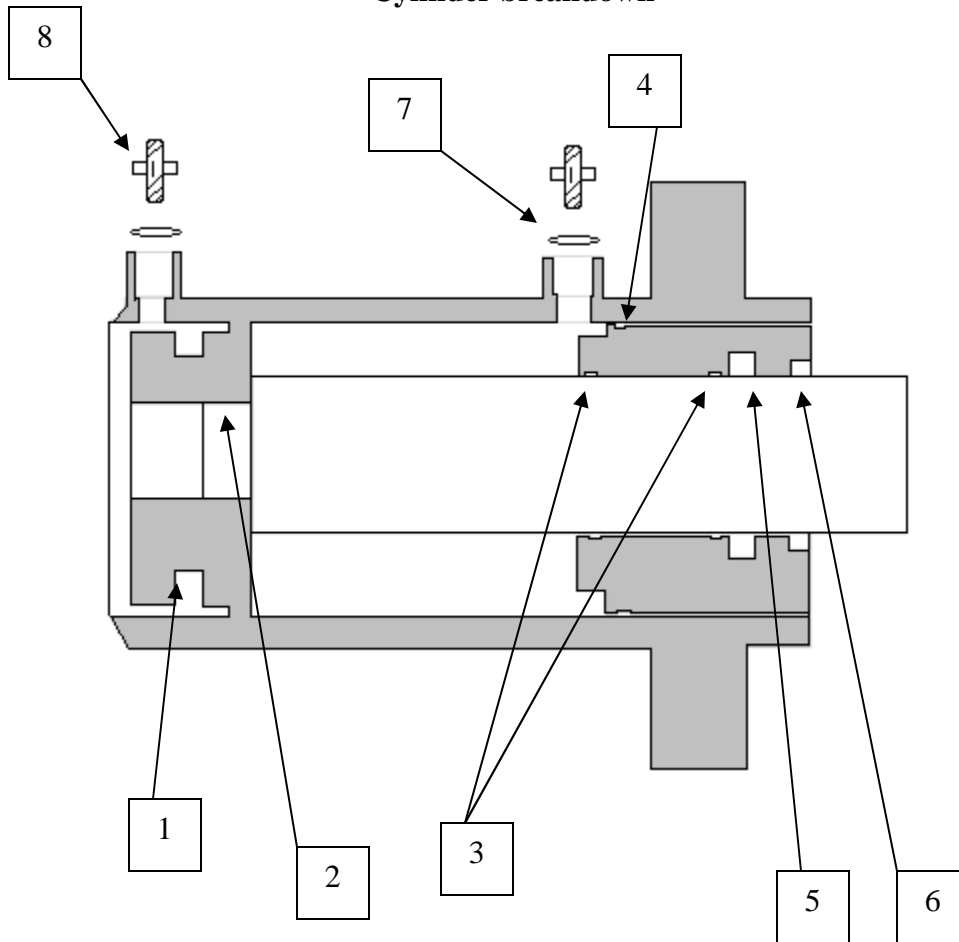
Item #	Part Name	Part # 40 Ton	Part # 70 Ton	Part # 100 Ton	Part # 150 Ton	Qty
1	Complete relief valve	300178	300178	300178		1
N/A	O-ring kit spring washer					1
N/A	Valve handle	301393	301393	301393		1

### 2.5 Distributor section



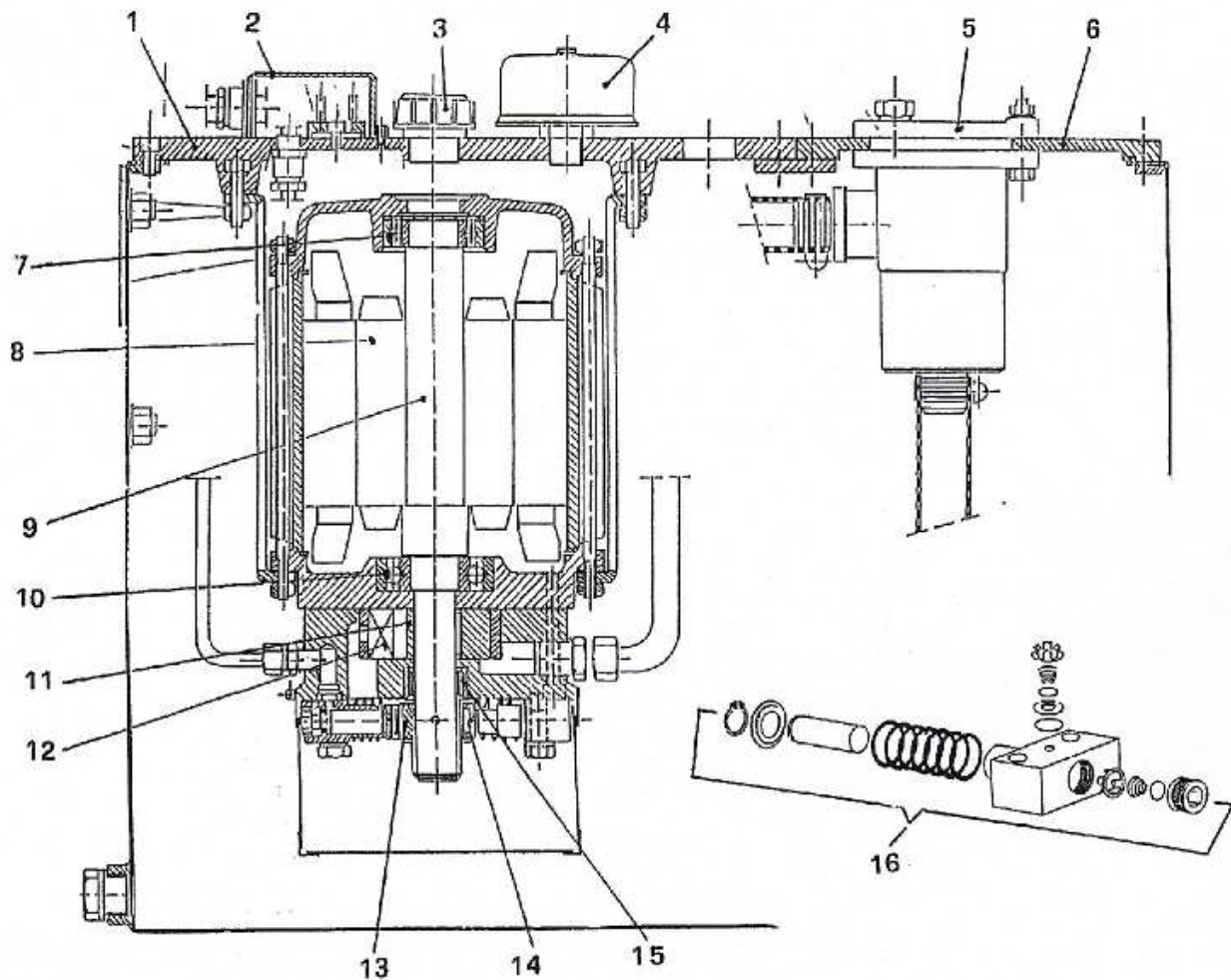
Item #	Part Name	Part number	Qty
N/A	Complete valve assembly	300179	1
1, 2, 3, 4, 5	Knob lever pin fork powder scraper	302211	1
6, 9, 10	Shaft group cap group main body	302210	1
Not shown	Relief valve	300852	1
7	Cover Body	302209	1
8	Gasket Set	300886	1
11, 12, 13	Back valve body entry collector body max valve	302208	1
1 & 2	Lever and knob only	302341	1

### Cylinder breakdown



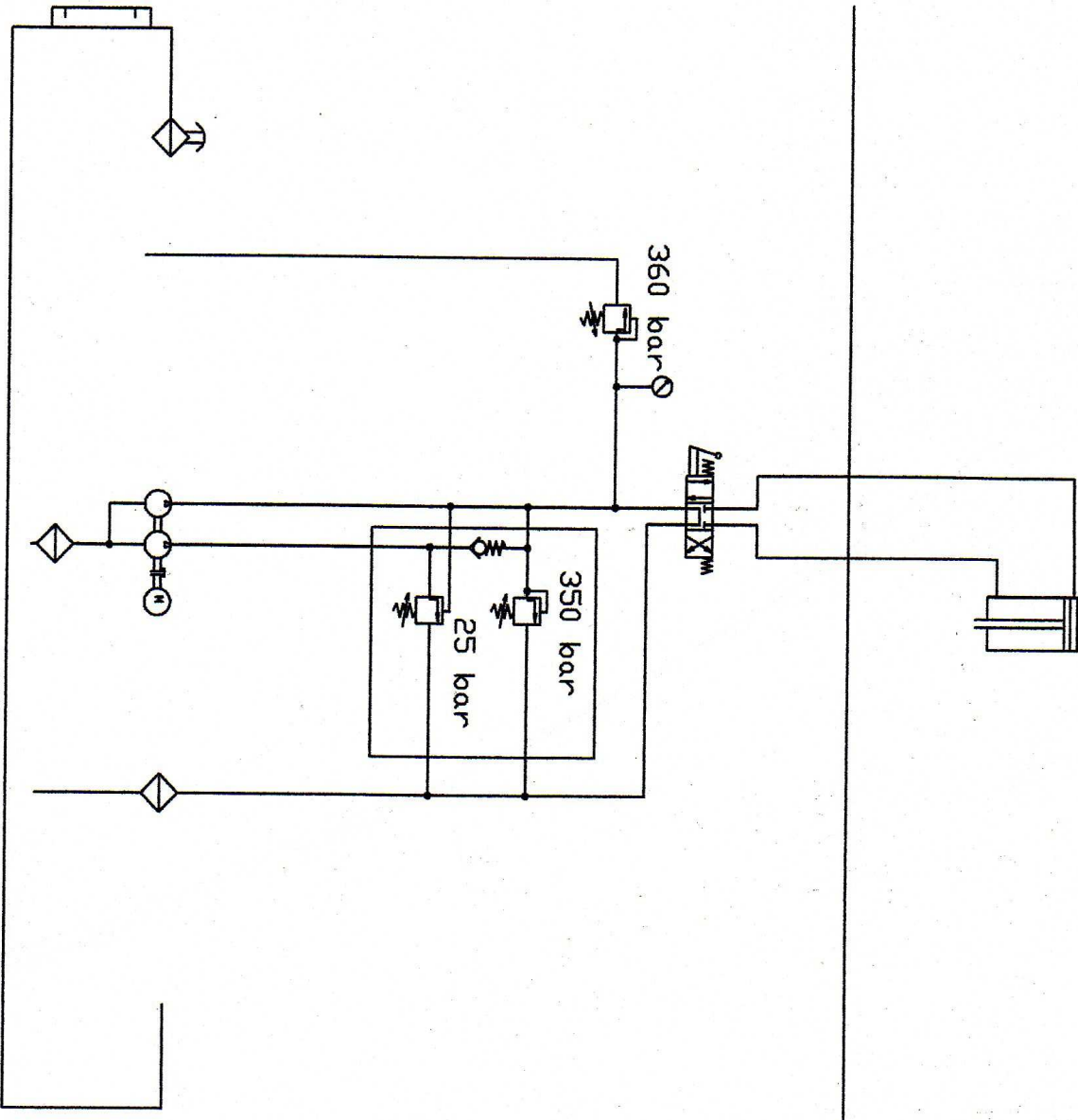
Item #	Part Name	Part# 40 Ton	Part# 70 Ton	Part# 100 Ton	Part# 150 Ton	Qty
1	Piston Gasket	300609	301195	301189		1
2	Piston O-ring	300610	301196	301186		1
3	Head guide rings	300647	301197	301187		1
4	Head o-ring	300648	301198	301188		1
5	Head gasket	300649	301199	301185		1
6	Head scraper	300650	301200	301184		1
N/A	Repair kit	716791	716790	716789		
7	Washer	Washer comes with fitting				2
8	Hose fitting top	300890	300890	300890		2
8A	Hose fitting bottom	301390	301390	301390		2
	Complete cylinder	300698	300642	SS100C00		1
Not shown	Gauge	300359	300360	300359		1
Not shown	Hydraulic hose B port	300382	300382			1
Not shown	Hydraulic hose A port	300383	300383			1
Not shown	Eye bolt	301880	301880	301880		1
Not shown	Nose piece bolt	300793	300793	300793		1

## 2.4 Hydraulic pumping unit

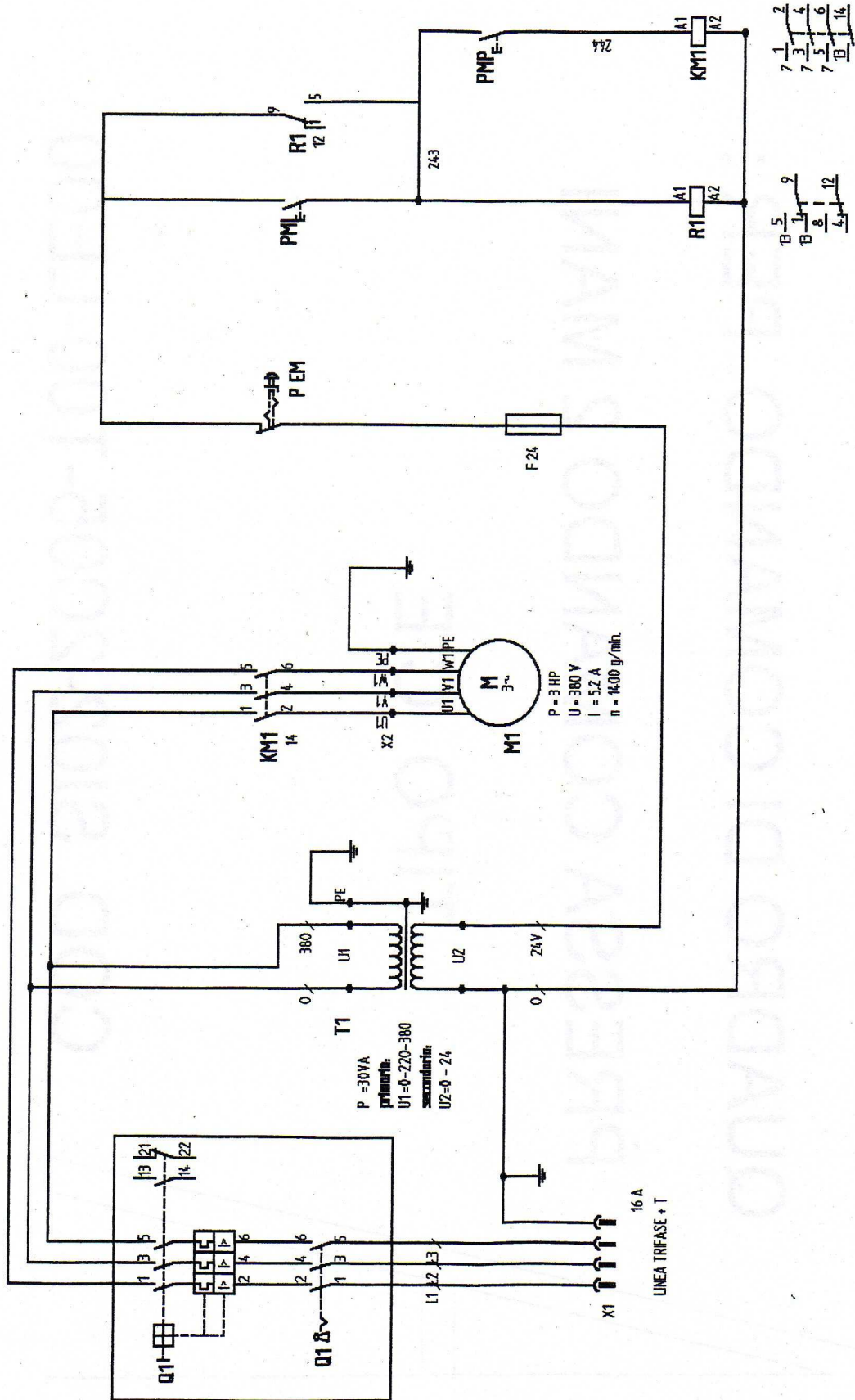


Item #	Part Name	Part # 40 Ton	Part# 70 Ton	Part#100 Ton	Part # 150 Ton	Qty
1	Complete power unit	300633	300633	79937		1
1	Tank cover	301388	301388	301391		1
2	Electrical cover	300388	300388	300388		1
3	Fill cap	302055	302055	302055		1
4	Air filter	300391	300635	300224		1
5	Drain filter	300392	300392	300223		1
6						
7	Back motor bearing					1
*8	Motor rotor	301848	301848			1
*9	Driving shaft					1
8 9 11	Drive shaft assembly	302200	302200			
10	Front motor bearing					1
*11	Pump motor	302200	302200			1
12	Blade	302056	302056			1
13	Pumping bearing					1
14	Eccentric					1
15	Roller bearing					1
16	High pressure pump group	301115	301115	301115		2
N/A	Outlet filter / bottom of pump	300393	300393	300394		1
N/A	Motor windings w/ shell	301848	301848			1

# Hydraulic diagram



# Electrical schematic







DURA PRESS

**Gauge Conversion  
Force 40**

**Bore 120 mm = 4.73 =**

<b>40 Tons</b>	<b>=</b>	<b>314 Bar</b>	<b>=</b>	<b>4555 PSI</b>
<b>35 Tons</b>	<b>=</b>	<b>275 Bar</b>	<b>=</b>	<b>3986 PSI</b>
<b>30 Tons</b>	<b>=</b>	<b>235 Bar</b>	<b>=</b>	<b>3416 PSI</b>
<b>25 Tons</b>	<b>=</b>	<b>196 Bar</b>	<b>=</b>	<b>2847 PSI</b>
<b>20 Tons</b>	<b>=</b>	<b>157 Bar</b>	<b>=</b>	<b>2277 PSI</b>
<b>15 Tons</b>	<b>=</b>	<b>117 Bar</b>	<b>=</b>	<b>1708PSI</b>
<b>10 Tons</b>	<b>=</b>	<b>78 Bar</b>	<b>=</b>	<b>1138 PSI</b>
<b>5 Tons</b>	<b>=</b>	<b>39 Bar</b>	<b>=</b>	<b>569 PSI</b>
<b>1 Ton</b>	<b>=</b>	<b>7.8 Bar</b>	<b>=</b>	<b>114 PSI</b>



# DURA PRESS

## Gauge Conversion Force 70

Bore 160 mm = 6.299

<b>70 Tons</b>	<b>=</b>	<b>299 Bar</b>	<b>=</b>	<b>4493 PSI</b>
<b>65 Tons</b>	<b>=</b>	<b>278 Bar</b>	<b>=</b>	<b>4172 PSI</b>
<b>60 Tons</b>	<b>=</b>	<b>256 Bar</b>	<b>=</b>	<b>3851 PSI</b>
<b>55 Tons</b>	<b>=</b>	<b>235 Bar</b>	<b>=</b>	<b>3530 PSI</b>
<b>50 Tons</b>	<b>=</b>	<b>214Bar</b>	<b>=</b>	<b>3209 PSI</b>
<b>45 Tons</b>	<b>=</b>	<b>192 Bar</b>	<b>=</b>	<b>2888 PSI</b>
<b>40 Tons</b>	<b>=</b>	<b>171 Bar</b>	<b>=</b>	<b>2567 PSI</b>
<b>35 Tons</b>	<b>=</b>	<b>150 Bar</b>	<b>=</b>	<b>2246 PSI</b>
<b>30 Tons</b>	<b>=</b>	<b>128 Bar</b>	<b>=</b>	<b>1925 PSI</b>
<b>25 Tons</b>	<b>=</b>	<b>110 Bar</b>	<b>=</b>	<b>1605 PSI</b>
<b>20 Tons</b>	<b>=</b>	<b>88 Bar</b>	<b>=</b>	<b>1284 PSI</b>
<b>15 Tons</b>	<b>=</b>	<b>66 Bar</b>	<b>=</b>	<b>963 PSI</b>
<b>10 Tons</b>	<b>=</b>	<b>44 Bar</b>	<b>=</b>	<b>642 PSI</b>
<b>5 Tons</b>	<b>=</b>	<b>22 Bar</b>	<b>=</b>	<b>321 PSI</b>
<b>1 Ton</b>	<b>=</b>	<b>4.4 Bar</b>	<b>=</b>	<b>64 PSI</b>



## DURA PRESS

### Gauge Conversion Force 100

Bore 180 mm = 7.086 =

<b>100 Tons</b>	<b>=</b>	<b>350 Bar</b>	<b>=</b>	<b>5074 PSI</b>
<b>95 Tons</b>	<b>=</b>	<b>332 Bar</b>	<b>=</b>	<b>4820 PSI</b>
<b>90 Tons</b>	<b>=</b>	<b>315 Bar</b>	<b>=</b>	<b>4566 PSI</b>
<b>85 Tons</b>	<b>=</b>	<b>297 Bar</b>	<b>=</b>	<b>4312 PSI</b>
<b>80 Tons</b>	<b>=</b>	<b>280 Bar</b>	<b>=</b>	<b>4058 PSI</b>
<b>75 Tons</b>	<b>=</b>	<b>262 Bar</b>	<b>=</b>	<b>3805 PSI</b>
<b>70 Tons</b>	<b>=</b>	<b>245 Bar</b>	<b>=</b>	<b>3551 PSI</b>
<b>65 Tons</b>	<b>=</b>	<b>227 Bar</b>	<b>=</b>	<b>3298 PSI</b>
<b>60 Tons</b>	<b>=</b>	<b>210 Bar</b>	<b>=</b>	<b>3044 PSI</b>
<b>55 Tons</b>	<b>=</b>	<b>192 Bar</b>	<b>=</b>	<b>2790 PSI</b>
<b>50 Tons</b>	<b>=</b>	<b>175 Bar</b>	<b>=</b>	<b>2536 PSI</b>
<b>45 Tons</b>	<b>=</b>	<b>157 Bar</b>	<b>=</b>	<b>2283 PSI</b>
<b>40 Tons</b>	<b>=</b>	<b>135 Bar</b>	<b>=</b>	<b>2028 PSI</b>
<b>35 Tons</b>	<b>=</b>	<b>122 Bar</b>	<b>=</b>	<b>1775 PSI</b>
<b>30 Tons</b>	<b>=</b>	<b>105 Bar</b>	<b>=</b>	<b>1522 PSI</b>
<b>25 Tons</b>	<b>=</b>	<b>87 Bar</b>	<b>=</b>	<b>1268 PSI</b>
<b>20 Tons</b>	<b>=</b>	<b>70 Bar</b>	<b>=</b>	<b>1014 PSI</b>
<b>15 Tons</b>	<b>=</b>	<b>52 Bar</b>	<b>=</b>	<b>761 PSI</b>
<b>10 Tons</b>	<b>=</b>	<b>35 Bar</b>	<b>=</b>	<b>507 PSI</b>
<b>5 Tons</b>	<b>=</b>	<b>17 Bar</b>	<b>=</b>	<b>253 PSI</b>
<b>1 Ton</b>	<b>=</b>	<b>3.4 Bar</b>	<b>=</b>	<b>50 PSI</b>