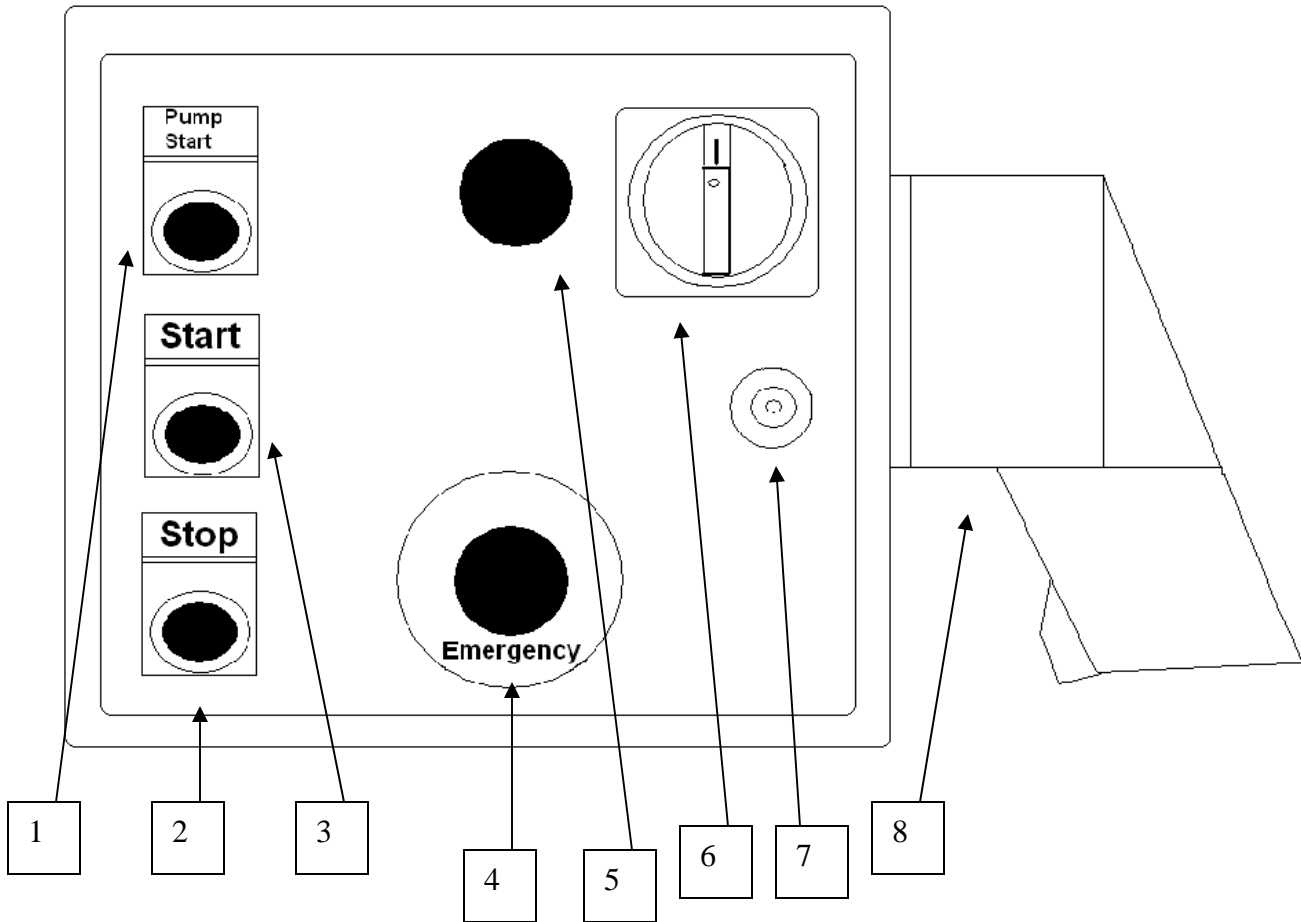
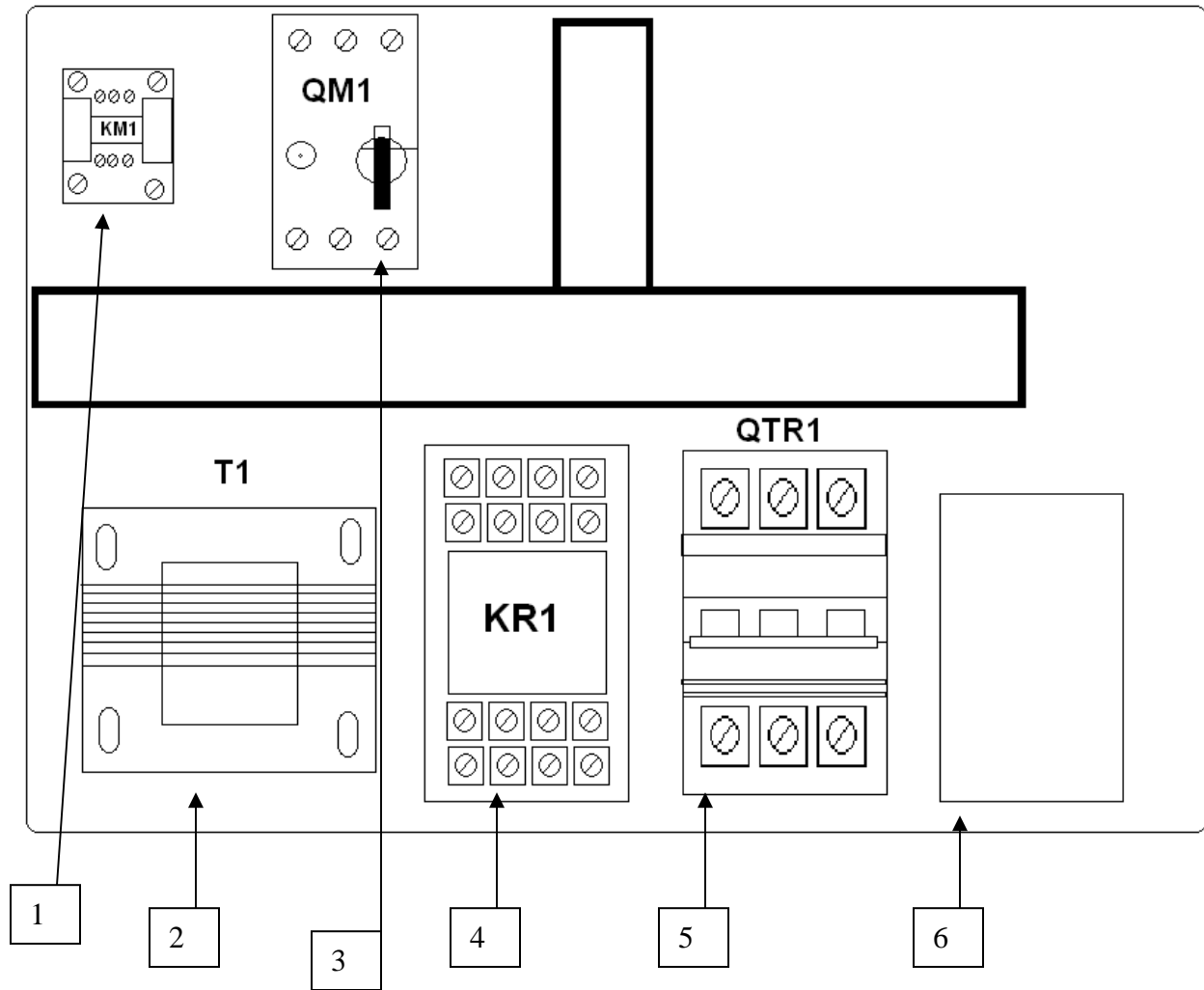


Electrical box Parts breakdown



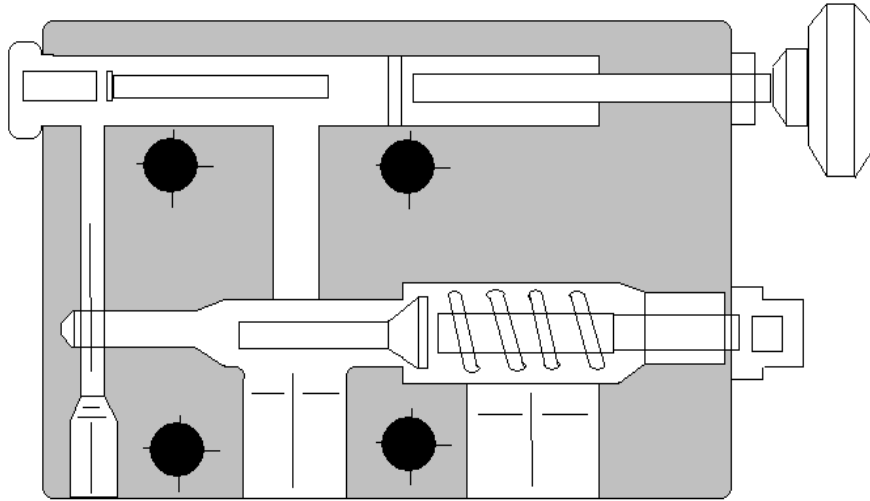
Item #	Part Name	Part number	Qty.
1	Pump Start button	716542	1
2	Stop button	716539	1
3	Start button	716556	1
4	Emergency button	716538	1
5	Power light	300298	1
6	Main power switch	302169	1
7	Elect. Box lock	300628	1
7A	Door key	80511	
8	Female plug		1
N/A	Male plug	301547	1
N/A	Electrical box w/ all components	300387	1
N/A	Electrical box w/ no components	300389	1
N/A	Power Switch Shaft	302729	

Electrical box components parts



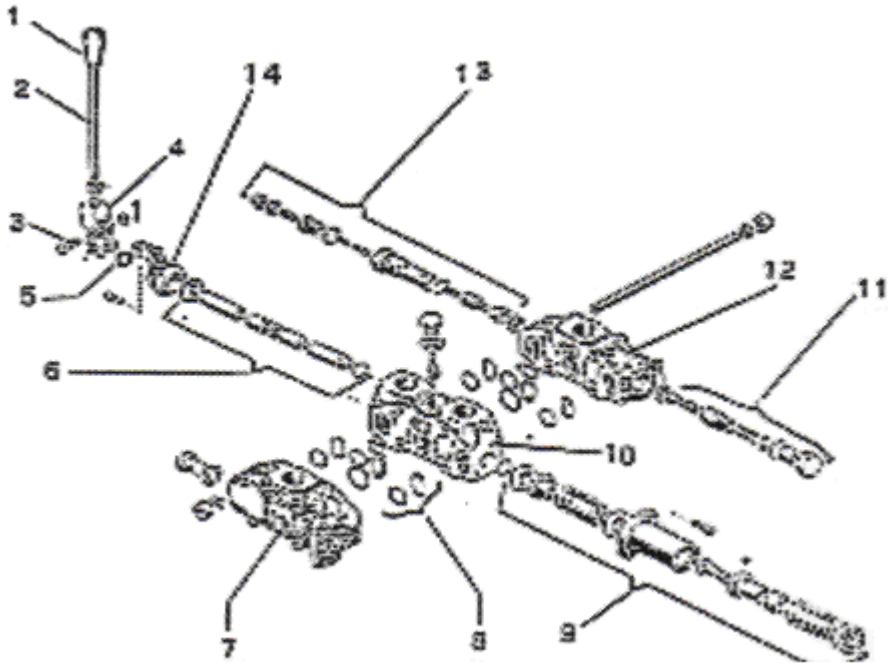
Item #	Part Name	40 Ton	70 Ton	100 Ton	150 Ton	Qty
1	Contactor					1
2	Transformer	300842	300842	300842		1
3	Overload 220 volt	302187	302187	302187		1
3	Overload 440 volt	302189	302189	302188		1
3A	N.O. contact block	302192	302192	302192		1
4	Relay	72300000	72300000	72300000		1
5	Fuse block	300843	300843	300843		1
5B	Fuse 2 amp	77523	77523	77523		3
6	Terminal block ground					2
6A	Terminal block black					3
	On-Off Switch Body	302728	302728	302728		1

2.6 Exchange valve



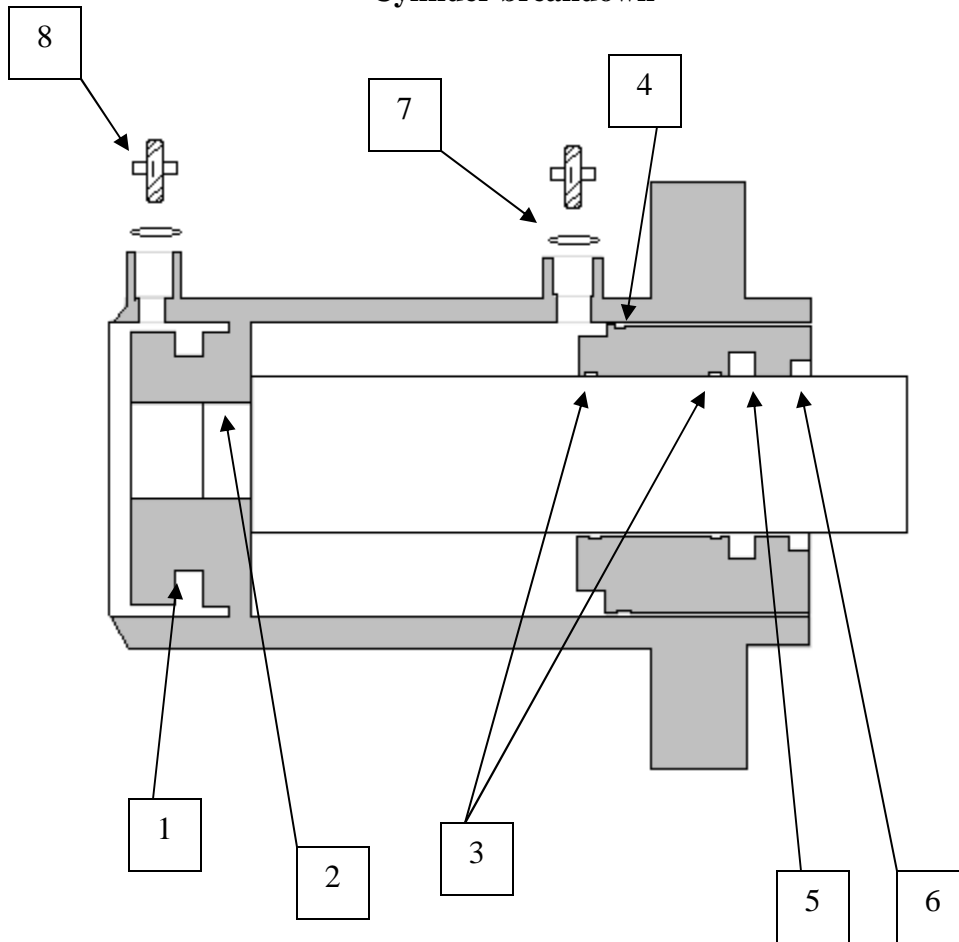
Item #	Part Name	Part # 40 Ton	Part # 70 Ton	Part # 100 Ton	Part # 150 Ton	Qty
1	Complete relief valve	300178	300178	300178		1
N/A	O-ring kit spring washer					1
N/A	Valve handle	301393	301393	301393		1

2.5 Distributor section



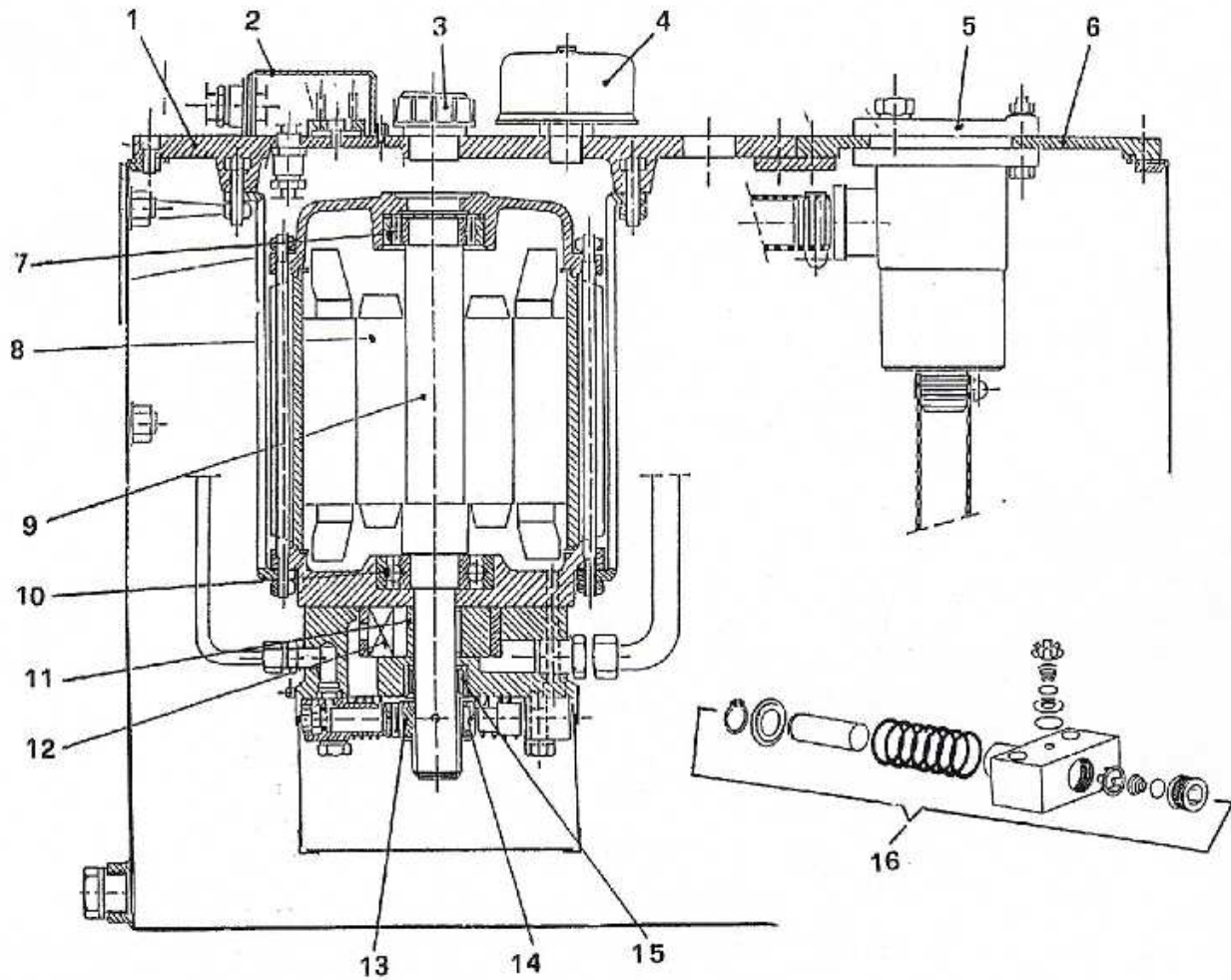
Item #	Part Name	Part number	Qty
N/A	Complete valve assembly	300179	1
1, 2, 3, 4, 5	Knob lever pin fork powder scraper	302211	1
6, 9, 10	Shaft group cap group main body	302210	1
Not shown	Relief valve	300852	1
7	Cover Body	302209	1
8	Gasket Set	300886	1
11, 12, 13	Back valve body entry collector body max valve	302208	1
1 & 2	Lever and knob only	302341	1

Cylinder breakdown



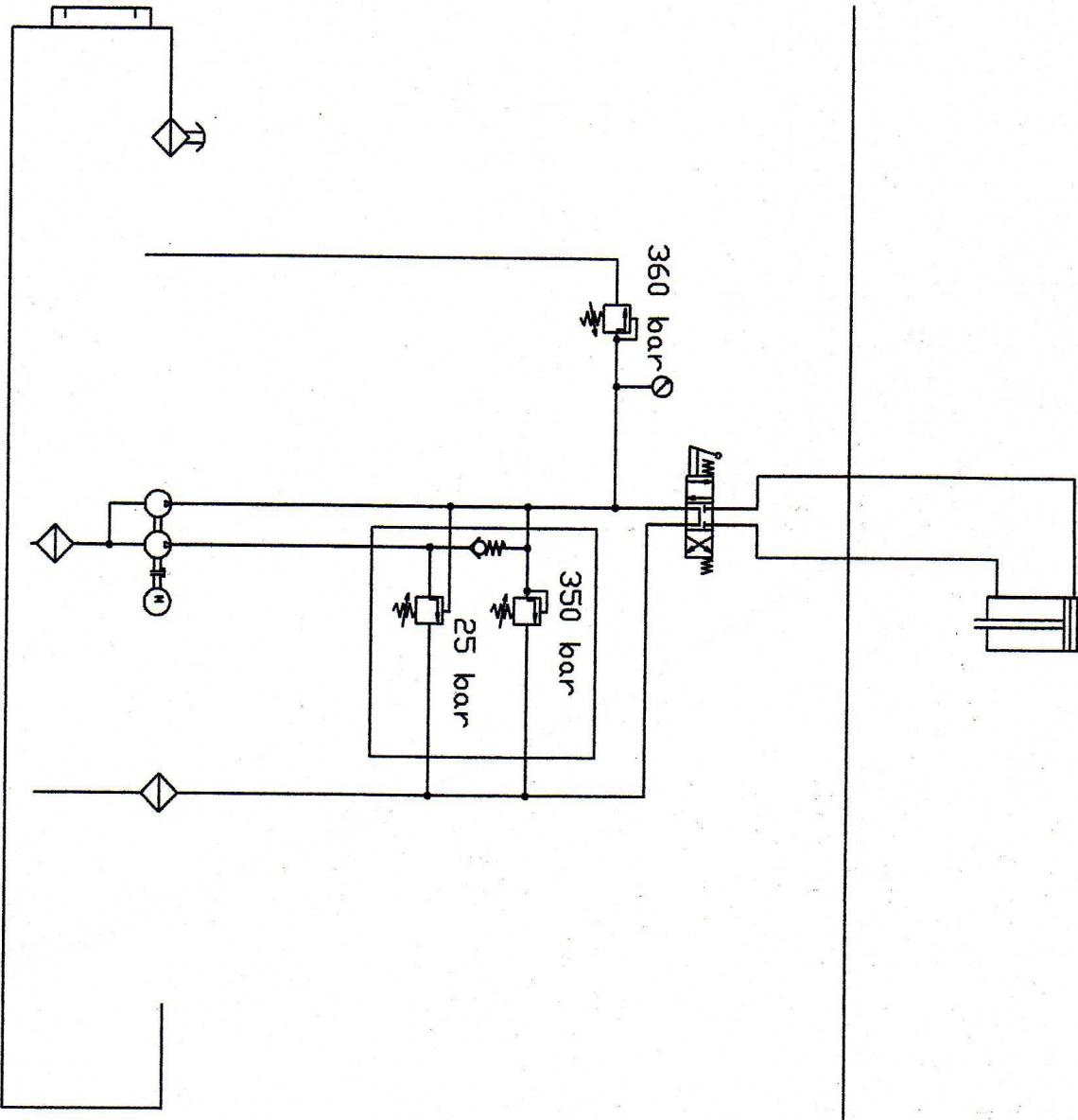
Item #	Part Name	Part# 40 Ton	Part# 70 Ton	Part# 100 Ton	Part# 150 Ton	Qty
1	Piston Gasket	300609	301195	301189		1
2	Piston O-ring	300610	301196	301186		1
3	Head guide rings	300647	301197	301187		1
4	Head o-ring	300648	301198	301188		1
5	Head gasket	300649	301199	301185		1
6	Head scraper	300650	301200	301184		1
N/A	Repair kit	716791	716790	716789		
7	Washer	Washer comes with fitting				2
8	Hose fitting top	300890	300890	300890		2
8A	Hose fitting bottom	301390	301390	301390		2
	Complete cylinder	300698	300642	SS100C00		1
Not shown	Gauge	300359	300360	300359		1
Not shown	Hydraulic hose B port	300382	300382			1
Not shown	Hydraulic hose A port	300383	300383			1
Not shown	Eye bolt	301880	301880	301880		1
Not shown	Nose piece bolt	300793	300793	300793		1

2.4 Hydraulic pumping unit

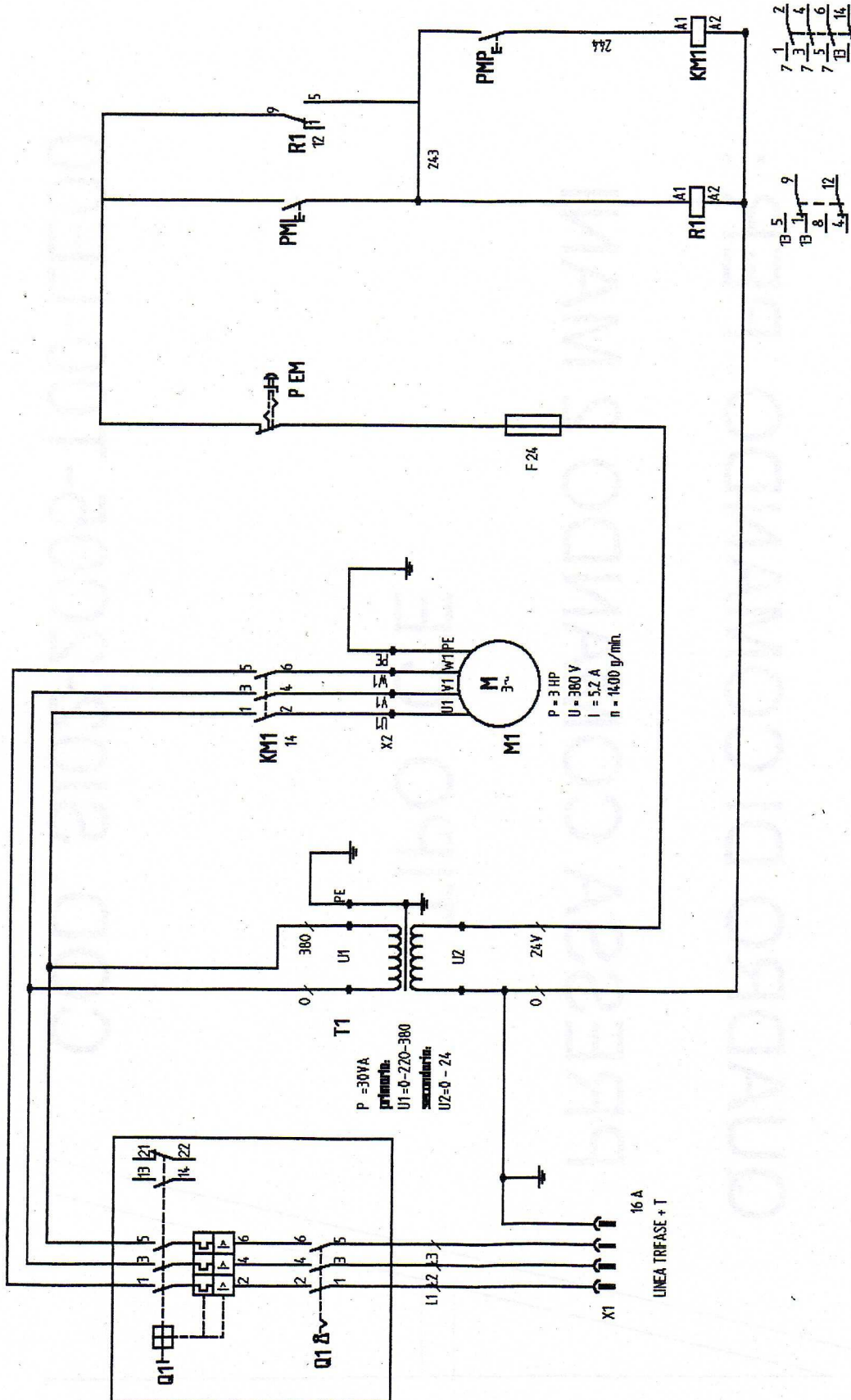


Item #	Part Name	Part # 40 Ton	Part# 70 Ton	Part#100 Ton	Part # 150 Ton	Qty
1	Complete power unit	300633	300633	79937		1
1	Tank cover	301388	301388	301391		1
2	Electrical cover	300388	300388	300388		1
3	Fill cap	302055	302055	302055		1
4	Air filter	300391	300391	300224		1
5	Drain filter	300392	300392	300223		1
6						
7	Back motor bearing					1
*8	Motor rotor	301848	301848			1
*9	Driving shaft					1
8 9 11	Drive shaft assembly	302200	302200			
10	Front motor bearing					1
*11	Pump motor	302200	302200			1
12	Blade	302056	302056			1
13	Pumping bearing					1
14	Eccentric					1
15	Roller bearing					1
16	High pressure pump group	301115	301115	301115		2
N/A	Outlet filter / bottom of pump	300393	300393	300394		1
N/A	Motor windings w/ shell	301848	301848			1

Hydraulic diagram



Electrical schematic





DURA PRESS

**Gauge Conversion
Force 40**

Bore 120 mm = 4.73 =

40 Tons	=	314 Bar	=	4555 PSI
35 Tons	=	275 Bar	=	3986 PSI
30 Tons	=	235 Bar	=	3416 PSI
25 Tons	=	196 Bar	=	2847 PSI
20 Tons	=	157 Bar	=	2277 PSI
15 Tons	=	117 Bar	=	1708PSI
10 Tons	=	78 Bar	=	1138 PSI
5 Tons	=	39 Bar	=	569 PSI
1 Ton	=	7.8 Bar	=	114 PSI



DURA PRESS

Gauge Conversion Force 70

Bore 160 mm = 6.299

70 Tons	=	299 Bar	=	4493 PSI
65 Tons	=	278 Bar	=	4172 PSI
60 Tons	=	256 Bar	=	3851 PSI
55 Tons	=	235 Bar	=	3530 PSI
50 Tons	=	214Bar	=	3209 PSI
45 Tons	=	192 Bar	=	2888 PSI
40 Tons	=	171 Bar	=	2567 PSI
35 Tons	=	150 Bar	=	2246 PSI
30 Tons	=	128 Bar	=	1925 PSI
25 Tons	=	110 Bar	=	1605 PSI
20 Tons	=	88 Bar	=	1284 PSI
15 Tons	=	66 Bar	=	963 PSI
10 Tons	=	44 Bar	=	642 PSI
5 Tons	=	22 Bar	=	321 PSI
1 Ton	=	4.4 Bar	=	64 PSI



DURA PRESS

Gauge Conversion Force 100

Bore 180 mm = 7.086 =

100 Tons	=	350 Bar	=	5074 PSI
95 Tons	=	332 Bar	=	4820 PSI
90 Tons	=	315 Bar	=	4566 PSI
85 Tons	=	297 Bar	=	4312 PSI
80 Tons	=	280 Bar	=	4058 PSI
75 Tons	=	262 Bar	=	3805 PSI
70 Tons	=	245 Bar	=	3551 PSI
65 Tons	=	227 Bar	=	3298 PSI
60 Tons	=	210 Bar	=	3044 PSI
55 Tons	=	192 Bar	=	2790 PSI
50 Tons	=	175 Bar	=	2536 PSI
45 Tons	=	157 Bar	=	2283 PSI
40 Tons	=	135 Bar	=	2028 PSI
35 Tons	=	122 Bar	=	1775 PSI
30 Tons	=	105 Bar	=	1522 PSI
25 Tons	=	87 Bar	=	1268 PSI
20 Tons	=	70 Bar	=	1014 PSI
15 Tons	=	52 Bar	=	761 PSI
10 Tons	=	35 Bar	=	507 PSI
5 Tons	=	17 Bar	=	253 PSI
1 Ton	=	3.4 Bar	=	50 PSI