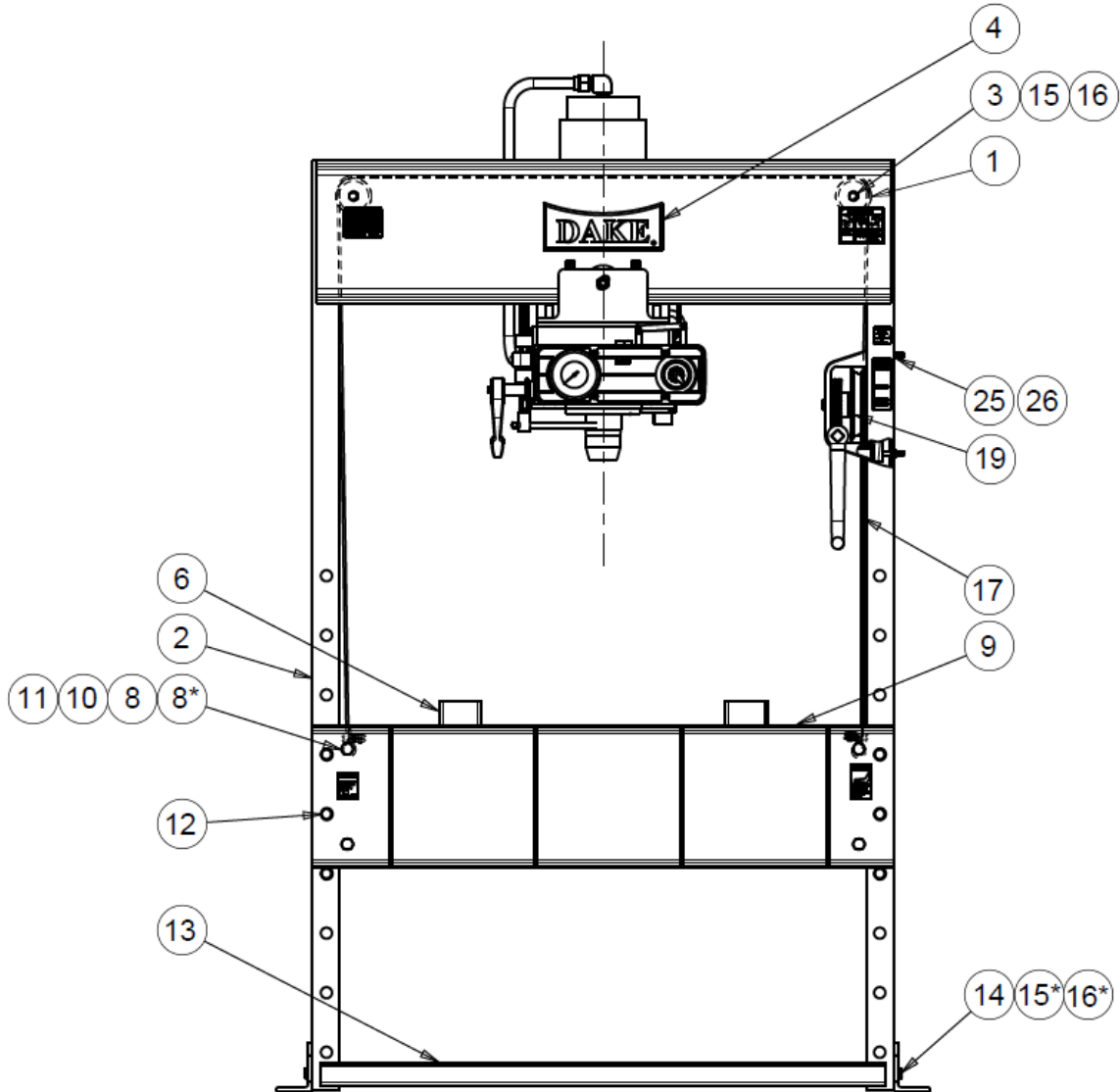
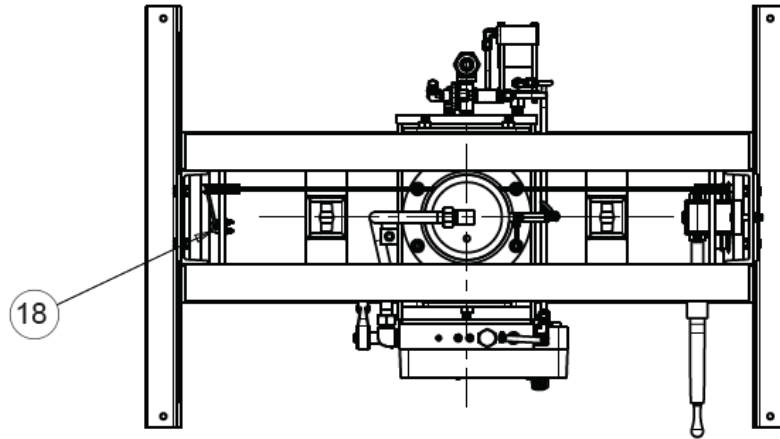


EXPLODED VIEW & PARTS LIST

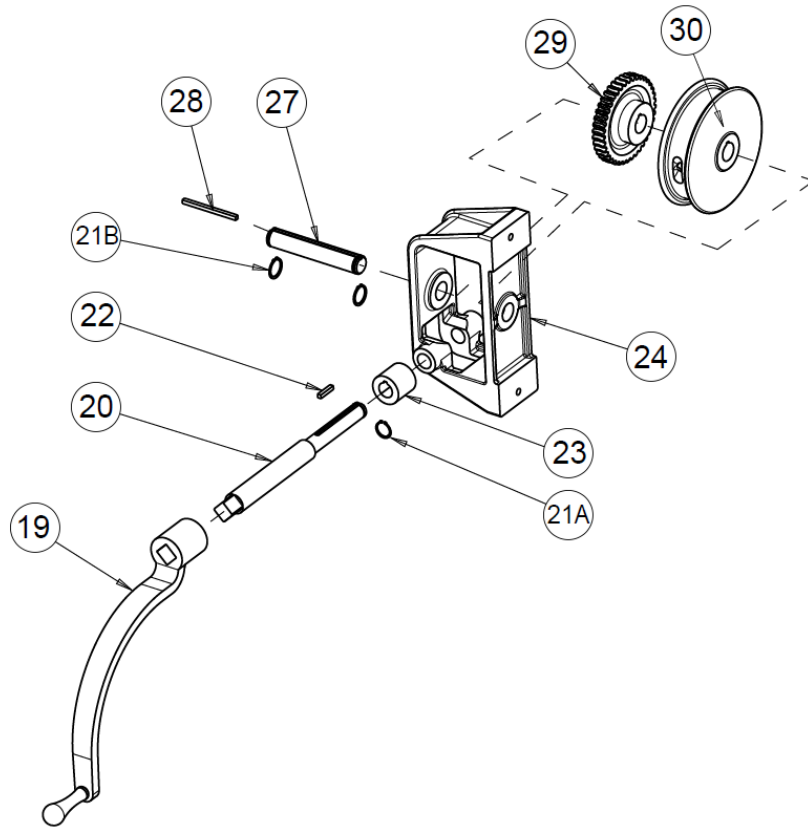
FRAME ASSEMBLY



Different tonnage pictured, may be slight differences

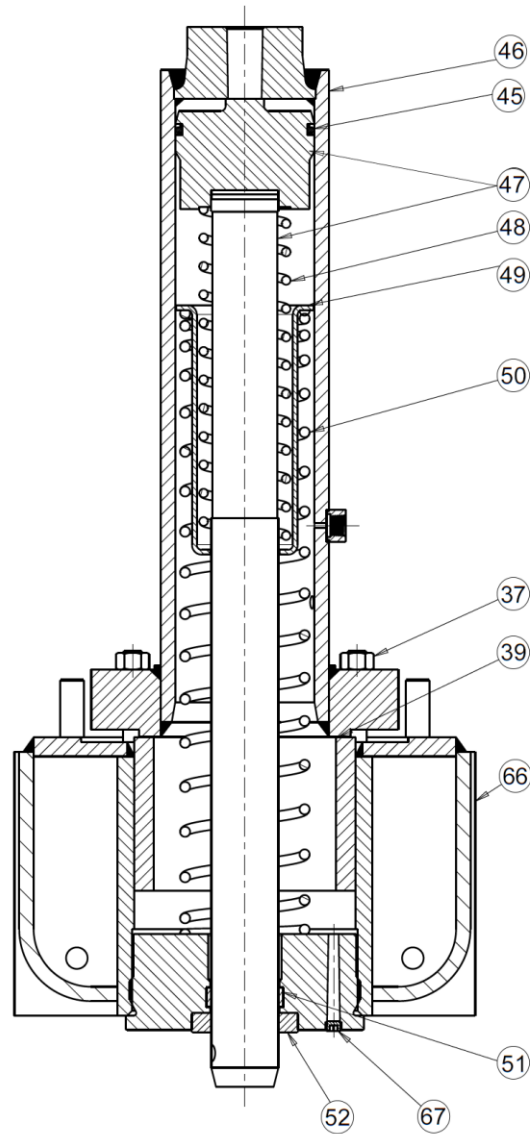
<u>Item</u>	<u>Part Description</u>	<u>Part No.</u>	<u>Qty</u>
1	Pulley	602-25H	2
2	Frame	700134	1
2*	Spacer	997	2
3	Hex Cap Screw	43341 (3/8"-16 x 6")	2
4	Name Plate	81002	1
6	Table Plate	966	1
8	Table Spacer Assembly	716691	4
8*	Hex Cap Screw	79982 (1/2"-13 x 6-1/2")	4
9	Table Channel	701020P	2
10	Lock Washer	43647 (1/2")	2
11	Hex Nut	43916 (1/2"-13)	2
12	Table Pin	981	4
13	Base Angle	978P	2
14	Hex Head Bolt	43349 (1/2"-13 x 1-1/2")	4
15	Lock Washer	43633 (3/8")	2
15*	Lock Washer	43647 (1/2")	4
16	Hex Nut	43917 (3/8"-11)	2
16*	Hex Nut	43916 (1/2"-13)	4
17	Cable	988 (Ø 3/16")	1
18	Cable Clamps	991	4
19	Table Hoist Assembly	701677-S	1
25	Hex Cap Screw	43335 (3/8-16 x 2-3/4")	2
26	Hex Nut	43912 (3/8"-16)	2
	Workhead Assembly Single Pump	906226-S	
	Workhead Assembly Double Pump	906426-S	

TABLE HOIST ASSEMBLY 701677-S

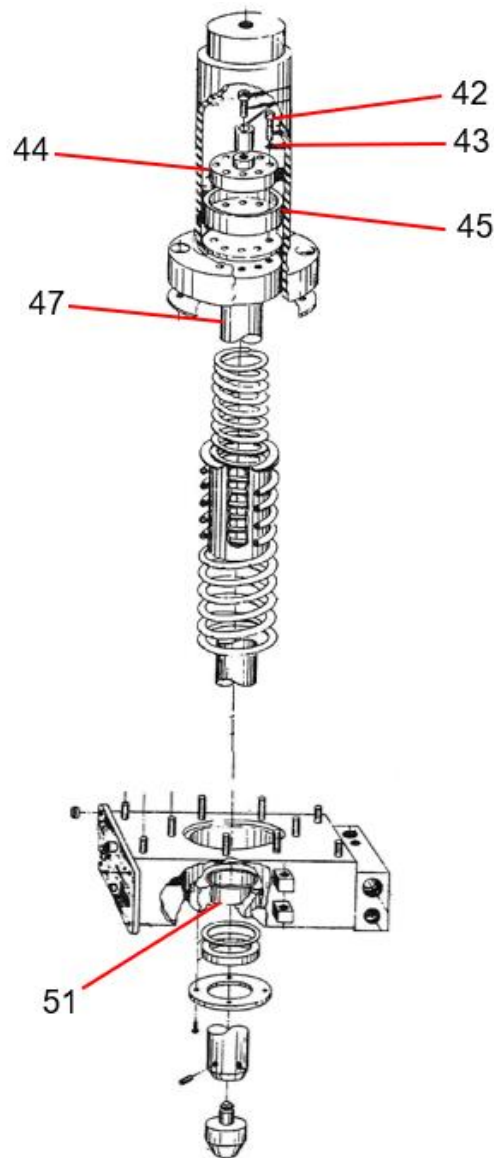


<u>Item</u>	<u>Part Description</u>	<u>Part No.</u>	<u>Qty</u>
19	Hoist Crank Assembly	701653A	1
20	Worm Shaft	7530	1
21A	Retaining Ring	43978	2
21B	Retaining Ring	27437	2
22	Worm Key	47364	1
23	Worm	385	1
24	Hoist Frame	725	1
27	Drum Shaft	724P	1
28	Drum Key	737	1
29	Worm Gear	736	1
30	Cable Drum	723	1

POWER UNIT ASSEMBLY

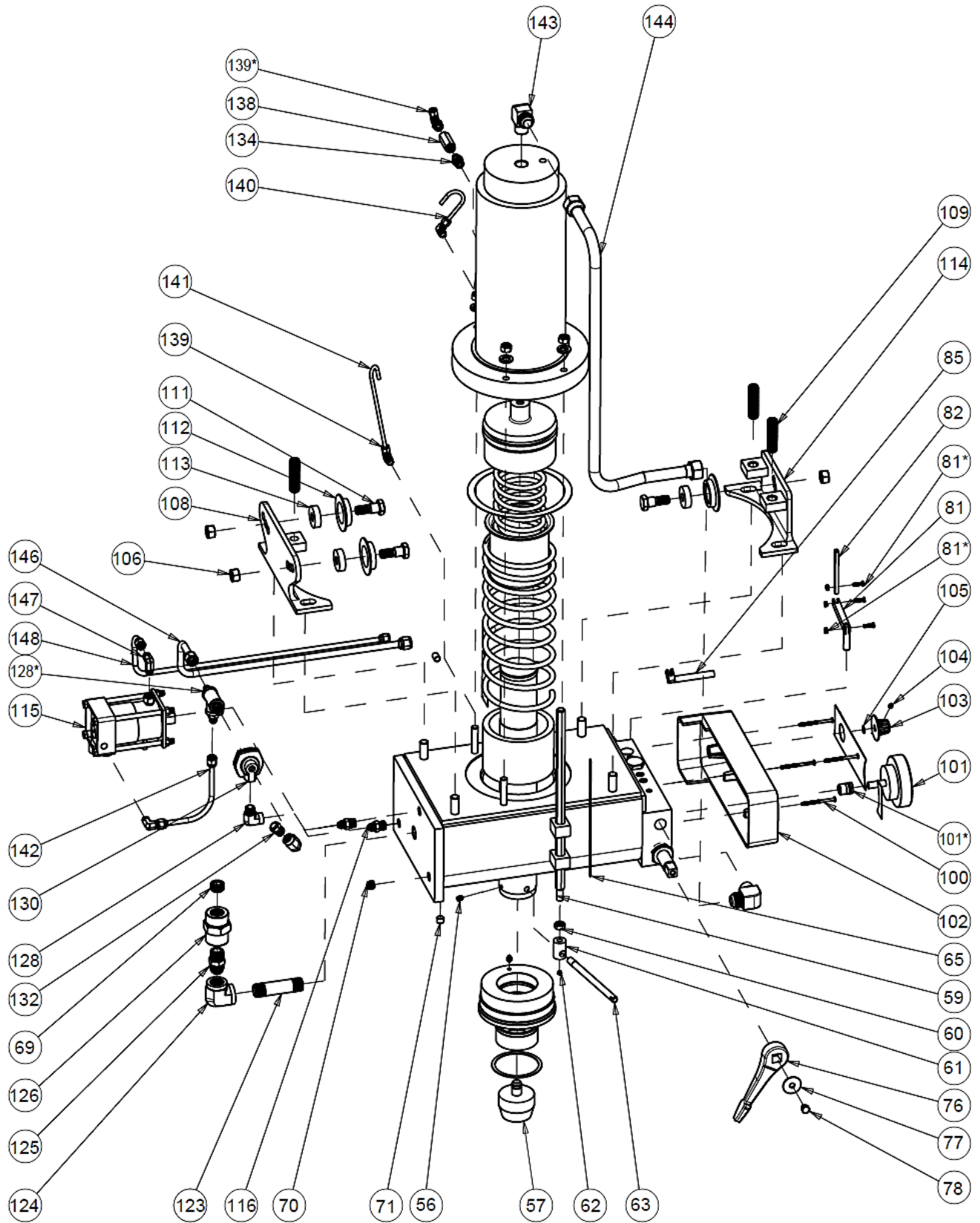


<u>Item</u>	<u>Part Description</u>	<u>Part No.</u>	<u>Qty</u>
37	Hex Nut (1/2"-13)	43916	4
39	Cylinder Gasket	9776	1
45	T-Ring Seal	17976	1
46	Cylinder	7361	1
47	Piston Assembly - Serial No. > 192522	716225	1
48	Ram Spring (Small)	5722	1
49	Spring Spacer	5725	1
50	Ram Spring (Large)	5721	1
51	Wear Ring - Serial No. > 192522	76805	1
52	Oil Seal	6019	1
55	Self-Tapping Screw (#10-24 x 3/8")	43881	4
66	Reservoir Assembly	715266	1
67	Pipe Plug	589	1
-	Cylinder Repair Kit (Items 39, 45, 52, 53, 72, 74, 89, 93, & 97)	713053	-



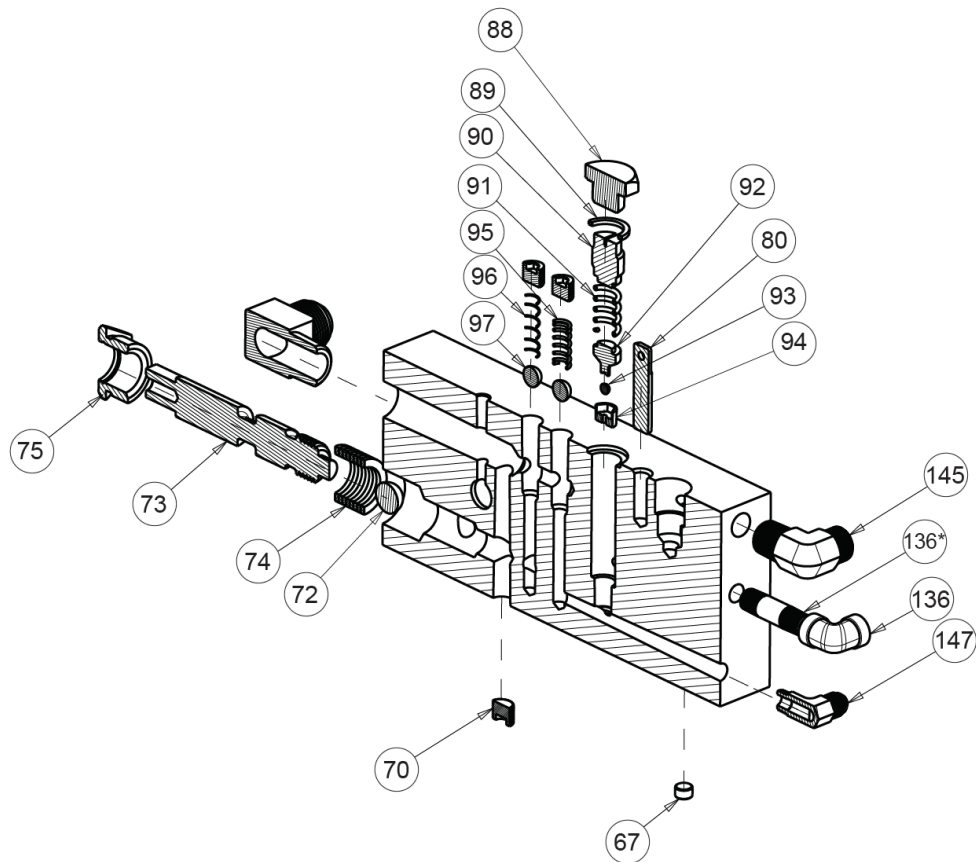
* For presses with serial numbers lower than 192522 or made before 1992 refer to this exploded view and parts list for accurate part information. All other parts that are not listed below are the same for all the 25-ton Air Presses and can be found in this manual. *

<u>Item</u>	<u>Part Description</u>	<u>Part No.</u>	<u>Qty</u>
42	Hex Cap Screw (1/4"-20 x 1")	43305	4
43	Lock Washer (1/4")	43643	4
44	Supporting Ring	967	1
45	Leather Cup	969	1
47	Piston Assembly	701401	1
51	Piston Bushing	5731	1



<u>Item</u>	<u>Part Description</u>	<u>Part No.</u>	<u>Qty</u>
56	Set Screw (5/16")	43575	1
57	Nose Piece	701706	1
58	V-Nose Piece (Not Shown)	701710	1
59	Stroke Indicator Rod	2260	1
60	Hex Jam Nut (1/2"-13)	43940	1
61	Stroke Indicator Special Nut	2259	1
62	Socket Cap Screw (1/4"-20 x 1/4")	43558	1
63	Stroke Indicator Support Stud	2258	1
64	Drive Screw for Scale	43616	3
65	Stroke Indicator Scale	2261	1
69	Pipe Plug (3/4" NPTF)	1745	1
70	Pipe Plug (3/8" NPTF)	588	4
71	Pipe Plug (1/4" NPTF)	5167	1
76	Release Valve Handle	2230A	1
77	Spindle Washer (1-1/2" OD x .4" ID x 1/16")	348	1
78	Hex Cap Screw (3/8"-16 x 3/4")	43326	1
81	Air Control Arm	6153	1
81*	Slotted Screw (#10-24 x 3/4")	43849	3
81*	Locknut (#10-24)	44350	1
82	Air Control Link	6154	1
85	Air Control Shaft	6156	1
100	Machine Screw (#10-24 x 2-3/4")	300248	4
101	Gauge	71270	1
101*	Special Gauge Bushing	81384	
102	Control Panel	80743	1
-	Control Panel Decal	6446	1
103	Control Knob	2250A	1
104	Socket Head Screw (1/4"-20 x 1/2")	43562	1
105	Base Angle Washer (1/2")	43634	1
106	Hex Nut (Heavy 5/8"-11)	43917	7
108	Rear Roller Bracket	9472	1
109	Set Screw (3/4"-10 x 3")	43616	3
111	Roller Screw	1297P	3
112	Flanged Roller	2244P	3
113	Ball Bearing	6023	3
114	Front Roller Bracket	9473	1
115	Air Driven Pump	63453	1
116	Pipe Fitting (3/8")	58226	4
123	Pipe Nipple (3/4" x 4")	1818	1
124	Pipe Elbow (3/4")	74017	1
125	Pipe Nipple (3/4" x 2")	58227	1
126	Pipe Coupling (3/4")	302273	1
128	Street Elbow (3/8")	1264	2
128*	Pipe Tee	1333	1
130	Quick Exhaust	1911	1
132	Breather Vent	7368	1
134	Pipe Bushing (1/4" x 1/8")	1100	1
138	Check Valve (1/4" NPT)	1841	1
139	Tube Fitting (1/4" x 1/8" NPTF)	19576	3
139*	Pipe Reducer Bushing	1102	1
140	Air Vent	632	1
141	Tubing	7680	1
142	Tube Assembly includes 139	7684	1
143	Tube Elbow (7/8" x 3/4" NPTF)	1944	2
144	Tube Assembly	701719	1
146	Tube Assembly	701723	1
147	Tube Elbow (3/8" x 1/4" NPTF)	1248	3
148	Tube Assembly (3/8")	701725	1
-	Haskel Pump Repair Kit	713034	-

CONTROL BLOCK ASSEMBLY



<u>Item</u>	<u>Part Description</u>	<u>Part No.</u>	<u>Qty</u>
67	Pipe Plug (1/8")	589	1
70	Pipe Plug (3/8")	588	4
72	Ball Valve (Ø 3/4")	1936	1
73	Release Valve Rod	2257	1
74	Valve Packing Washer	1937	8
75	Valve Rod Packing Nut	1931	1
79	Plunger Unit (Not Shown)	6151	1
80	Pivot Pin	6152	1
88	Valve Cap Nut	2236	1
89	O-Ring	3965	1
90	Relief Valve Adjusting Screw	2237	1
91	Relief Valve Spring	893	1
92	Ball Retainer	892	1
93	Ball Valve (Ø 1/4")	918	1
94	Relief Valve Seat	891	1
95	Check Valve Spring	579	1
96	Check Valve Spring	890	1
97	Ball Valve (Ø 1/2")	586	2
136	Pipe Elbow	1099	1
136*	Pipe Nipple	44157	1
145	Tube Elbow	1252	1
147	Tube Elbow (3/8")	1248	3

Additional parts used with double pump presses not illustrated:

<u>Item</u>	<u>Part Description</u>	<u>Model 6-425</u>	<u>Qty</u>
115	Pump	63453	1
139	Tube Fitting	597	5
149	Tube Tee	1249	1
150	Tube Tee	7693	1
151	Tube Assembly	701727	1
152	Straight Fitting	1251	1
153	Tube Assembly	701729	1
154	Straight Fitting	1247	1
155	Tube Assembly	701730	1

Please contact factory for current prices.

ORDERING INFORMATION

Parts are available for direct purchase from Dake or through a distributor. When placing a parts order, you will need to provide the part number, name of part, and model number. All parts shipped F.O.B. Factory in Grand Haven, MI.